

# EVENTS GUIDEBOOK



QUINTA DA BELLA VISTA

*Sintra*







## ONCE UPON A TIME...

Nestled in the late 1860s, there existed a place of enchantment known as Quinta da Bella Vista.

**Sir Francis**, a man of grand ambitions, began acquiring vast stretches of land, gradually expanding his property to encompass fifteen Quintas, including the mesmerizing Quinta da Bella Vista.

Legends whispered that this architectural marvel had been erected to house Sir Francis Cook's secret love, **Lady Tennessee Celeste Claflin**, Viscountess of Montserrat. Lady Tennessee, a captivating queen of scandal from America, brought not only a scintillating burst of color but also revolutionary ideas that stirred the bewildered population of Sintra. In this process, she became the uncrowned queen of Monserrate, her presence forever etched in the annals of history.

As time wove its tapestry, the remarkable Quinta da

Bella Vista caught the attention of the illustrious **Sir Arthur Ignatius Conan Doyle**, the renowned British writer and creator of the famed detective, **Sherlock Holmes**. In 1890, Sir Arthur, accompanied by his beloved family, made Quinta da Bella Vista their cherished abode. **Annette**, Sir Arthur's sister, and his youngest son, **Adrian**, were drawn to the ethereal beauty of the estate, becoming almost permanent residents during the early 1950s.

Adrian possessed an irresistible charm that made him the desire of many a lady's heart. He was not only a respected hunter but also a talented author who continued his father's legacy by penning further adventures of Sherlock Holmes. Quinta da Bella Vista provided Adrian with the inspiration he sought, and atop the tower of the Palacio, bathed in the abundance of light from all directions, he could often be found capturing his thoughts on canvas as a skilled painter.

Quinta da Bella Vista became a **haven for**

**luminaries of the era**, a place where celebrities gathered to bask in its allure. Sir Francis Cook, the First Viscount of Monserrate and former owner of Palacio Monserrate and Quinta da Bella Vista, graced its halls, sharing anecdotes and wisdom. The South African poet **Roy Campbell** found solace within its ethereal embrace, while the American actress **Gloria Swanson** reveled in the serenity it provided. Even **Pierre Schlumberger**, a French oil tycoon and heir to immeasurable fortunes, found himself captivated by the mystique of Quinta da Bella Vista.

Through the years, the tradition continued, and the estate remained a beacon for those seeking respite from the bustling world.

The estate derived its name, "Bella Vista," from its superb southwest orientation. Bathed in a captivating warmth, the land witnessed the spectacle of the sun setting at the far ends of the Atlantic Ocean, casting a golden glow over its every

corner. Shielded by the Sintra hills, the estate found refuge from the fierce north-northeasterly winds and the tempestuous southerlies, embracing only the gentle caress of the westward breeze.

As dusk settles upon Quinta da Bella Vista, an air of magic envelopes the surroundings. The softly illuminated Palacio Monserrate, standing proudly in the foreground, adds a touch of ethereal splendor to the views that linger in the hearts and minds of those fortunate enough to witness them. Here, amidst the breathtaking landscapes and the echoes of a storied past, memories get etched into the fabric of time, destined to endure forever.

And so, the romantic tale of Quinta da Bella Vista continues to unfold, capturing the hearts of all who venture into its embrace. Love stories blossom, dreams are born, and the legacy of this enchanting place endures, whispering its secrets to those who listen closely, forever entwining their hearts in its spell...



QUINTA DA BELLA VISTA

*Sintra*

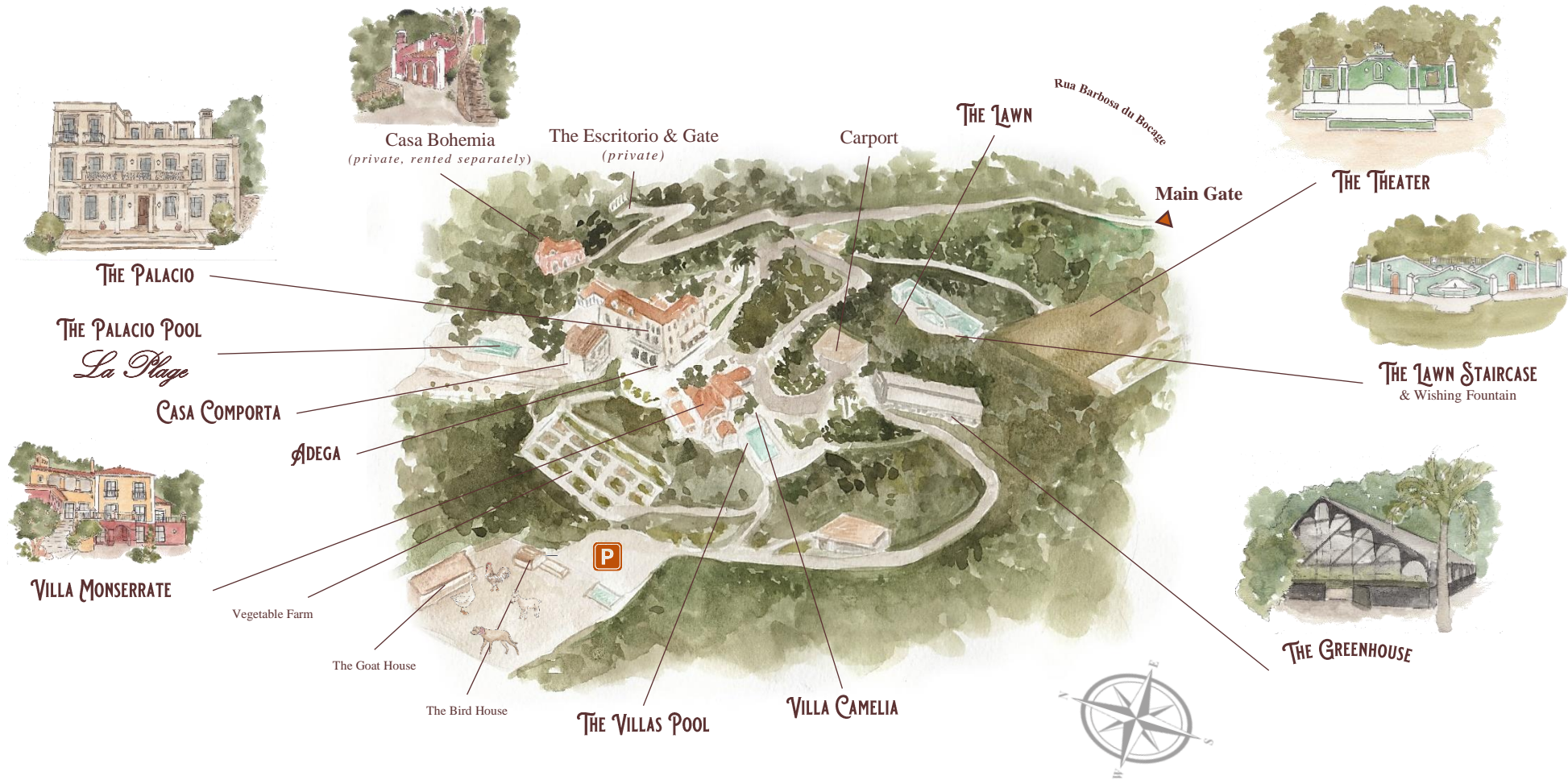
# Welcome!

Welcome to  
the former Estate of  
**Sir Arthur Conan Doyle,**  
and his son **Adrian.**



# QUINTA DA BELLA VISTA

*Sintra*



The Estate Grounds



The Palacio, Villa Camelia, Villa Monserrate, Casa Comporta, and Casa Bohemia can also be used as separate properties, with the possibility of using Casa Bohemia as a romantic “bungalow” experience. Casa Bohemia is not included in Estate rentals.

Quinta da Bella Vista features two swimming pools with underwater sound system, one regular size 11 x 5.50 m, and the heated Palacio Pool of 14 x 6 m, both of which are surrounded by very comfortable lounging areas with unhindered expanded ocean sunset views and with cozy fire pits and Adirondack chairs.

Our Lawn and Garden Theater, our 350 square meter Victorian Greenhouse, and our Adega in the Palacio can host special events of small groups of friends all the way up to 250 - 300 guests (and 450 guests for a performance at our Garden Theater). These events can be performances, weddings, birthday celebrations, corporate retreats, yoga sessions, outdoor movie nights, culinary experiences, New Year’s celebrations, and others.

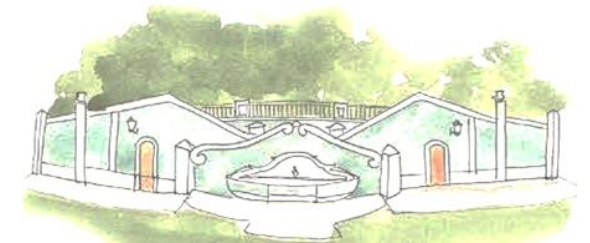
A total of fifteen well-equipped bedroom Suites and Residences can accommodate up to 36 lucky guests with amenities such as heated floors in the bathrooms, Sonos sound systems throughout, and high-speed internet, and security coverage.

Our Vegetable Garden and Animal Farm provide fresh milk, eggs, organic natural vegetables, and fruit.

Further, six well-equipped kitchens, three outdoor grill areas, and other possibilities to cater to events abound and will offer guests plentiful of gastronomic choices.



*The Palacio*



The Palacio offers a unique experience with four stunning bedroom Suites and a splendidly designed double volume Royal Suite and Grand Bathroom. Numerous lounges with their fireplaces including our coveted Cigar Lounge, the Palacio Kitchen with its al-fresco dining courtyard, and the Adega, our wine cellar tavern to host special dinner events, make the Palacio a one-of-a-kind experience.

Casa Comporta, the adjoining poolhouse, offers another two suites and a living room and open bar kitchen in a beachouse ambience.

Our secluded Palacio Pool and Bar and our “*La Plage*”, our own beach with imported sand, all bathed in ocean and sunset views, and complete with a gas firepit surrounded by Adirondack teak chairs, call for magnificently leisurely days and enjoyable evenings.



QUINTA DA BELLA VISTA

*Antora*







QUINTA DA BELLA VISTA

*Sintra*

## A Magical Location

The Sintra Hills (Portuguese: Serra De Sintra), is a mountain range in western Portugal. Its highest point at 529 meters [1736 ft.] is near the enchanting UNESCO world-heritage village of Sintra. The range covers about 16 km (10 miles) from the resort town of Sintra to Cabo da Roca (Cape Roca) on the Atlantic Ocean. It was known in the ancient world as Lunae Mons (mountains of the Moon) and was the legendary retreat of Diana the Huntress (known as Cynthia to the Romans, hence “Çintra”).







QUINTA DA BELLA VISTA

*Sintra*



Set on Rua Barbosa du Bocage, the old road of Sintra that links most of the palaces, your guests will pass in front of some of the most noteworthy sites of Sintra, such as the Sintra National Palace, and the Quinta da Regaleira, and the Palacio Seteais, as they weave their way through to the Palace of Monserrate.

Possibly the oldest Eucalyptus tree in Sintra is gracing our Quinta's gate, the start of a 250-metre-long cobblestone driveway.





QUINTA DA BELLA VISTA

*Sintra*

## The Light & The Views

A superb south-west orientation gives our Quinta the name “Bella Vista.” A captivating warm light bathes our land while you watch the sun set in the far ends of the Atlantic Ocean.

Creating memories that will last forever, the views in the evenings are enhanced by the nicely illuminated Palacio Monserrate in the foreground.







QUINTA DA BELLA VISTA

*Sintra*

## The Lush Nature

Our Quinta has been privileged to have some very rare trees and plants that grow in the special microclimate of Sintra. These include a number of Monkey Puzzle trees (native to Chile and Argentina only), Sequoias, and many colorful tropical flowers.





QUINTA DA BELLA VISTA

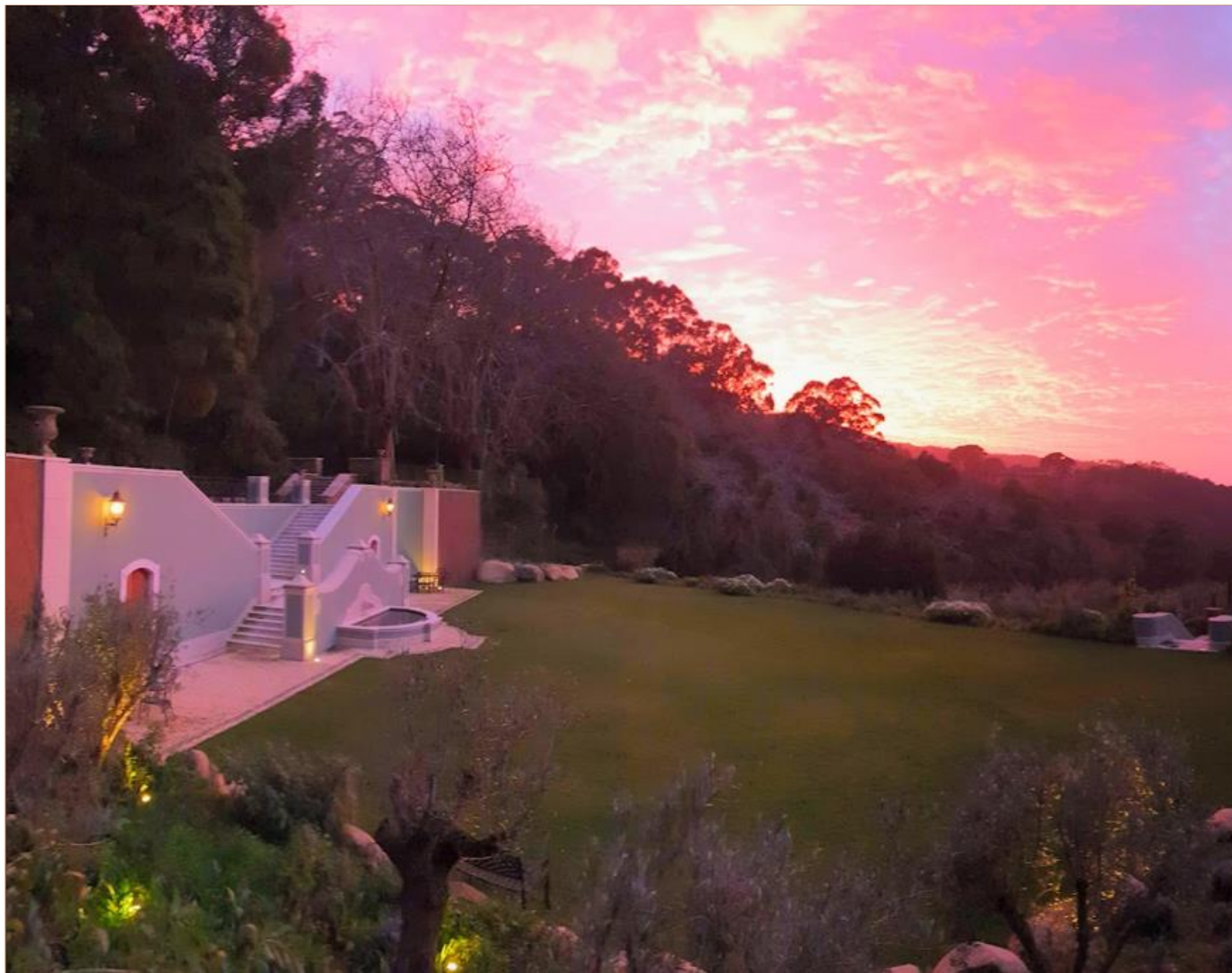
*Sintra*

## The Monseratte Pool Grounds

This area can host an evening event. Our outdoor sound system provides for a selection of music to fill the background while our uplights illuminate the chestnut tree gracing the terrace overlooking the pool. Here, we have hosted some wonderfully elegant evenings.







QUINTA DA BELLA VISTA

*Sintra*

## The Lawn

Big enough to host events for up to 800 persons, this area makes for the perfect site for an amazing party.





QUINTA DA BELLA VISTA

*Antea*

## The Villas

Exquisitely decorated, tastefully matched, the interiors provide for a cozy country feeling which is blended with elegance and timelessness.

Wooden ceiling paneling, and a warm décor, with fast internet and Sonos music piped in, and bathrooms with heated floors, all make for a comfortable stay.







QUINTA DA BELLA VISTA

*Sintra*

## Shamballa Suite

With a fireplace and incredible views, this suite will be the perfect place to wake up after the party.

Soft indirect lighting, allows for unhindered views of the Atlantic Coast.







QUINTA DA BELLA VISTA

*Sintra*

## Monseratte Suite Bathroom

What better way to relax than taking a warm candlelit bath with scented bath salts? A romantic bathroom adds that special touch.











QUINTA DA BELLA VISTA

*Sintra*

# The Grounds









QUINTA DA BELLA VISTA

*Sintra*

## Bathed in Sun

Enjoying an optimum south-west orientation, all the houses enjoy the best of light throughout the day. Sunrise comes a little later as the hills cover the east side.

The property is also protected from the strong north-northeasterly winds and the southerlies as it is hugged by the Sintra hills. Only strong westerlies can be felt.



# Suites Distribution – Capacities & Amenities

Floor	Name of Suite	Ensuite Bathroom	Bathtub	Shower	Private Access	Pull-out sofa/bed	Fireplace	USB Plugs	Kettle	Nespresso Machine	Mini Bar / Fridge	Fan	Approximate Area m2	View	ELSAFE (Hinges)	Folding Luggage Racks	TV	Remarks
<b>The Palacio</b>																		
Floor 3	Royal Suite	Y	Y	Y	N	N	Y	2 black	Available	Available	Available	Standing	102	NWS	Right	4	Y	Owners' Suite
	Sherlock's Suite	Y	Y			N	N	2 black	Y	Y	Frosty	Standing	26.3	E	Right	1		Balcony with sun umbrella, small round table and two chairs
Floor 1	Heritage Suite	Y	Y		N	N	N	3 white	Y	Y	MKS-13	Table	24	WS	Right	1		Balcony with dining round table and two chairs
	Garden Suite	Y	N	Y	N	N	N	3 white	Y	Y	Vinsider 41	Table	36	S - Garden	Right	2		
	Orient Suite	Y	N	Y	N	N	N	3 black	Y	Y	Vinsider 41	Table	30	W	Right	1 Existing		Balcony with dining round table and two chairs
<b>Casa Comporta (Palacio's Poolhouse Annex)</b>																		
Floor 2	Ocean Mist Suite	Y	N	Y	Y	Y	N	3 White	Y	Y	Vinsider 41	Table	38	W	Left	2		
	Sea Breeze Suite	Y	Y		Y	N	N	2 white	Y	Y	Frosty	Table	21	W	Left	1		
Floor 1	-																	
<b>Villa Monserrate</b>																		
Floor 3	Shambala Suite	Y	Y	Y	Y	N	Y	3 white	Y	Y	Vinsider 41	Table	29	W	Left	2		
	Monseratte Suite	N	Y	Y	N	N	N	2 white	Y	Y	Vinsider 41	Table	21	W	Right	1		
Floor 2	Teepee Room	N	N	Y	N	N	N	1 white	Available	Available	Access to Kitchen	Table	18		N/A			2 sets of bunk beds of 90 x 200 cm can sleep four children or four adults.
Floor 1	Explorer Suite	Y	N	Y	Y	N	N	3 black	Y	Y	Vinsider 41	Table	62	WS	Right	2		Double shower, this is where owners were before moving to the Palacio, can be available with living room with kitchen, dining, and home cinema as a separate one bedroom apartment with own access.
<b>Villa Camelia</b>																		
Floor 2	Jasmin Suite	Y	N	Y	Y	N	N	2 white	Y	N	Access to Kitchen	Table	20	ES	Left	1		Balcony
	Lavender Suite	Y	Y		Y	N	N	2 white	Y	Y	MKS-13	Table	22	SE	Right	1		
Floor 1	The Little Prince	N	N	Y	N	N	N	2 white	N	N	Access to kitchen	Table	14	SE	Left	1		"Kids" room - bathroom separated by corridor leading to kitchen
	Safari Suite / Studio	Y	N	Y	Y	N	N	3 black	Available	Available	Already has	Table	29	SE	Right	1	Y	Completely independent studio

















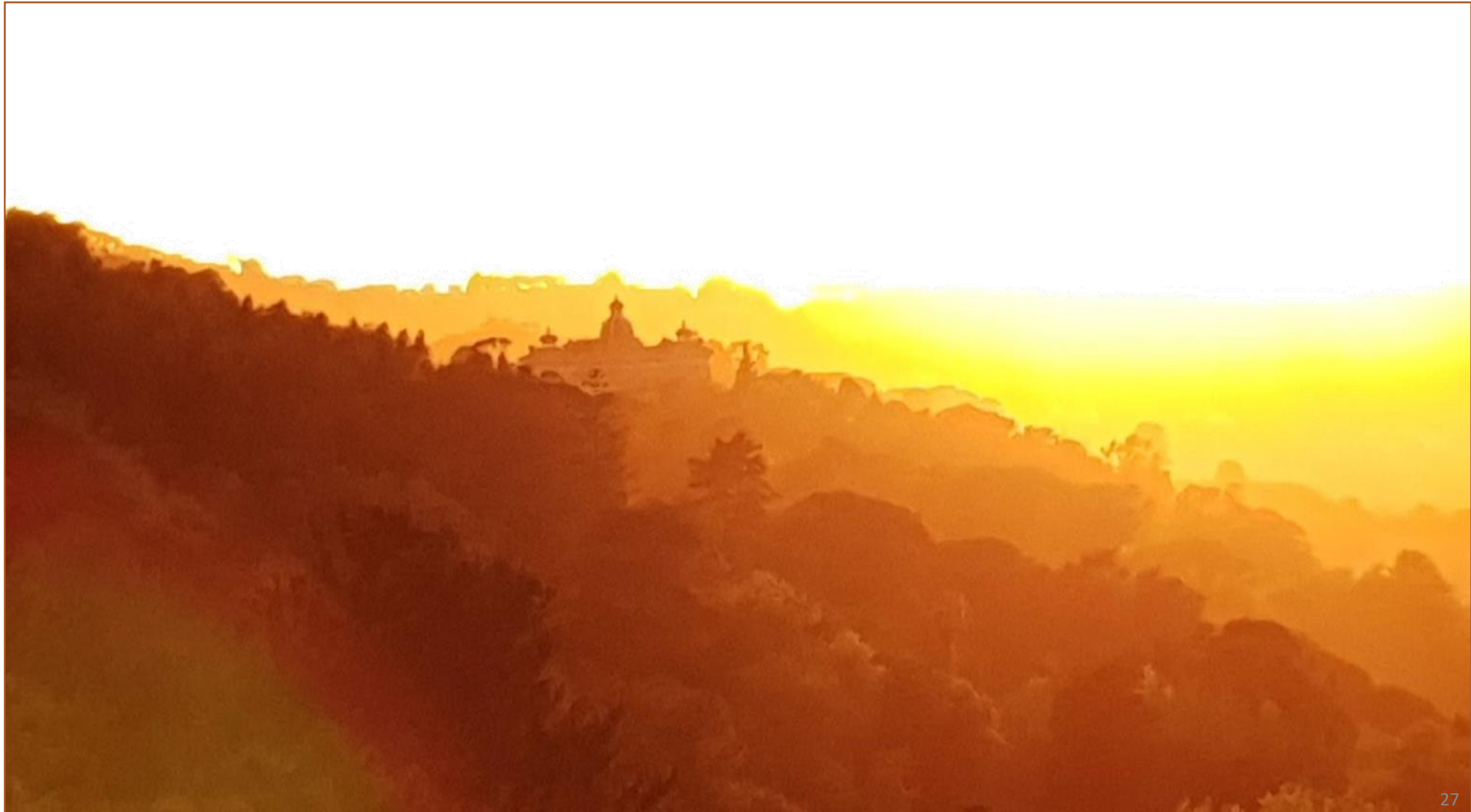




















QUINTA DA BELLA VISTA

*Sintra*

# The Greenhouse



Total Length inside: 29.88 m  
Total Width inside: 10.52 m

Full Height (inside): 5.22 m

Height to the beams: 4.00 m

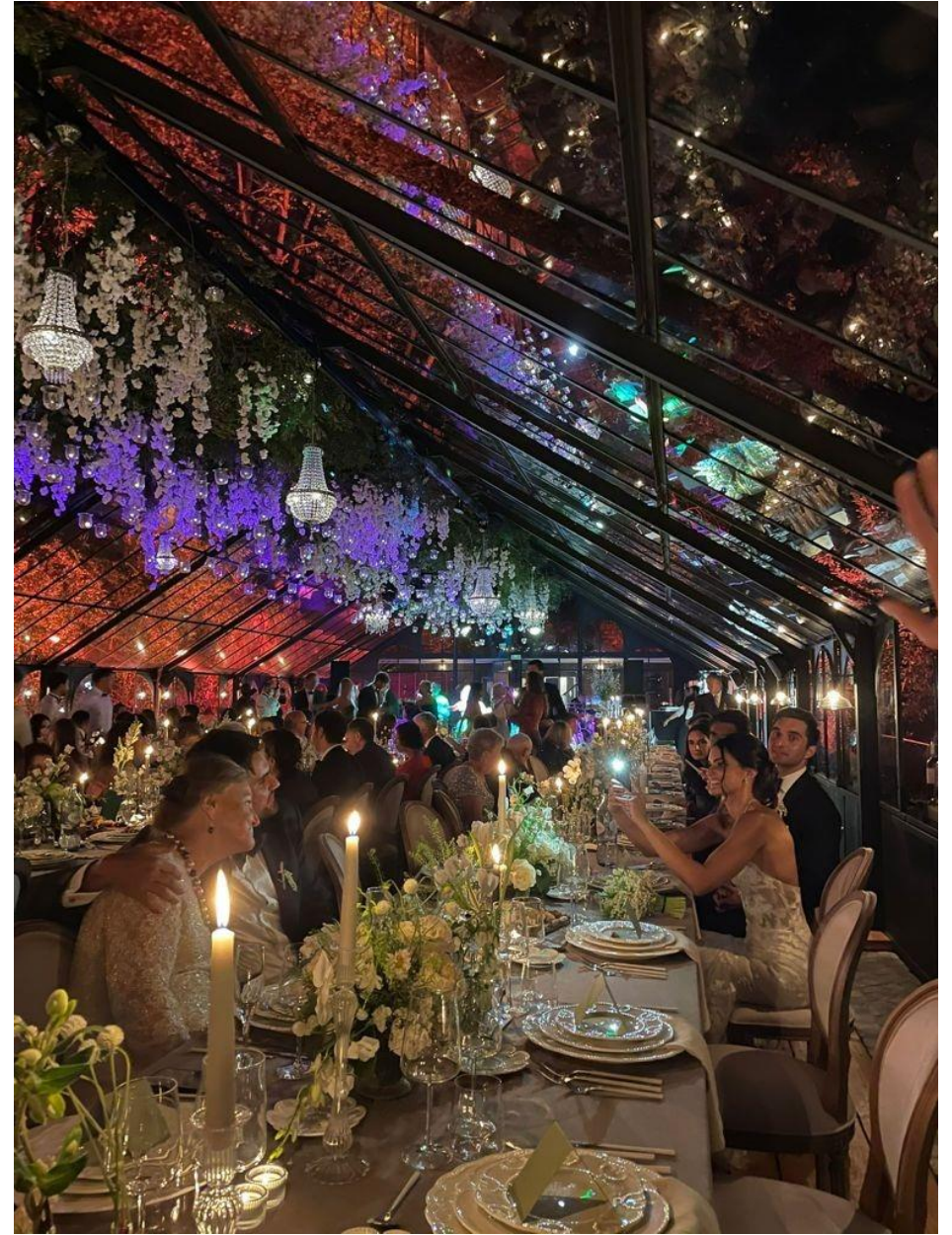
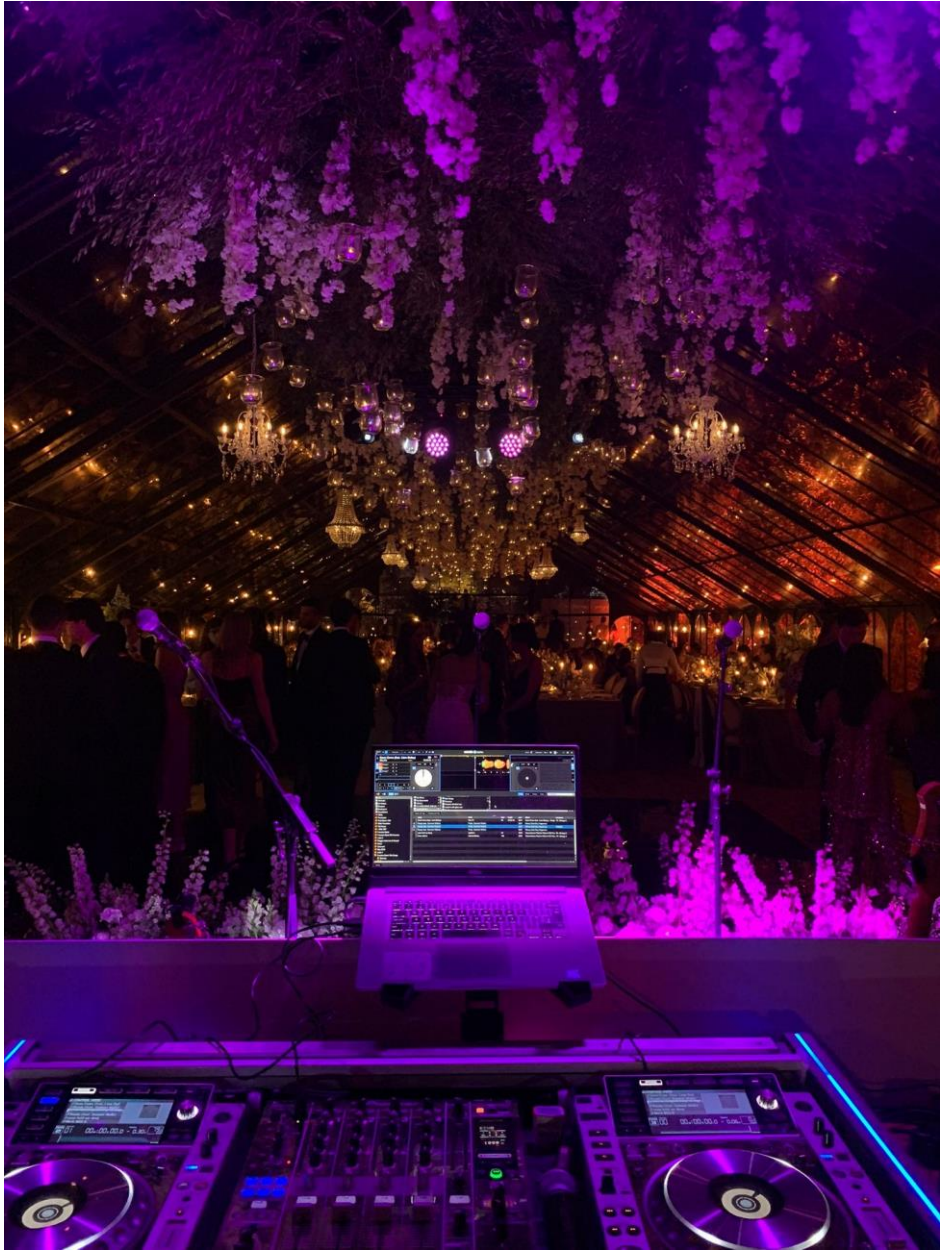
Total beams 9 + 2 (on the end walls)  
Width of each beam: 2.95 m

H Height on sides: approx. 1.85m

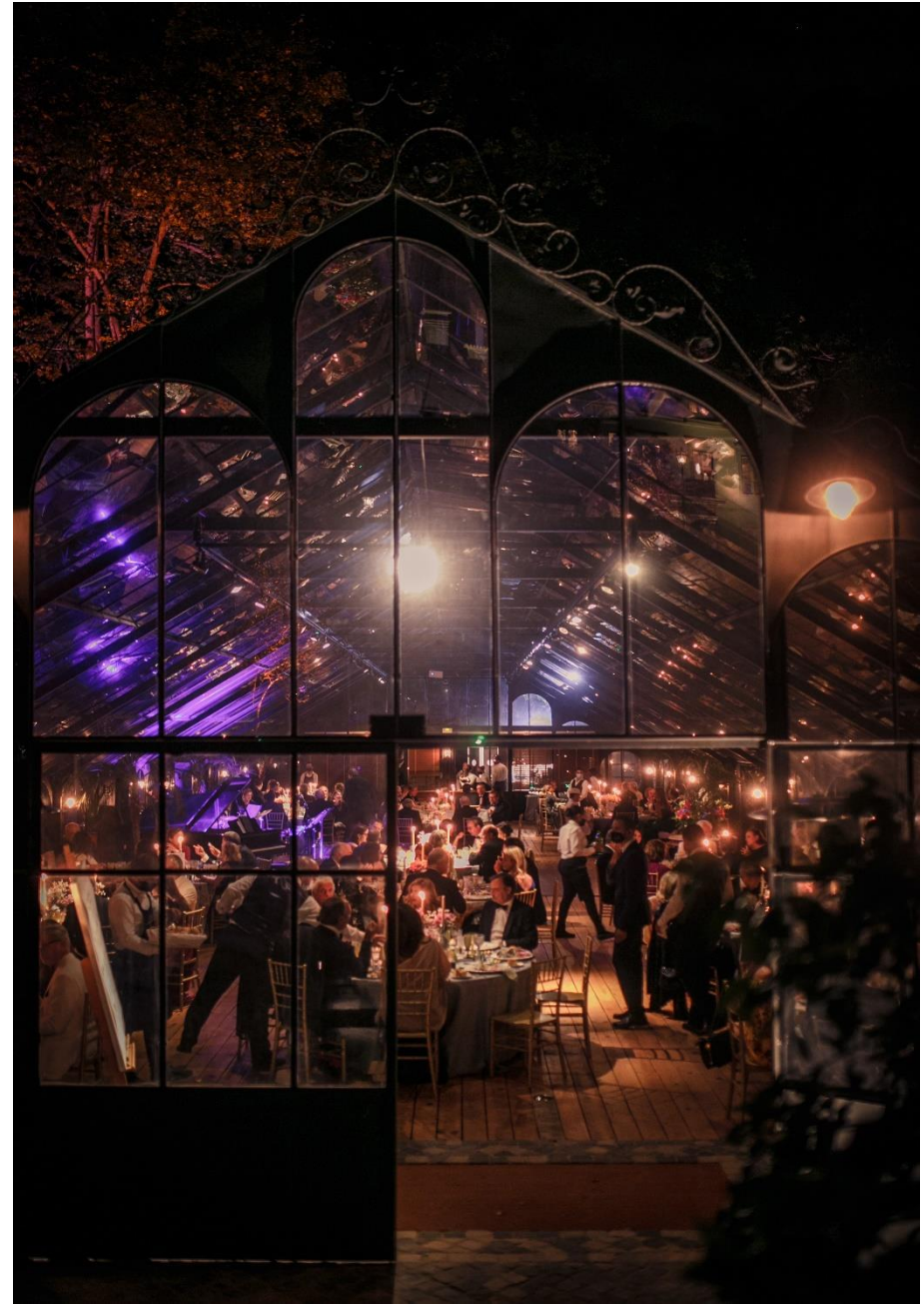
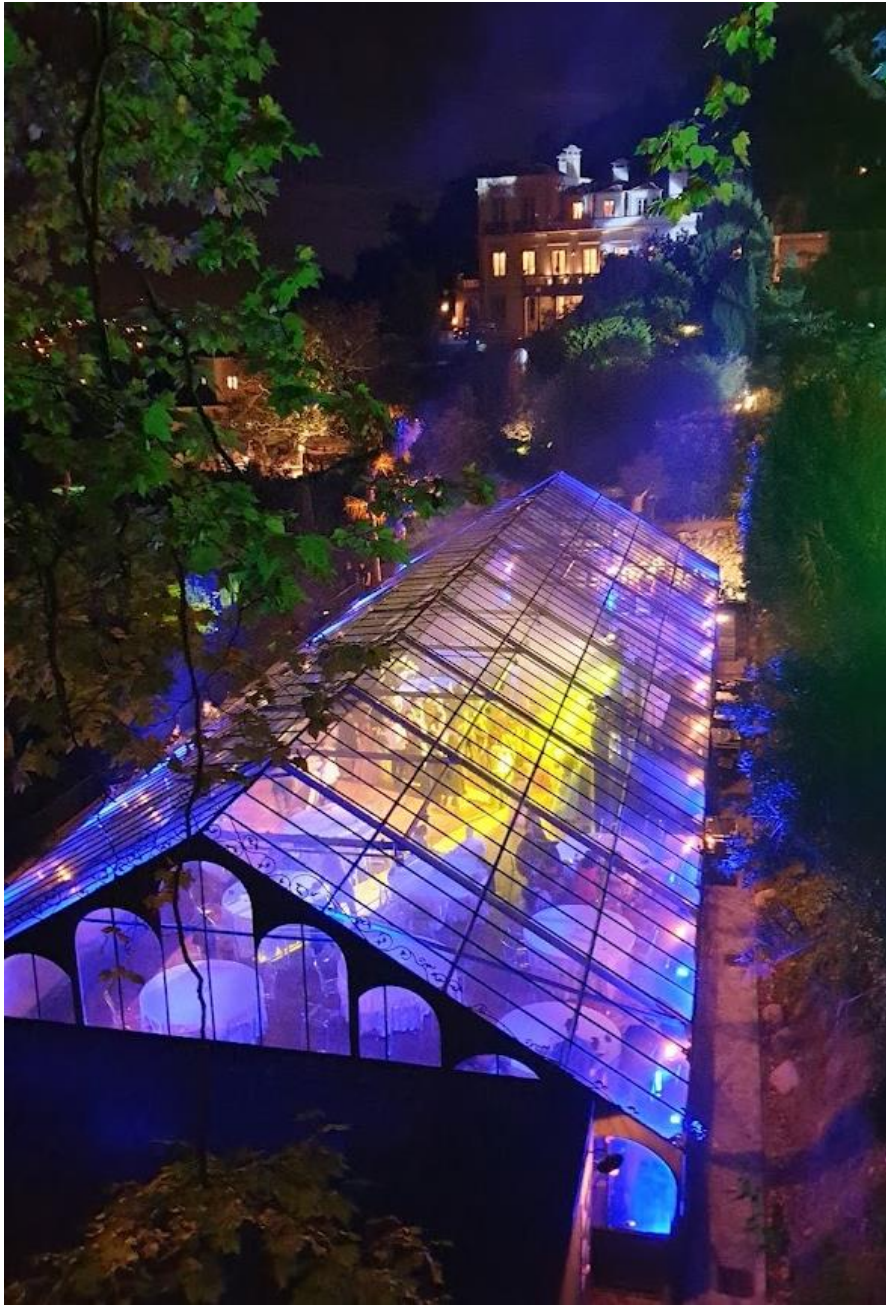














Total Length inside: 29.88 m  
Total Width inside: 10.52 m

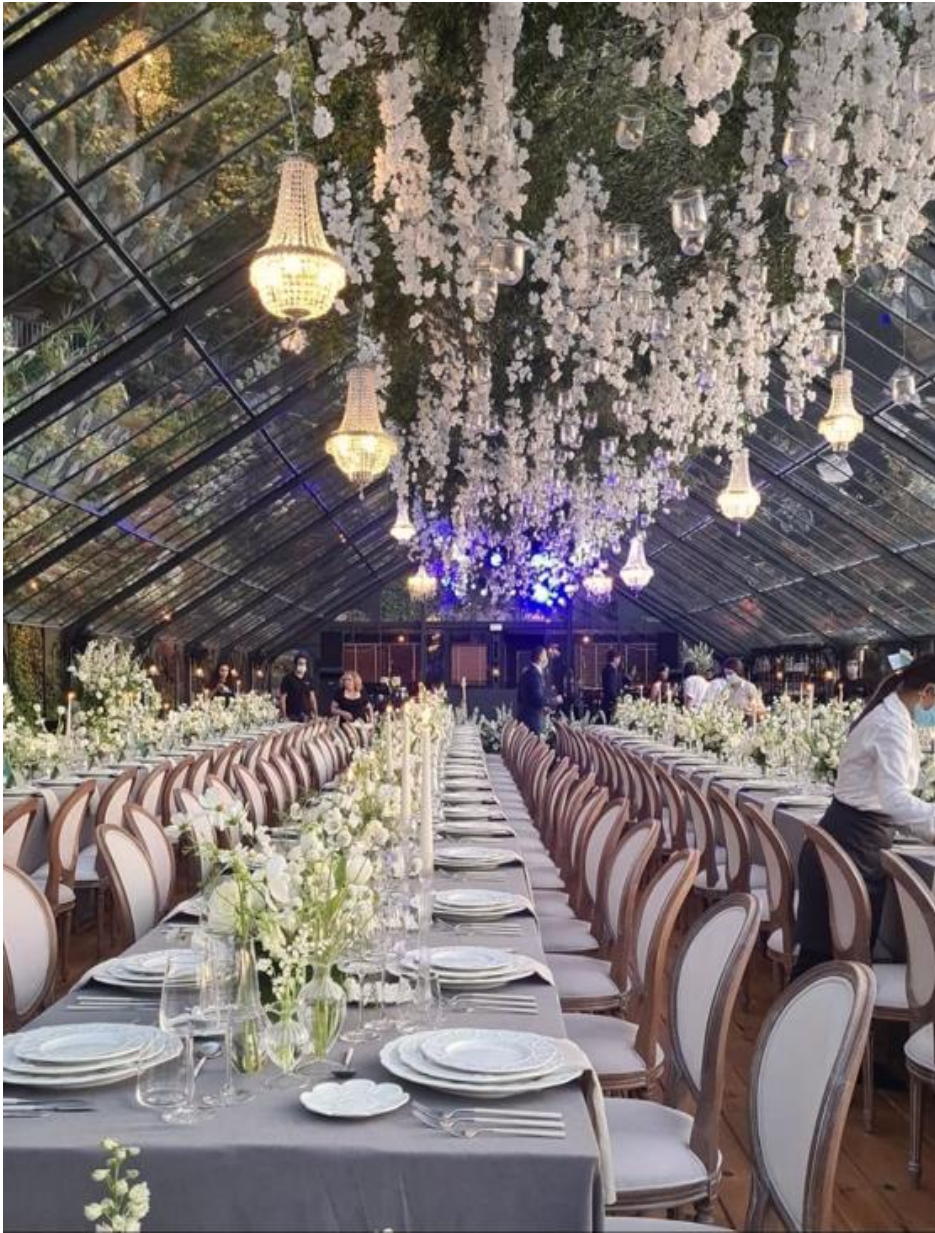
Full Height (inside): 5.22 m

Height to the beams: 4.00 m

Total beams 9 + 2 (on the end walls)  
Width of each beam: 2.95 m

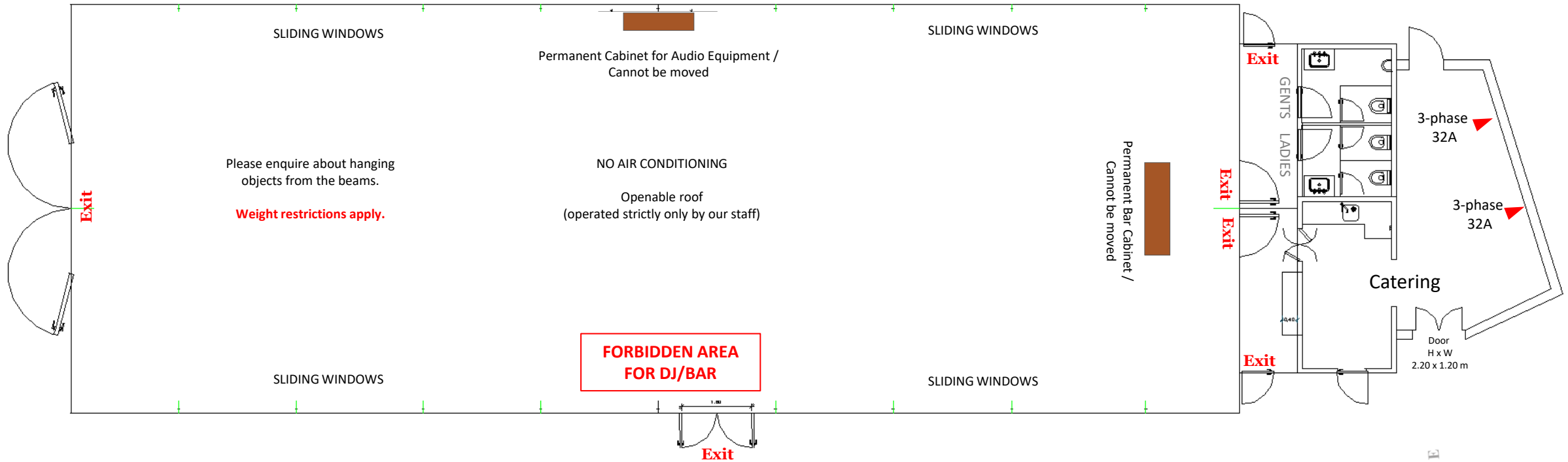
Height on sides: approx. 1.85m







# The Victorian Greenhouse



The dimensions of the Greenhouse are 30 m x 10.5 m.

These do not include the kitchen, toilets, and corridor.

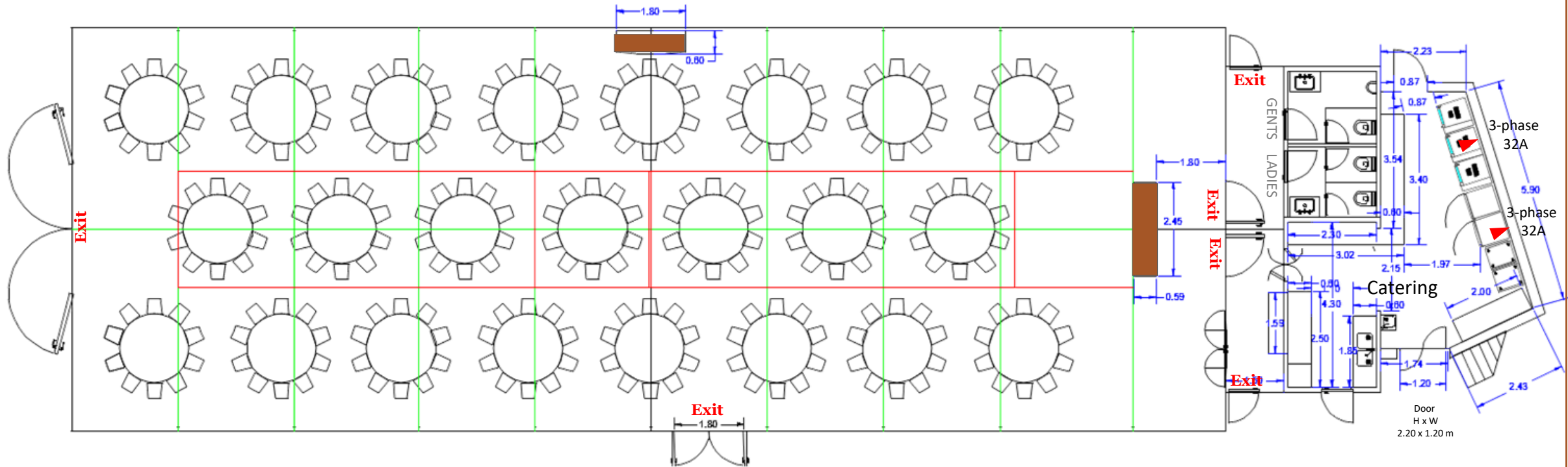
The net surface area is reduced at the center because of the furniture of the sound system and the bar in front of the kitchen and toilets.

Please consider **evacuation corridors towards the emergency exits** in case of fire, earthquake, or other reasons that may cause panic.





# The Victorian Greenhouse



Maximum capacity for the Greenhouse is 26 round tables of 1.80 m diameter for 10 persons each or 260 persons or 312 persons with 12 persons per table.

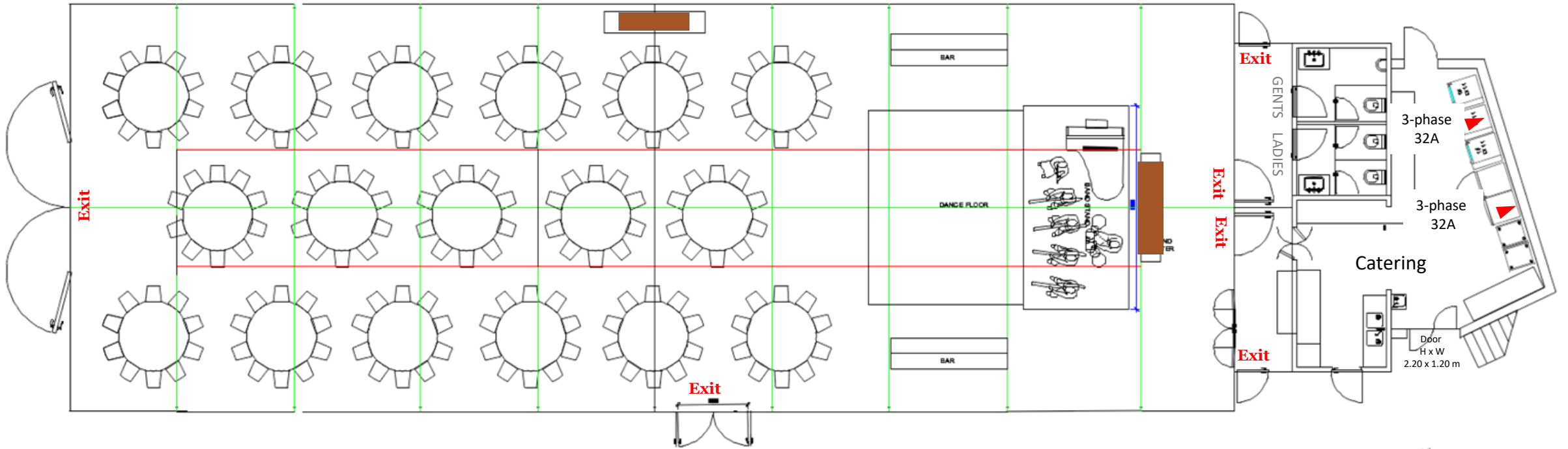
The capacity is reduced to 22 round tables or 220 /264 persons if a dance floor is installed in the middle. The dance floor can be round (diameter 5.60 m) or rectangular (4.50m x 4.50m).

There are bathrooms for ladies and gents at the back plus a kitchen with two 3-phase 32A electrical connections for food heaters and other catering equipment.





# The Victorian Greenhouse



The capacity is reduced to 17 round tables or 170 / 204 persons if a 7-person band stand dance floor is installed.  
The dance floor in this case is 5.00 m x 4.00 m and the band stand is 2.70 m x 5.25 m

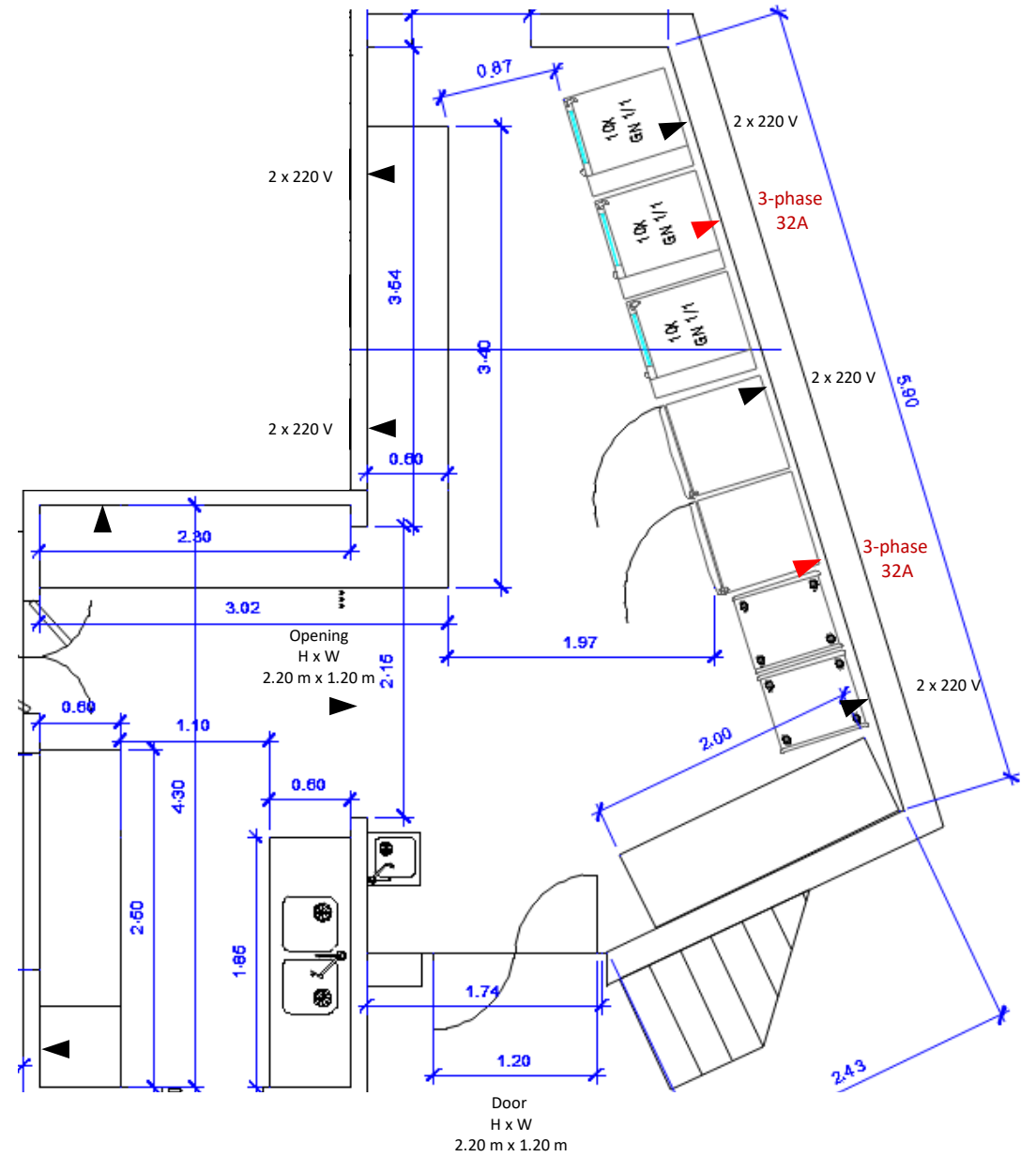
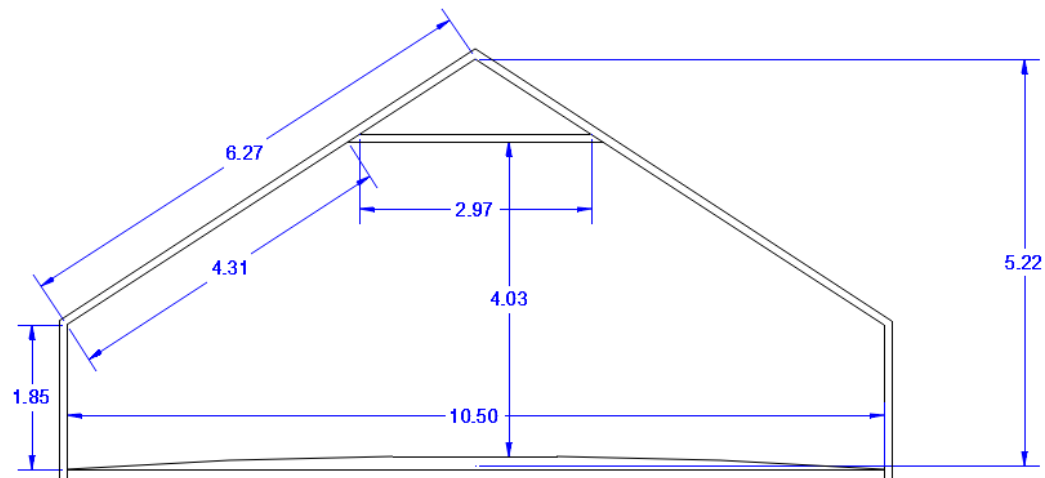
Please consider **evacuation corridors towards the emergency exits** in case of fire, earthquake, or other reasons that may cause panic.





# The Victorian Greenhouse

## Section Cut & Catering Space





# The Greenhouse

## Sound Restrictions & Curfew

Dear Guests,

According to Law no. 9/2007, 17 of January, sound levels must not exceed legal limits outside the property lines, with specific dB(A) limits set for different times of day.

Towards this end, after sound measurements, the limit inside the Greenhouse is set at max 88 dB(A) with short dynamic peaks of *up to 98 dB(A) max.*

The Greenhouse doors, windows, and the roof, must remain closed when dance music is playing.

The Estate maintains veto and control rights over sound volume and sub-base volume.

All music in the Greenhouse must be channeled through the fiscal-authorities pre-approved Advanced Sound Limiter by dBelectronics - Model CAP21. Tampering with the limiter may result in music being stopped by the Authorities or the Estate, with the forfeiture of the security deposit as a consequence.

**Curfew:** Music at the Greenhouse will be automatically lowered by our sound limiter by 10 dB(A) to max 78 dB(A) at 11.30 pm and **will end at 12 midnight, sharp.**

The Event Planner is responsible for maintaining noise levels within legal limits and must have full control and authority *throughout the event, (or until the last person has left).*

**Failure to comply with the restrictions may result in the forfeiture of the security deposit and termination of the event.** The estate reserves the right to monitor and adjust sound levels during the event, and the supervisory entities may take precautionary measures, including interruption or cancellation of the event, to avoid serious damage to human health.

**The Estate is not liable for any loss incurred by the Client** in case of event interruption or cancellation due to failure to comply with the sound and light restrictions or because of intervention from authorities.

For videos from prior events, please check here:





# The Greenhouse

## Etiquette

Dear Guests,

**When using the Greenhouse, please observe the following safety rules:**

- **You are required to follow our strict NO-SMOKING policy.** Our wooden floor is grooved to allow the earth to breathe, the wood to expand and contract, and to diminish the echo and the sound levels in this open glass structure. Lit cigarettes and other flammable material may fall in the gaps and can cause a fire.
- **Absolutely no confetti permitted.** Confetti pedals may fall between the gaps or land on the wooden floor and trigger a fire, in combination with a cigarette or some other source of heat or fire. Further, confetti discolors and will stain the wooden floor.
- **Firework material of any kind is strictly prohibited.**
- Should confetti, cigarettes, cigars, or other possible flammable material be used and disposed on the floor in the Greenhouse, **you will be charged with the cost of the inspection of the space under the wooden planks and their removal plus damages.** Such an operation includes material and labor costs for the unmounting and refitting of the floor planks which can reach thousands of Euros.
- **Do not block exits.**
- **Kindly observe the sound and curfew limits.**

**Not following the above guidelines may result in the forfeiture of the entirety of the security deposit and the possibility for damage claims.**



# The Victorian Greenhouse

## Quinta's Basic Audio Equipment

**DYNACORD Mixer Amplifier Powermate 1000**

**CROWN Xti Amplifier**

**Pioneer CDJ-100S CD Players**

**Mixing Console Pioneer DJM 300 S**

**Effects Console Pioneer EFX 500**

**JBL Speakers**

**Dynacord Speakers**

**Dynacord Speakers for reverb**

**Subwoofer**

**Wireless Microphone**

**PA SYSTEM with 10 Speakers**

### PLEASE NOTE:

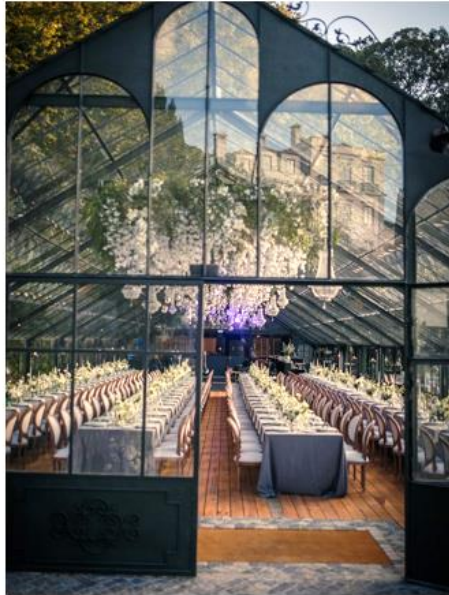
Additional service charges apply for installation and collection after use - please enquire.

A professional DJ should operate this equipment

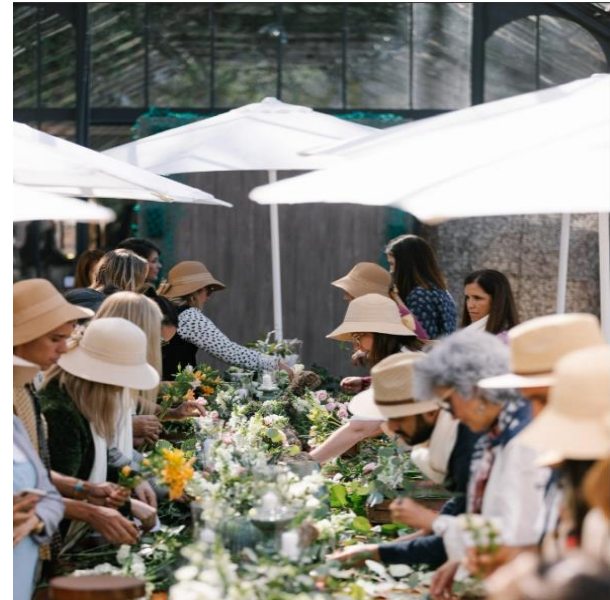
DJ service not included















QUINTA DA BELLA VISTA

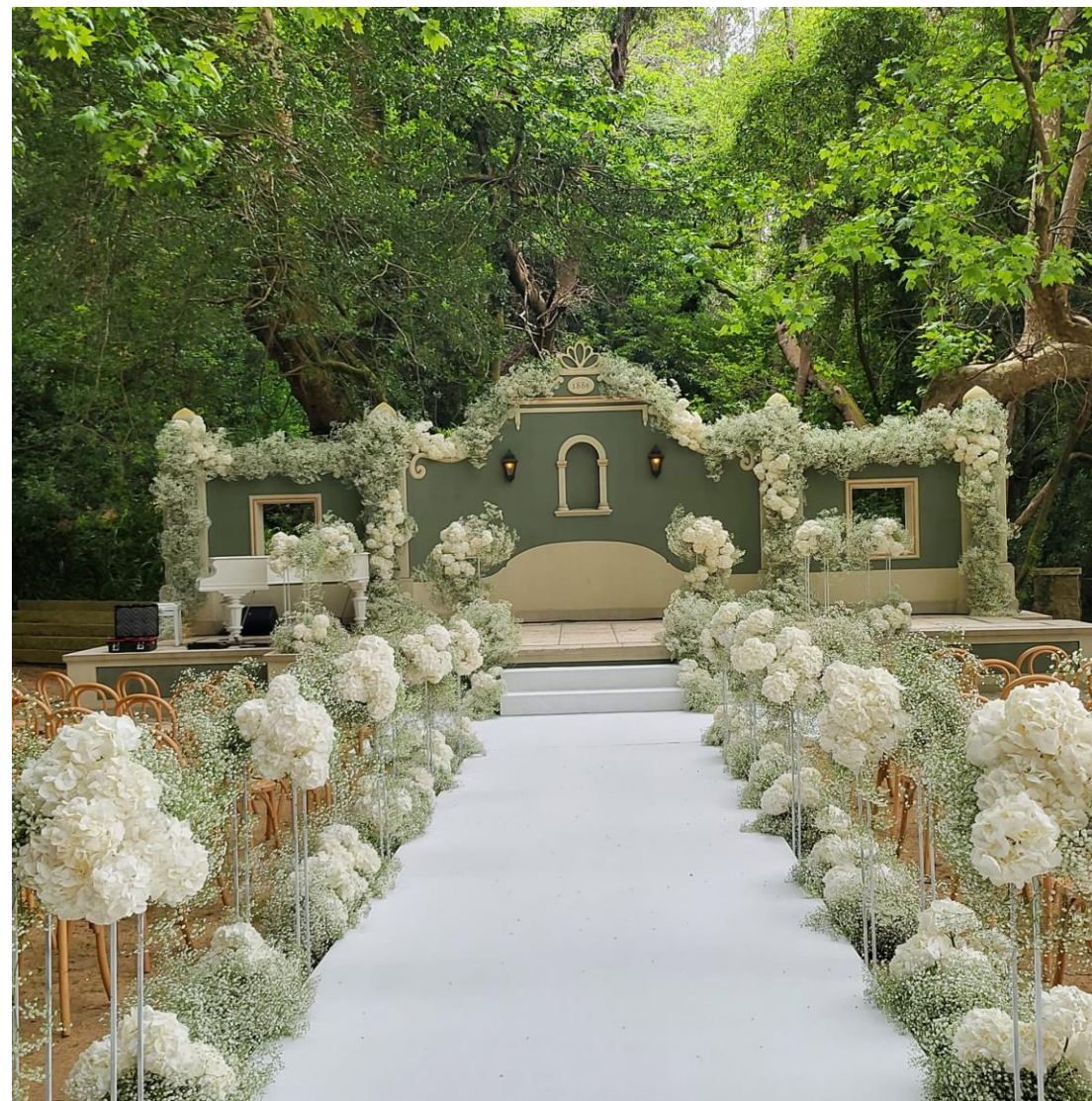
*Sintra*

# The Bella Vista Theater











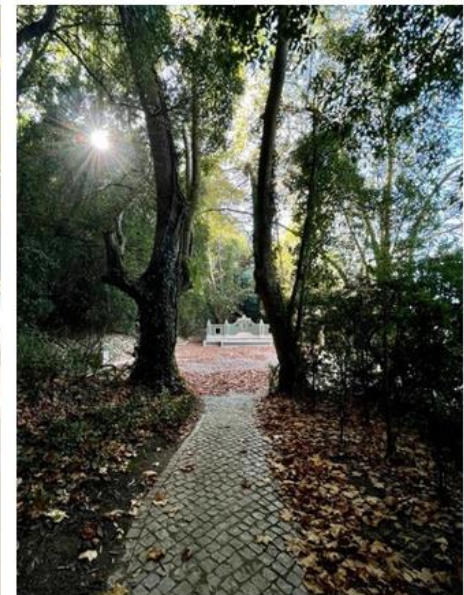
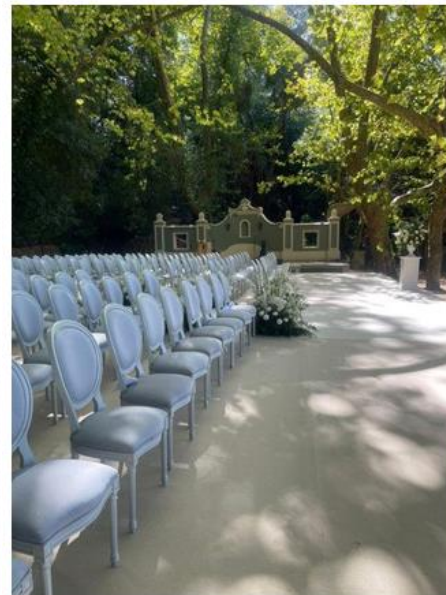






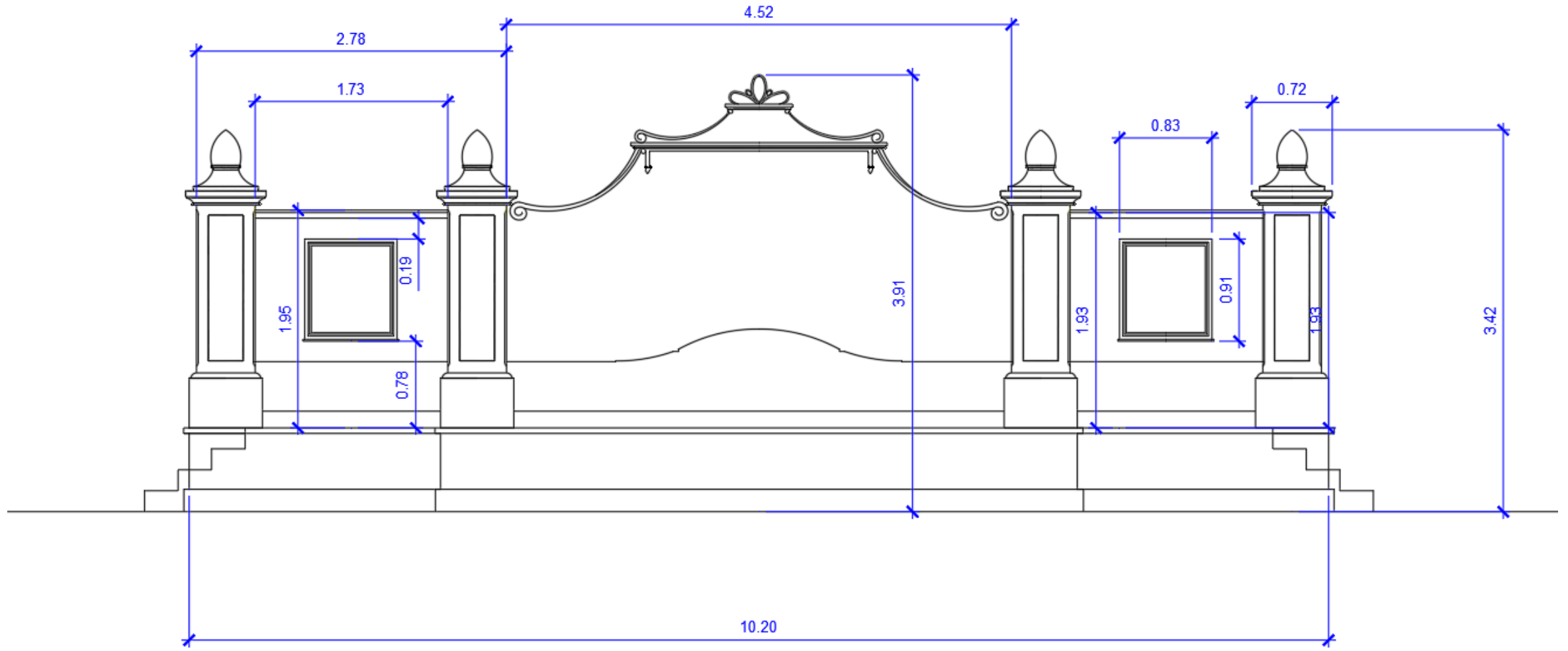
And can collaborative innovation with tolerance and cultural curiosity be the language we speak to create that narrative?





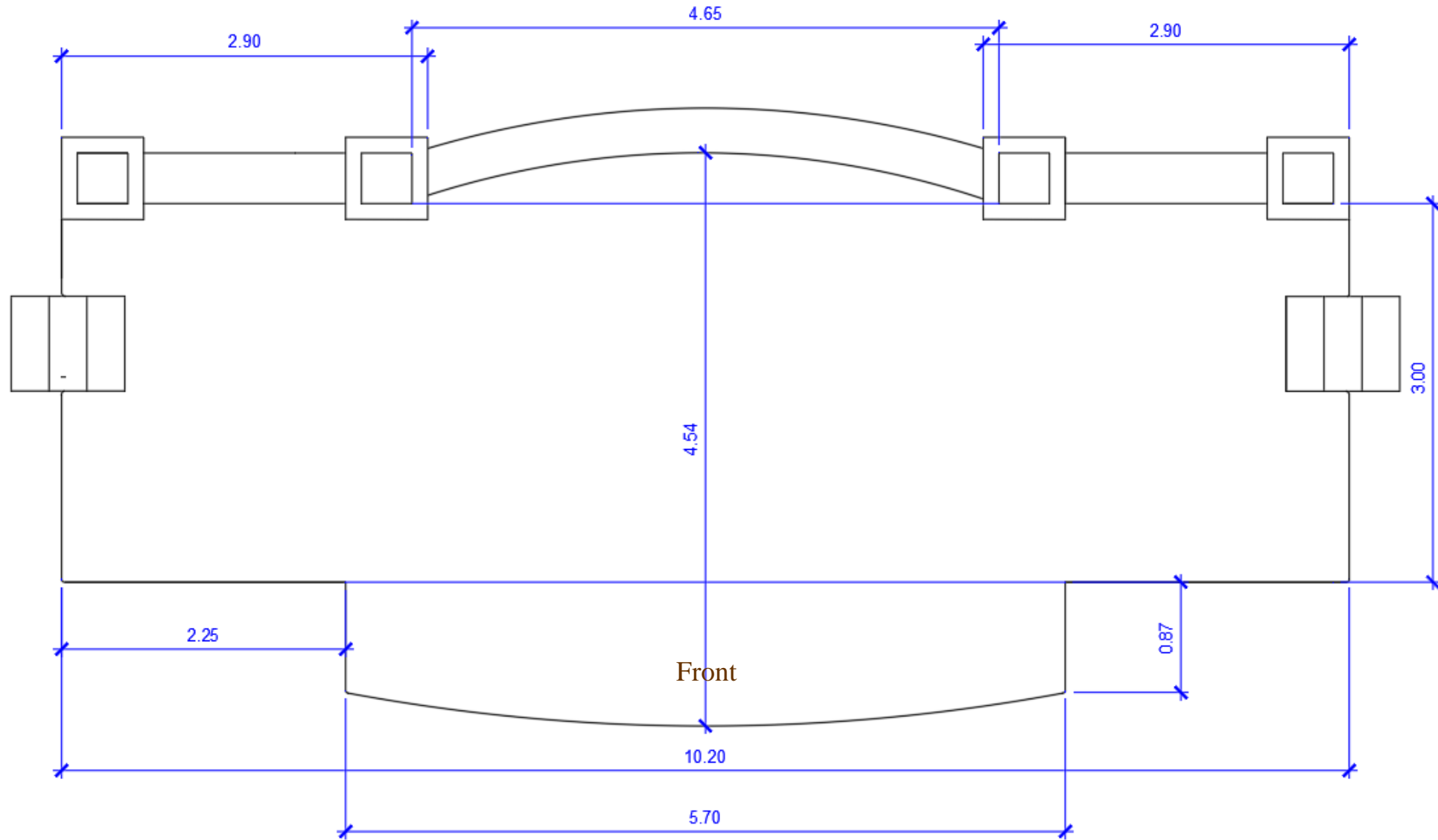


# The Bella Vista Theater



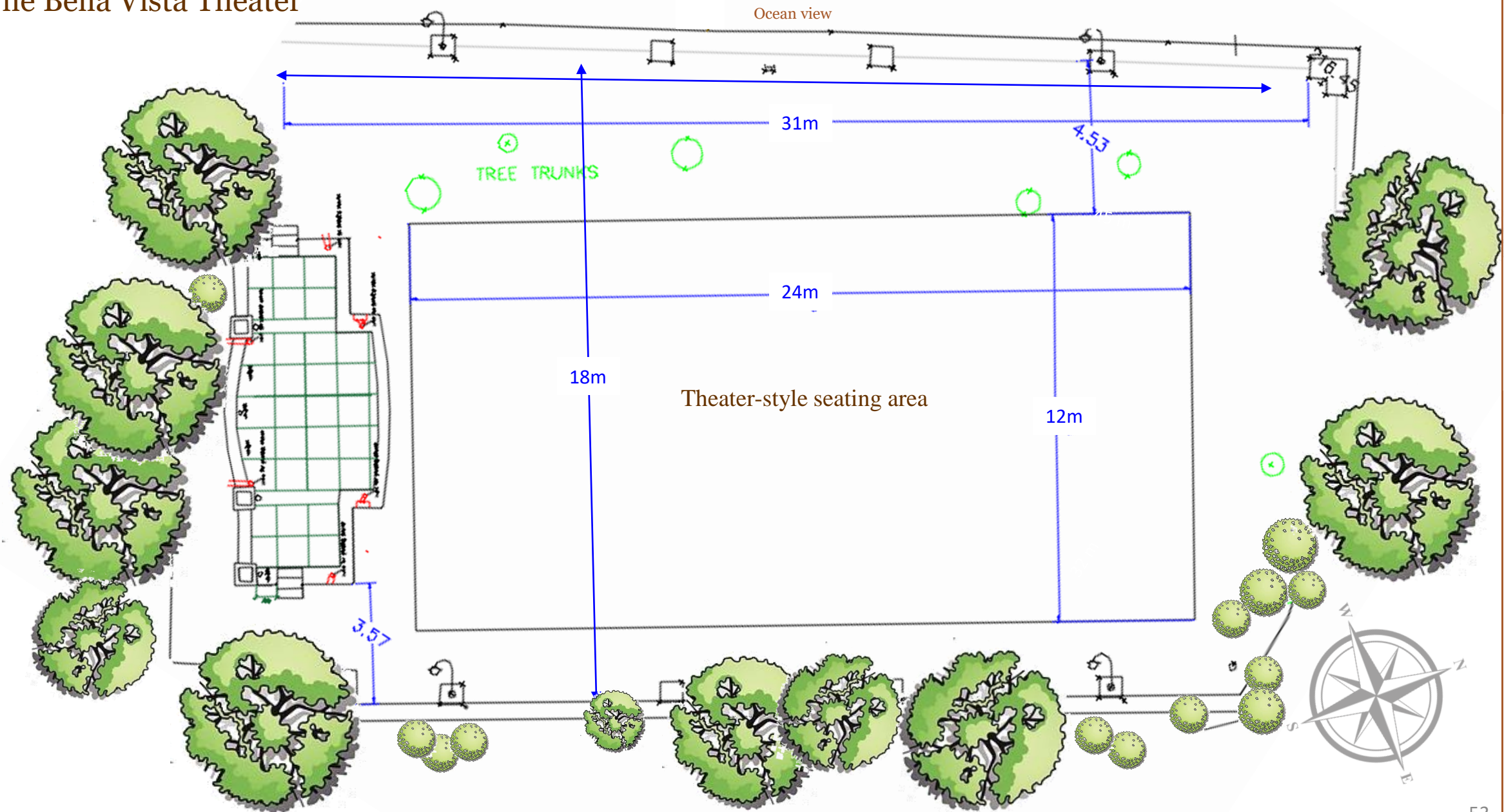


# The Bella Vista Theater





# The Bella Vista Theater







QUINTA DA BELLA VISTA

*Sintra*

# The Lawn & Grand Staircase



















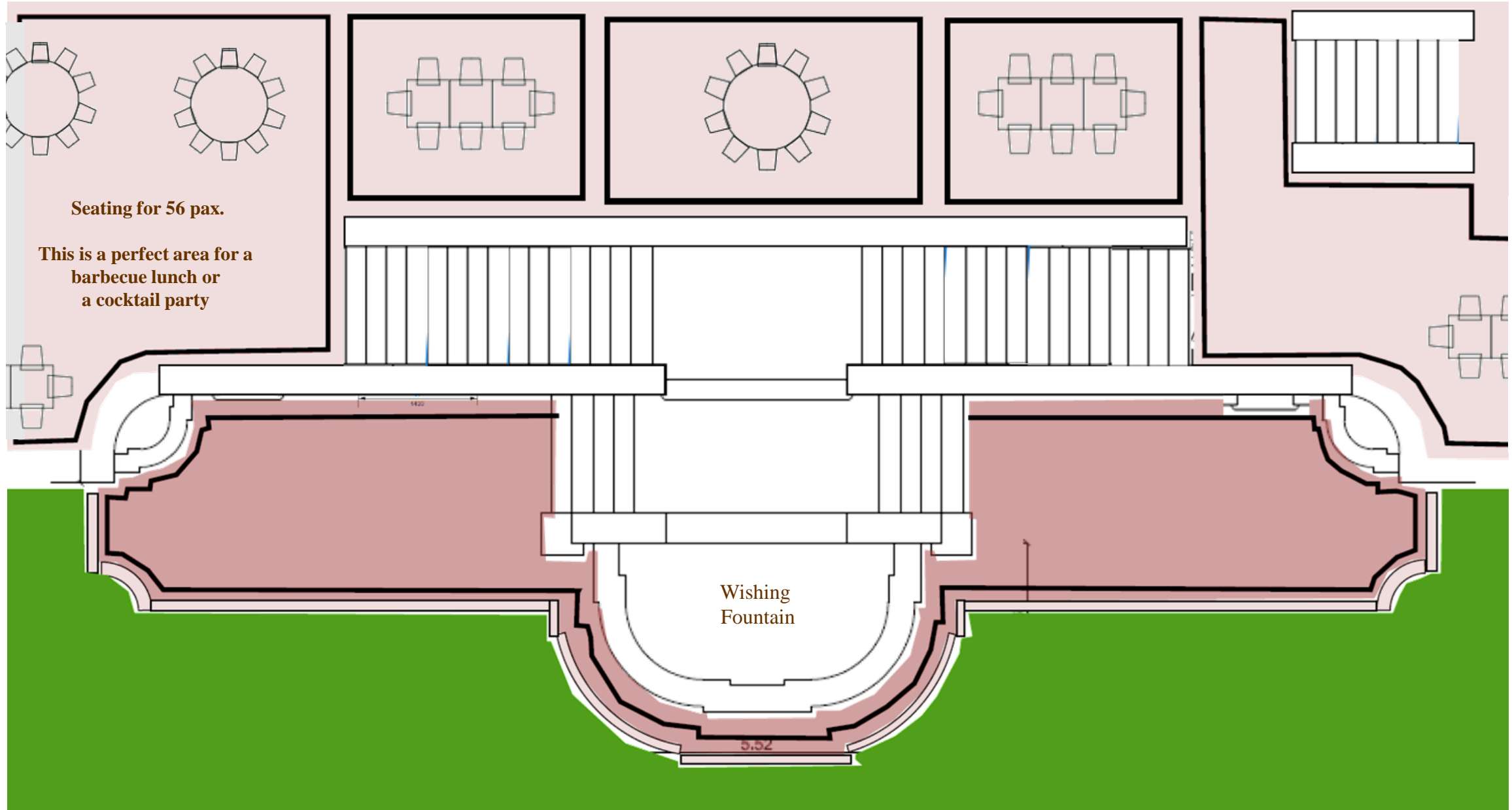






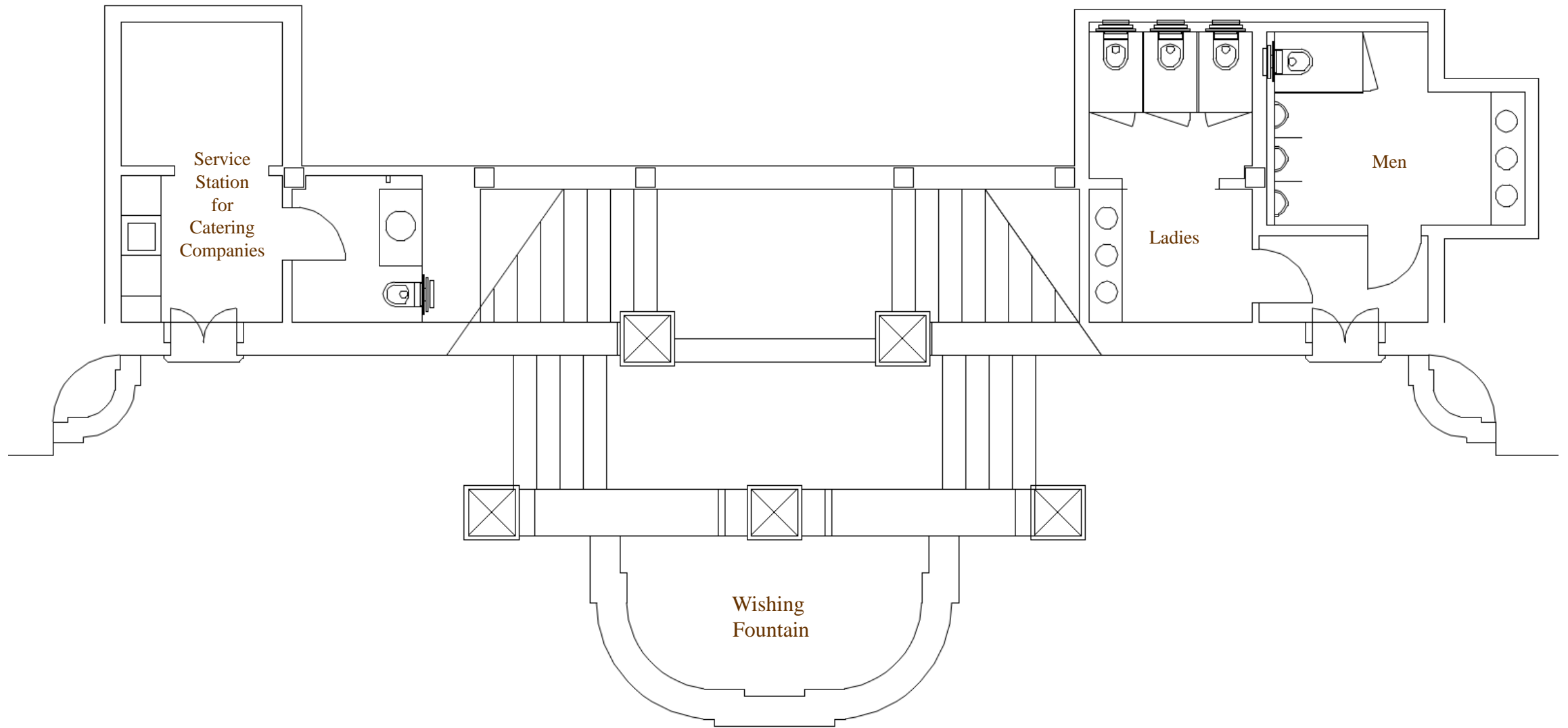


# The Lawn Staircase Top Level



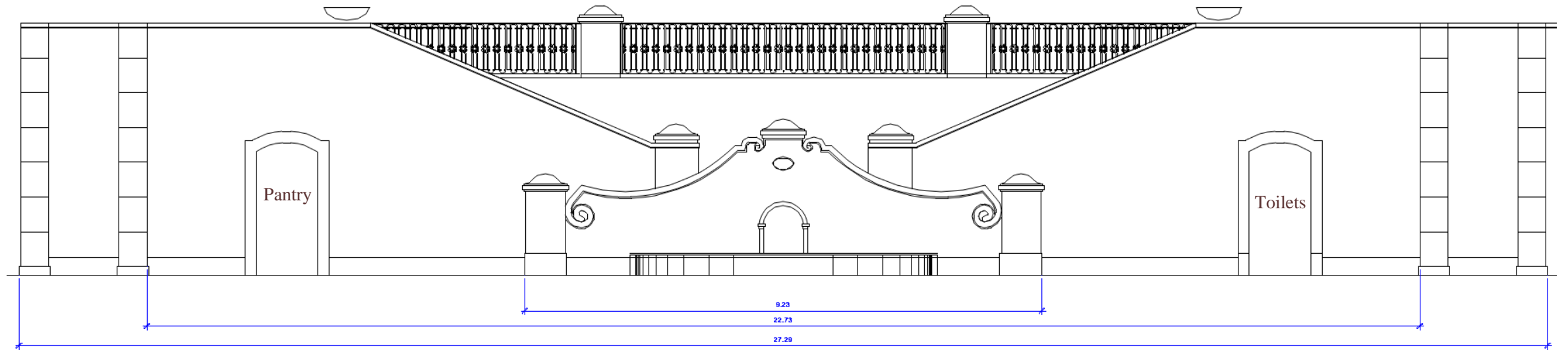


# The Lawn Staircase Lower Level



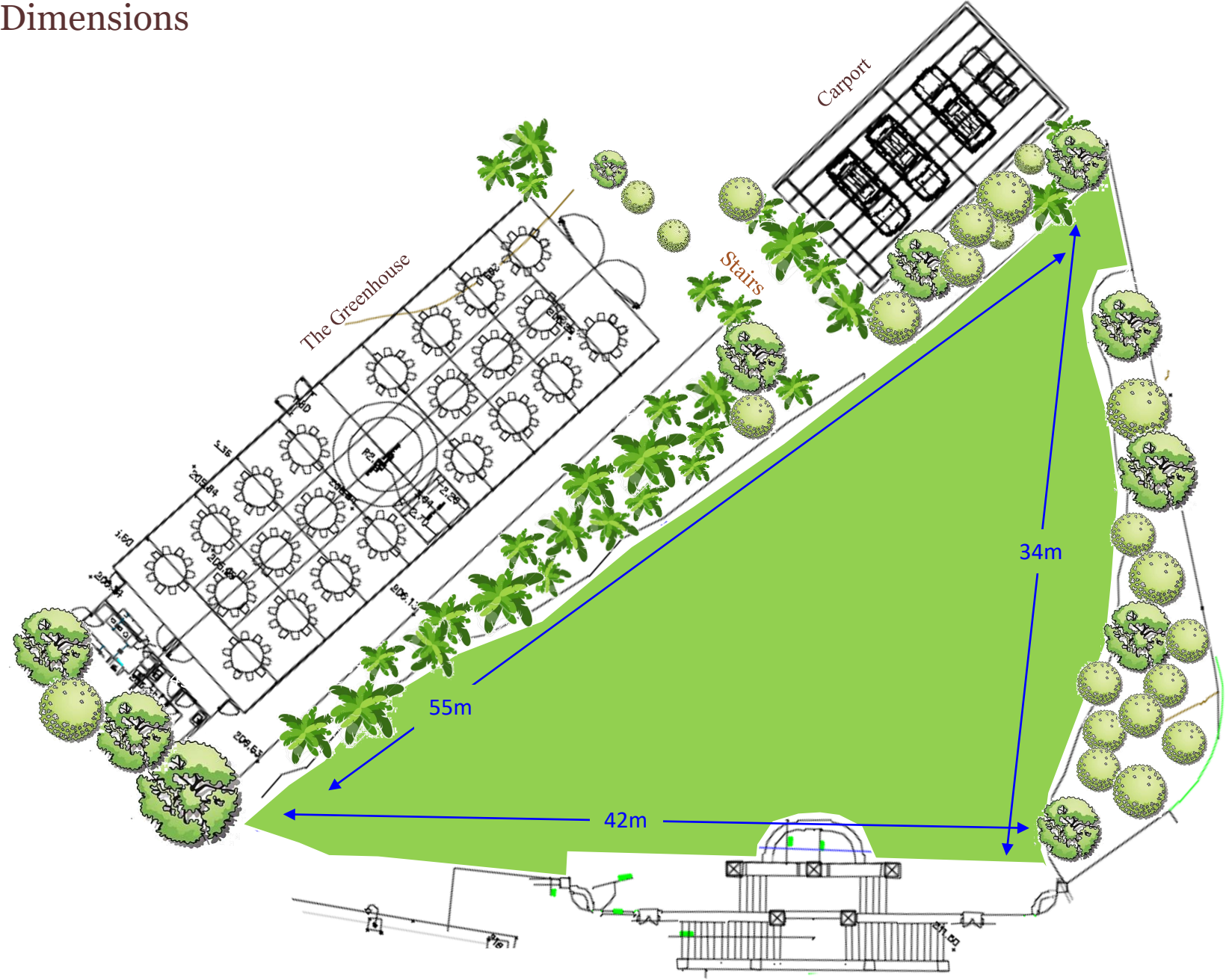


# The Lawn Staircase





# The Lawn - Dimensions







QUINTA DA BELLA VISTA

*Sintra*

# Palacio Adega









Panorama Terrace



DJ sound equipment is not included

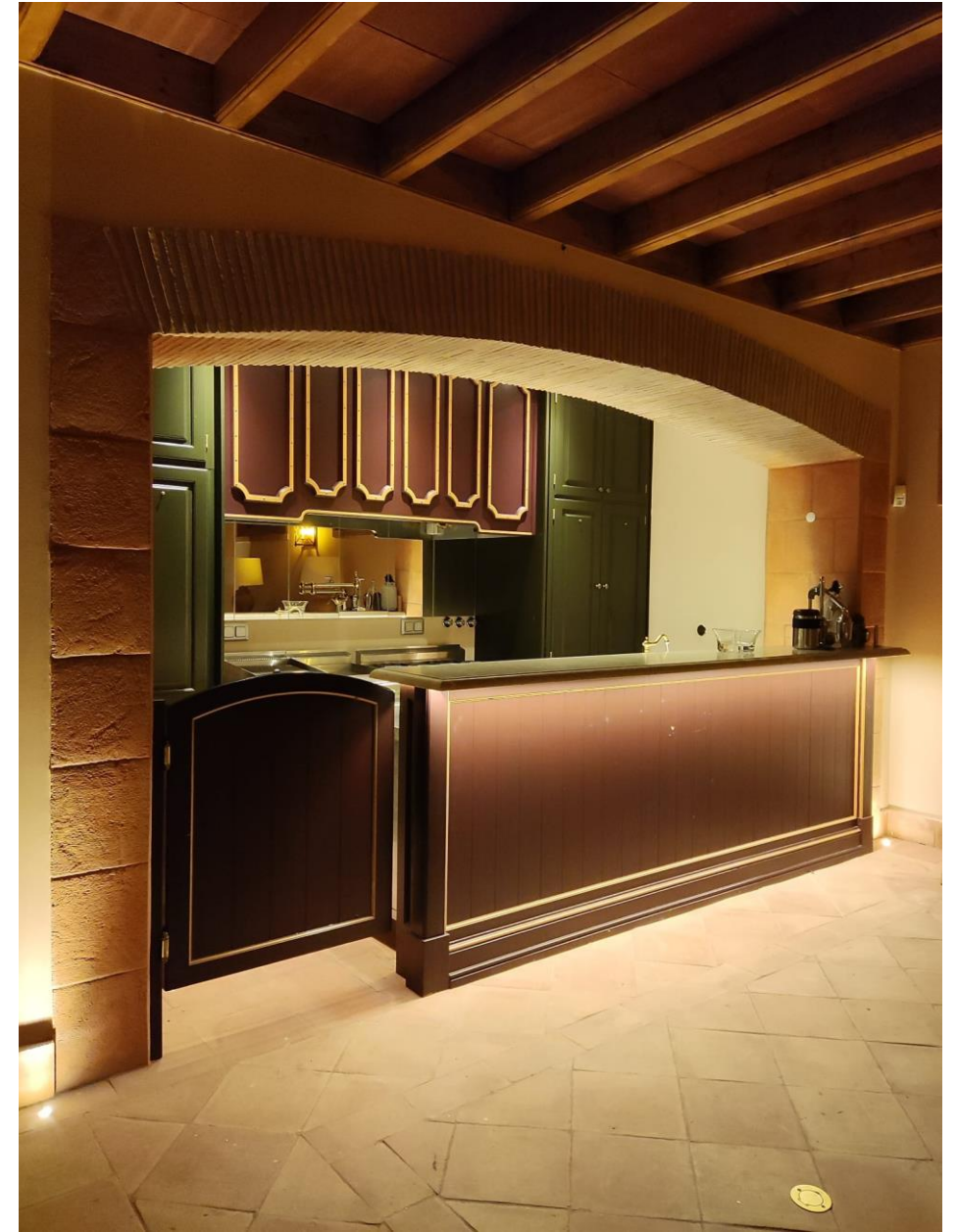






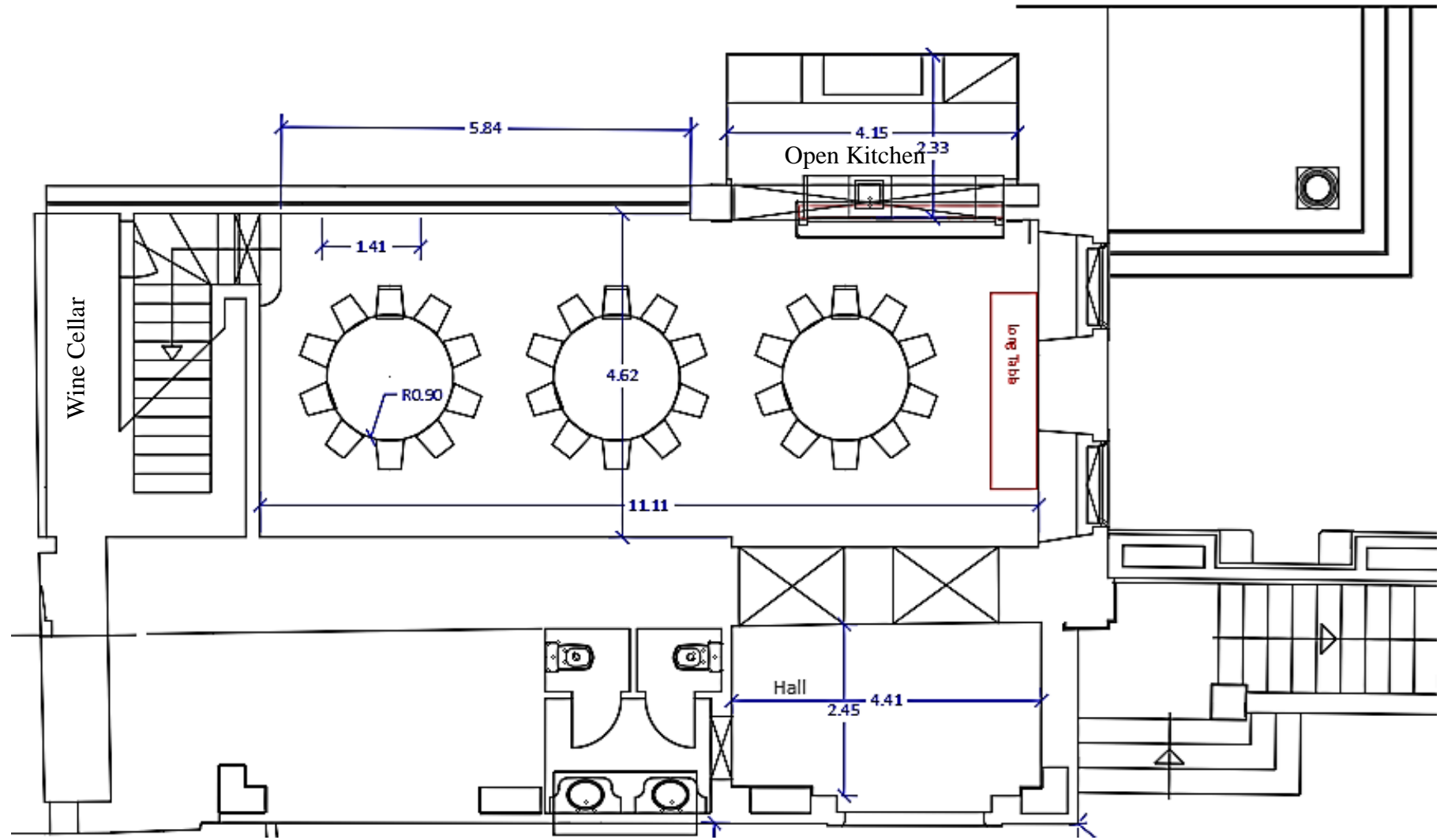






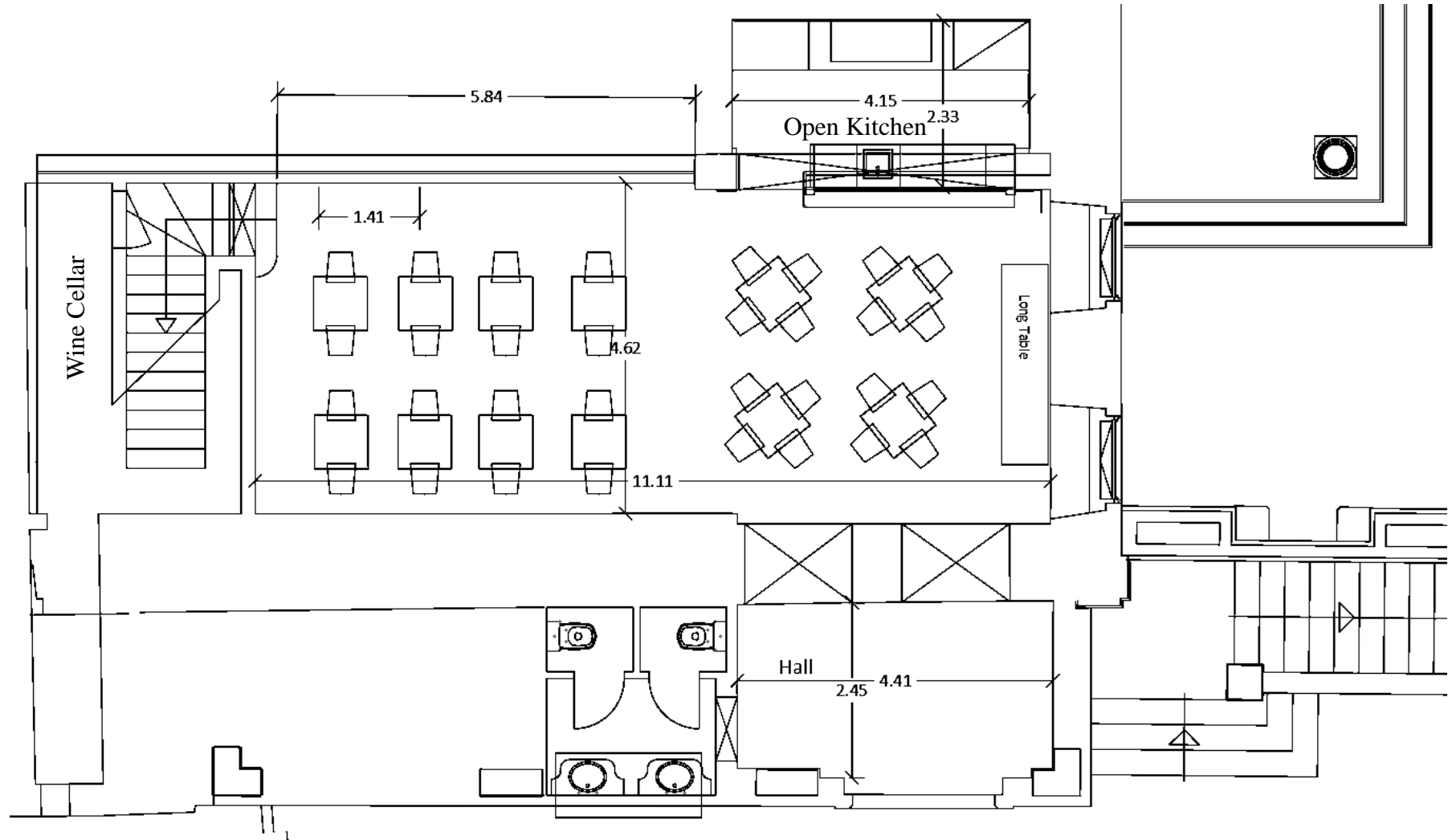


# Ground Floor – Adeg (capacity 30 persons)



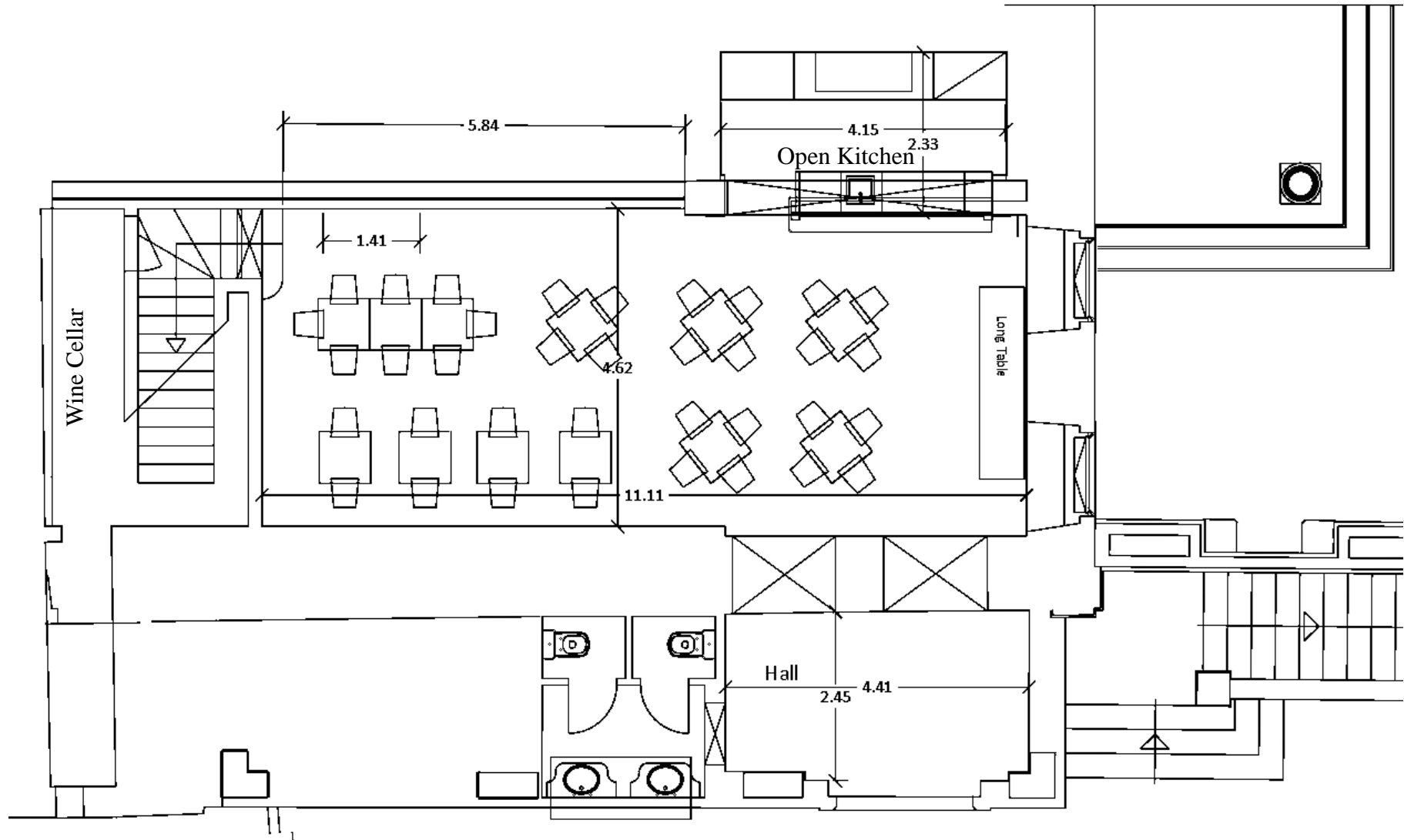


# Ground Floor – Adega (breakfast capacity 32 persons)





# Ground Floor – Adega (Fado night capacity 36 persons)











QUINTA DA BELLA VISTA

*Sintra*

# Palacio Pool

(Adults Only)





































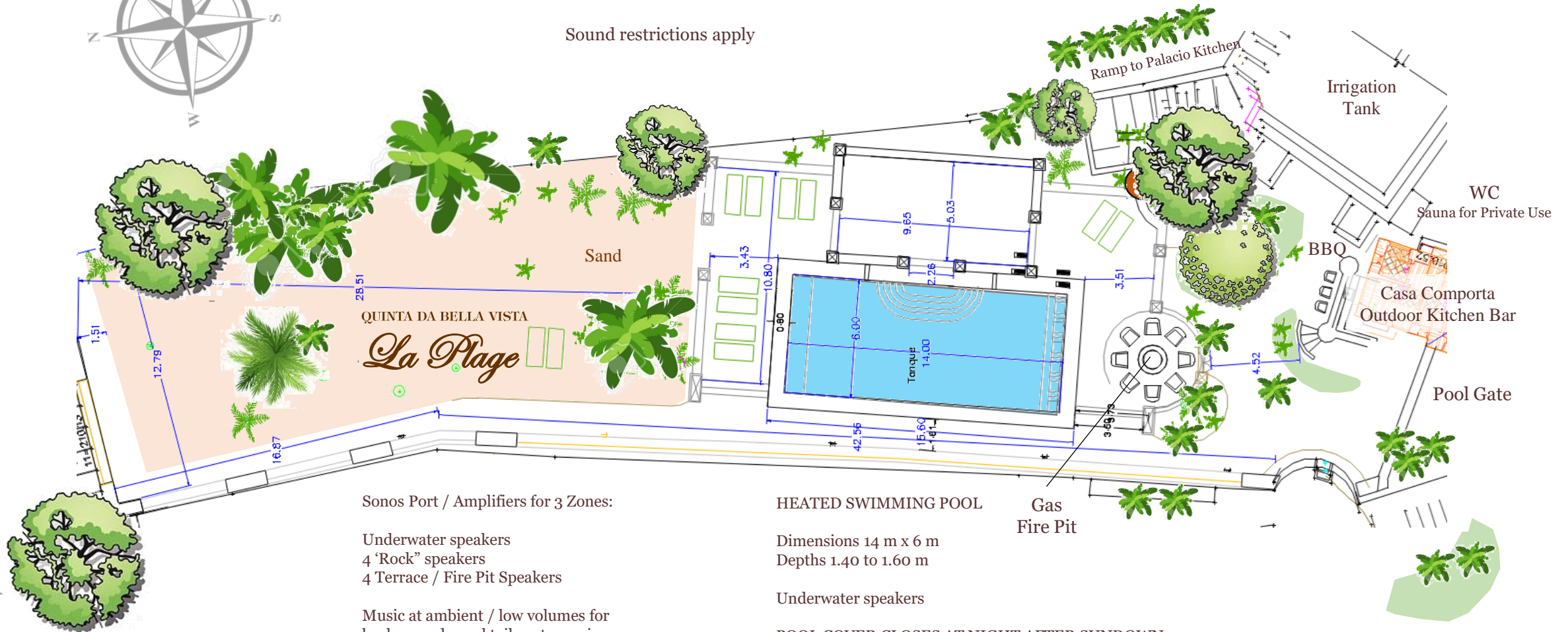


# The Palace Pool

- Sun Loungers: 10
- Adirondack Chairs around Fire Pit: 6
- Dining Tables: 2 for 12 persons
- Bar / Seats: 4 plus 4 at viewpoint

STRICTLY NO GLASS GLASSES IN POOL AREAS

Sound restrictions apply



Sonos Port / Amplifiers for 3 Zones:

- Underwater speakers
- 4 'Rock' speakers
- 4 Terrace / Fire Pit Speakers

Music at ambient / low volumes for background - cocktail party music

Sound restrictions apply

HEATED SWIMMING POOL

Dimensions 14 m x 6 m  
 Depths 1.40 to 1.60 m

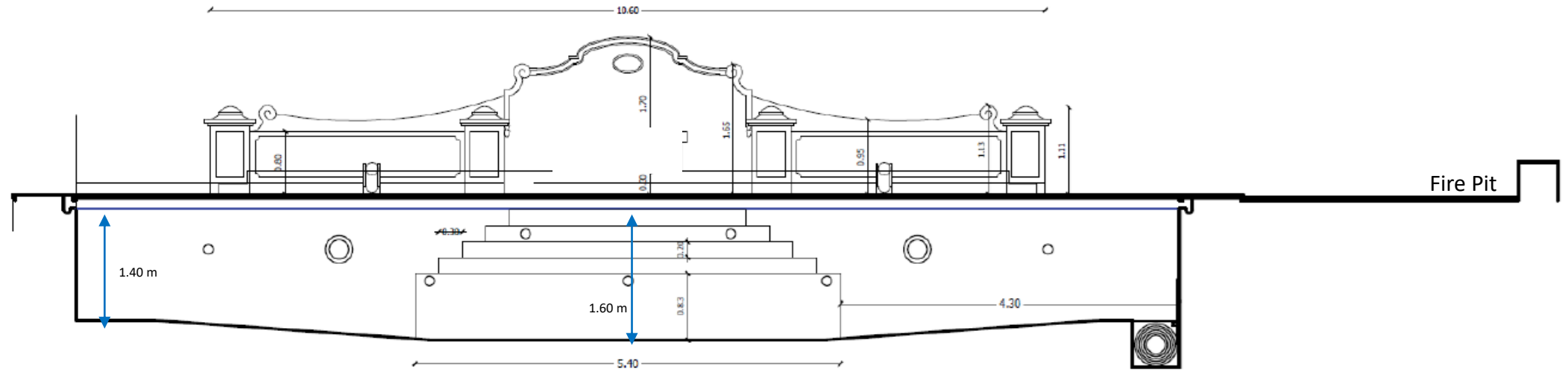
Underwater speakers

POOL COVER CLOSSES AT NIGHT AFTER SUNDOWN

NO SWIMMING AT NIGHT



# The Palace Pool







QUINTA DA BELLA VISTA

*Sintra*

# The Villas Pool





QUINTA DA BELLA VISTA

*Sintra*

## The Villas Pool Area

This area can host an evening event. Our outdoor sound system provides for a selection of music to fill the background while our uplights illuminate the chestnut tree gracing the terrace overlooking the pool. Here, we have hosted some wonderfully elegant evenings.



Sun Loungers: 6

Lounge Chairs around Fire Pit: 4

Dining Tables:

1 round table for up to 10 persons at the Pool Terrace

1 round table for four persons under the Walnut Tree

1 long table under the Walnut Tree for up to 14/16

STRICTLY NO GLASS GLASSES IN POOL AREAS

NO SWIMMING AT NIGHT

Sound restrictions apply





QUINTA DA BELLA VISTA

*Sintra*

## The Villas Pool Area

Next to the pool, there is a gas-fired barbecue where a dinner for up to forty-eight people can be hosted in four rotundas of 1.83 m diameter, with 12 persons each.





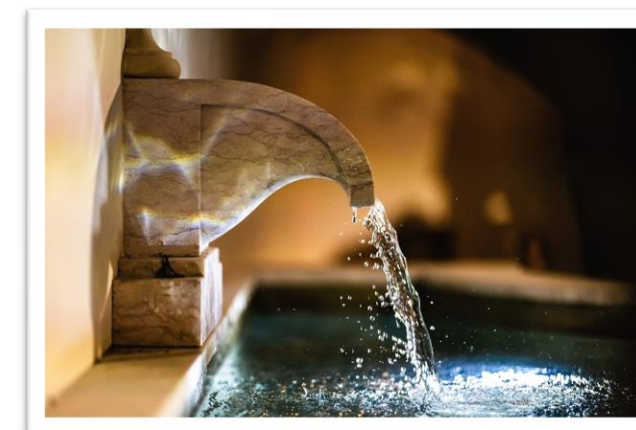


QUINTA DA BELLA VISTA

*Sintra*

## The Villas Pool

The 11 m x 5.50 m pool is where you and your close friends will spend the day before and after the wedding. Sun-drenched all day, filled with our own spring water, and with a running spring re-filling the water, heated by solar panels, and with underwater speakers, you will enjoy every minute of it!







QUINTA DA BELLA VISTA

*Sintra*

# Sound Restrictions Lighting & Curfews



Dear DJs and Sound Engineers,

According to Law no. 9/2007, 17 of January, sound levels must not exceed legal limits outside the property lines, with specific dB(A) limits set for different times of day.

Sound must remain within legal limits outside property lines; an event should essentially not be audible outside our Estate, a good location to confirm this being the Estate main gate; as per Law, between 8:00 pm and 11:00 pm the music level outside must not exceed 65 dB(A); and between 11:00 pm to 7 am the music level outside must not exceed 55 dB(A) at these property lines. This is the Law – there are no “special” exemptions throughout Portugal or in Sintra as often falsely communicated to Clients. For the avoidance of doubt, the Estate can furnish the Event Planner and/or Client with decibel readings.

#### GREENHOUSE & ADEGA:

Towards this end, after professional and registered sound measurements, the limit inside the Greenhouse has been set at max 88 dB(A) with short dynamic peaks of up to 98 dB(A) max.

To maintain these high levels inside the Greenhouse, all doors, windows, and the roof *must remain closed* when dance music is playing.

All music in the Greenhouse must be channeled through the fiscal-authorities pre-approved Advanced Sound Limiter by dBelectronics - Model CAP21. Tampering with the limiter may result in music being stopped by the Authorities or the Estate, with the forfeiture of the security deposit as a consequence.

**Curfew:** Music at the Greenhouse will be automatically lowered by our sound limiter by 10 dB(A) to max 78 dB(A) at 11.30 pm and will end at 12 midnight, sharp.

Should a louder dancing party be agreed in writing after dinner, this can be at the Adega of the Palacio with music

until 2.30 am the latest. Extra charges may apply as this is not automatically included in the agreement.

This 2.30 am limit is applicable strictly for the party continuing in the Palacio Adega after the hard limit at the Greenhouse of 12.00 midnight. Guests can move to the Adega before or during these times at the directions that shall be provided by the Event Planner staff (or catering staff under the direction of the Planner). Estate staff are not responsible for this move and the music will stop at the Greenhouse at midnight sharp or the Estate reserves the right to cut the power.

Placing any speakers or playing music outside the Adega on the Panorama Terrace is not permitted.

The Event Planner is responsible for maintaining noise levels within legal limits and must have full control and authority *throughout* the event.

Failure to comply with the restrictions may result in the forfeiture of the security deposit and termination of the event.

The Estate maintains veto and control rights over sound volume and sub-base volume. The estate reserves the right to monitor and adjust sound levels during the event, and the supervisory entities may take precautionary measures, including interruption or cancellation of the event, “to avoid serious damage to human health.”

Please also be reminded that pursuant to Articles 26 and 27 of the RGN, during the occurrence of an event, the supervisory entities (i.e., the National Police or the GNR) may, at any time and in an unannounced way, adopt precautionary measures necessary for avoiding serious damage to human health, such as the interruption or cancellation of the Event.

The Estate is not liable for any loss incurred by the Client in case of event interruption or cancellation due to failure to comply with the sound and light restrictions or because of any interruption by authorities.

#### OUTDOORS MUSIC

No amplified sound in open areas except for wireless microphone and audio system provided *or pre-approved in writing* by the Estate and within the limits set herein by the Law.

Music played outdoors must be acoustic only and not amplified; certain exceptions may apply for small, floor-level instrument amps, one per band, one per location, and for limited duration (under one hour), please enquire. In general, the sound must be equivalent to a cocktail music played in the background, max 70 dB(A) near the source without dance sub-base.

Absolutely no percussion, live drums are permitted outdoors.

#### LIGHTING

A limited number of dance lighting will be permitted; the location of the Estate is in the boundaries of the UNESCO World Heritage National Park of Sintra, where light pollution is minimized, this is also the reason why street lighting does not exist on Rua Barbosa du Bocage.

As such, motorized (robotic) spotlights are not permitted to point upwards (more than horizontal) in the Greenhouse or in the open areas; strobe lights are not permitted at all.

Dress overall / garland lights, chandeliers, and other decorative static lighting installations are of course permitted.

For videos from prior events, please check here:





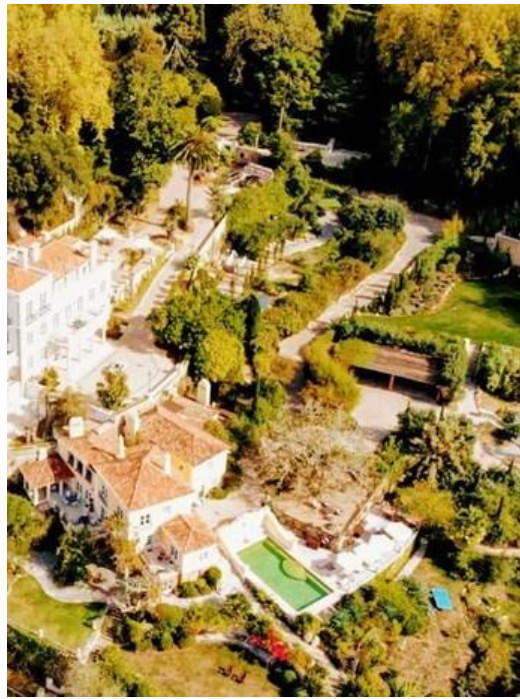


QUINTA DA BELLA VISTA

*Sintra*

# Description of Suites





QUINTA DA BELLA VISTA

*Antra*

# THE PALACIO

FOUR

LUXURIOUS SUITES

&

*A 'ONCE IN A LIFETIME'*

*ROYAL SUITE & LOUNGE*

ATLANTIC OCEAN &

SUNSET VIEWS

HEATED POOL

OUTDOOR SEATING

ALFRESCO DINING

BBQ

GAS FIREPIT

GARDENS





QUINTA DA BELLA VISTA

*Antra*

# THE PALACIO

## GARDEN SUITE

KING-SIZE BED

SPACIOUS SUITE WITH  
EN-SUITE BATHROOM  
SHOWER, BIDET

GARDEN VIEWS

WRITER'S DESK

ROUND DINING TABLE

GROUND LEVEL

SLEEPS TWO

CAN FIT SINGLE FOLDOUT BED  
EXTRA CHARGES APPLY





QUINTA DA BELLA VISTA

*Antra*

# THE PALACIO

## HERITAGE SUITE

KING-SIZE BED

SPACIOUS SUITE WITH  
EN-SUITE BATHROOM  
BATHTUB & SHOWER, BIDET

ATLANTIC OCEAN SUNSET AND  
MONSERRATE PALACE VIEWS

PRIVATE BALCONY

WRITER'S DESK

GROUND LEVEL

SLEEPS TWO





QUINTA DA BELLA VISTA

*Antra*

# THE PALACIO

## ORIENT SUITE

TWIN SINGLE BEDS  
(120 cm wide)

SPACIOUS SUITE WITH  
EN-SUITE BATHROOM WITH A VIEW  
SHOWER, BIDET

ATLANTIC OCEAN SUNSET AND  
MONSERRATE PALACE VIEWS

PRIVATE BALCONY

WRITER'S DESK

GROUND LEVEL

SLEEPS TWO





QUINTA DA BELLA VISTA

*Antra*

# THE PALACIO

## SHERLOCK'S SUITE

KING SIZE BED

SPACIOUS SUITE WITH  
EN-SUITE BATHROOM  
BATHTUB & SHOWER, BIDET

MOUNTAIN SUNRISE VIEWS

PRIVATE BALCONY

WRITER'S DESK

UPPER LEVEL

SLEEPS TWO





QUINTA DA BELLA VISTA

*Sintra*

# THE PALACIO

## ROYAL SUITE

EMPEROR SIZE BED

SPACIOUS SUITE WITH STUNNING 180°  
ATLANTIC OCEAN SUNSET,  
MONSERRATE PALACE, AND  
VALLEY AND SINTRA HILLS VIEWS

PRIVATE BALCONY

PRIVATE LOUNGE ROOM

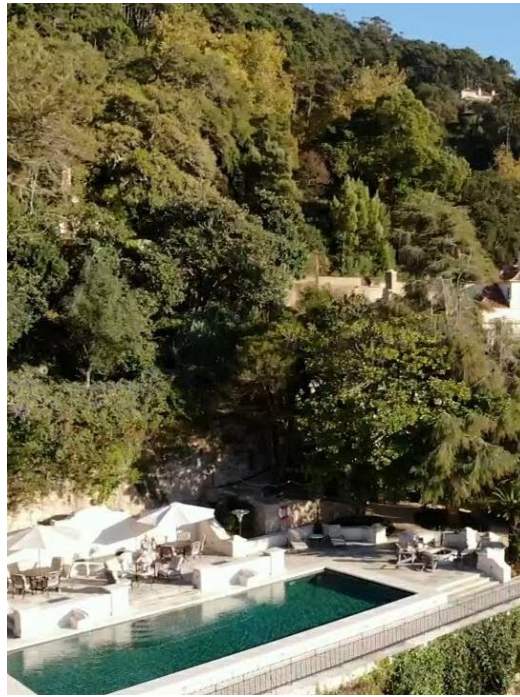
KITCHENETTE

EN-SUITE BATHROOM WITH  
OVERSIZED STONE BATH  
WITH RAINFOREST SHOWER &  
SECOND SEPARATE SHOWER

WRITER'S DESK

UPPER LEVEL





QUINTA DA BELLA VISTA

*Antra*

# THE PALACIO

PALACIO POOL

&

*La Plage*

STRICTLY ADULTS-ONLY AREA

BEACH INSPIRED LIVING

HEATED POOL

TEN SUN LOUNGE BEDS

SEATING FOR TWENTY-SIX

GAS-FIRED FIRE PIT

BBQ

LA PLAGE: OUR SANDY BEACH AREA





QUINTA DA BELLA VISTA

*Antra*

# CASA COMPORTA

## OCEAN MIST SUITE

KING SIZE BED

ATLANTIC OCEAN SUNSET,  
PALACIO MONSERRATE AND  
VALLEY VIEWS

PRIVATE ACCESS

SPACIOUS BATHROOM WITH  
SHOWER AND BIDET

WRITER'S DESK

UPPER LEVEL

SLEEPS TWO

SOFA BED CAN SLEEP TWO  
CAN HAVE ACCESS TO PALACIO POOL  
EXTRA CHARGES MAY APPLY





QUINTA DA BELLA VISTA

*Antra*

# CASA COMPORTA

## SEA BREEZE SUITE

QUEEN SIZE BED

ATLANTIC OCEAN SUNSET,  
MONSERRATE PALACE AND  
VALLEY VIEWS

PRIVATE ACCESS

BATHROOM WITH  
BATHTUB & SHOWER, BIDET

UPPER LEVEL

SLEEPS TWO

CAN HAVE ACCESS TO PALACIO POOL  
EXTRA CHARGES APPLY





QUINTA DA BELLA VISTA

*Antra*

# THE VILLAS

VILLA MONSERRATE  
VILLA CAMELIA

SIX SUITES & ONE BEDROOM

ATLANTIC OCEAN &  
SUNSET VIEWS

POOL  
OUTDOOR SEATING  
ALFRESCO DINING  
BBQ  
FIREPIT  
GARDENS





QUINTA DA BELLA VISTA

*Antra*

# THE VILLAS

## VILLAS POOL

CHILDREN ALLOWED  
UNDER ADULT SUPERVISION

ATLANTIC & VALLEY SUNSET VIEWS

SIX SUN LOUNGE BEDS

SEATING FOR TWENTY-SIX

WOOD-FIRED FIRE PIT  
(Restrictions apply)

GAS FIRED BBQ

AL FRESCO DINING UNDER OUR  
MAJESTIC WALNUT TREE FOR 16 + 4

AL FRESCO DINING AT THE LOWER  
LEVER ROUND TABLE FOR 8





QUINTA DA BELLA VISTA

*Antra*

# VILLA MONSERRATE

## EXPLORER SUITE

KING SIZE BED

SPACIOUS SUITE WITH STUDY

ATLANTIC OCEAN SUNSET,  
MONSERRATE PALACE, AND  
VALLEY VIEWS

GARDEN ACCESS

PRIVATE OUTDOOR LOUNGE AREA

EN-SUITE BATHROOM WITH OVERSIZED  
DOUBLE SHOWER

WRITER'S DESK

SLEEPS TWO

CAN FIT SINGLE FOLDOUT BED  
EXTRA CHARGES APPLY





QUINTA DA BELLA VISTA

*Antra*

# VILLA MONSERRATE

## MONSERRATE SUITE

QUEEN SIZE BED

ATLANTIC OCEAN SUNSET,  
MONSERRATE PALACE, AND  
VALLEY AND MOUNTAIN VIEWS

PRIVATE ACCESS

EN-SUITE BATHROOM WITH  
FREESTANDING BATHTUB & SHOWER

WRITER'S DESK

FRENCH BALCONY

UPPER LEVEL – SLEEPS TWO





QUINTA DA BELLA VISTA

*Antra*

# VILLA MONSERRATE SHAMBALA SUITE

KING SIZE BED

FIREPLACE

ATLANTIC OCEAN SUNSET,  
MONSERRATE PALACE, AND  
VALLEY VIEWS

PRIVATE ACCESS

PRIVATE OUTDOOR LOUNGE AREA

EN-SUITE BATHROOM WITH  
FREESTANDING BATHTUB & SHOWER  
AND  
SEPARATE SHOWER

WRITER'S DESK

FRENCH BALCONY

UPPER LEVEL – SLEEPS TWO





QUINTA DA BELLA VISTA

*Antra*

# VILLA CAMELIA

## SAFARI SUITE

QUEEN SIZE BED

GARDEN & POOL VIEWS

PRIVATE ACCESS

KITCHENETTE

EN-SUITE BATHROOM WITH  
RAINFOREST SHOWER

WRITER'S DESK

GROUND LEVEL

SLEEPS TWO





QUINTA DA BELLA VISTA

*Antra*

# VILLA CAMELIA

## LAVENDER SUITE

QUEEN SIZE BED

GARDEN AND POOL VIEWS

PRIVATE ACCESS

EN-SUITE BATHROOM WITH  
BATHTUB & SHOWER

WRITER'S DESK

UPPER LEVEL – SLEEPS TWO





QUINTA DA BELLA VISTA

*Sintra*

# VILLA CAMELIA

## JASMINE SUITE

QUEEN SIZE BED

GARDEN AND SUNRISE  
SINTRA HILLS VIEWS

PRIVATE BALCONY

EN-SUITE BATHROOM WITH  
SHOWER AND BIDET

UPPER LEVEL – SLEEPS TWO





QUINTA DA BELLA VISTA

*Antra*

# VILLA CAMELIA

## LITTLE PRINCE SUITE

QUEEN SIZE BED

GARDEN AND POOL VIEWS

CONNECTS TO THE LIVING ROOM

BATHROOM WITH  
SHOWER AND BIDET

WRITER'S DESK

GROUND LEVEL

SLEEPS TWO

LIVING ROOM SOFA BED CAN SLEEP  
TWO

EXTRA CHARGES MAY APPLY



Floor	Name of Suite	Ensuite Bathroom	Bathtub	Shower	Private Access	Pull-out sofa/bed	Fireplace	Kettle	Nespresso Machine	Approximate Area m2	View	TV	Remarks
<b>The Palacio</b>													
Floor 3	Royal Suite	Y	Y	Y	N	N	Y	Y	Y	102	NWS	Y	Owners' Suite
	Sherlock's Suite	Y	Y			N	N	Y	Y	26.3	E	N	Balcony with sun umbrella, small round table and two chairs
Floor 2	Staff Studio	Y		Y	Y	Y					Courtyard		Reserved for Palacio Staff
Floor 1	Heritage Suite	Y	Y		N	N	N	Y	Y	24	WS	N	Balcony with dining round table and two chairs
	Garden Suite	Y	N	Y	N	N	N	Y	Y	36	S - Garden	N	
	Orient Suite	Y	N	Y	N	N	N	Y	Y	30	W	N	Balcony with dining round table and two chairs
<b>Casa Comporta (Palacio's Poolhouse Annex)</b>													
Floor 2	Ocean Mist Suite	Y	N	Y	Y	Y	N	Y	Y	38	W	N	Living Room has kitchen-bar and TV lounge area (may be at extra charge)
	Sea Breeze Suite	Y	Y		Y	N	N	Y	Y	21	W	N	
<b>Villa Monserrate</b>													
Floor 3	Shambala Suite	Y	Y	Y	Y	N	Y	Y	Y	30	W	N	
	Monseratte Suite	N	Y	Y	N	N	N	Y	Y	21	W	N	
Floor 2	Teepee Room	N	N	Y	N	N	N	Available	Available	18	WS	N	2 sets of bunk beds of 90 x 200 cm can sleep four children or four adults.
Floor 1	Explorer Suite	Y	N	Y	Y	N	N	Y	Y	59	WS	N	Double shower, this is where owners were before moving to the Palacio, can be available with living room with kitchen, dining, and home cinema as a separate one bedroom apartment with own access.
<b>Villa Camelia</b>													
Floor 2	Jasmin Suite	Y	N	Y	Y	N	N	Y	N	20	ES	N	Balcony
	Lavender Suite	Y	Y		Y	N	N	Y	Y	22	SE	N	
Floor 1	The Little Prince	N	N	Y	N	N	N	N	N	14	SE	N	"Kids" room - bathroom separated by corridor leading to kitchen
	Safari Suite / Studio	Y	N	Y	Y	N	N	Y	Y	29	SE	Y	Completely independent studio





**QUINTA DA BELLA VISTA**

*Sintra*

**[www.QuintadaBellaVista.com](http://www.QuintadaBellaVista.com)**

**[office@quintadabellavista.com](mailto:office@quintadabellavista.com)**

