

EVENTS GUIDEBOOK

Last update: May 1, 2023



QUINTA DA BELLA VISTA

Sintra



Welcome!

Welcome to the former property of Sir Arthur Conan Doyle, and his son Adrian.

Quinta da Bella Vista was former property of the famous British writer and father of “Sherlock Holmes,” Sir Arthur Ignatius Conan Doyle (22 May 1859 – 7 July 1930), who lived with his family starting in 1890. Annette, the sister of Sir Arthur and his youngest son, Adrian, were almost permanent residents here in the early 1950's. Local legend has it that “The Hounds of Baskerville” were in fact inspired during Sir Arthur’s stay in Quinta da Bella Vista.

Quinta da Bella Vista was a regular gathering spot for celebrities of the time such as Sir Francis Cook, the First Viscount of Monserrate (and former owner of Palacio Monserrate and of Quinta da Bella Vista), the South African poet Roy Campbell, the American actress Gloria Swanson, and Pierre Schlumberger, a French oil tycoon and heir to one of the world's greatest fortunes.

Adrian was a real playboy and a reputed hunter, and he continued authoring some Sherlock Holmes books after his father's death at Quinta da Bella Vista. He was also a painter and was often seen painting at the tower of the Palacio, which served as his studio because of the abundance of light from all directions.

The gardens of Quinta da Bella Vista provided the lemons for the famous cocktails of the glamorous Ritz Hotel of Lisbon.



QUINTA DA BELLA VISTA



The Palacio, Villa Camelia, Villa Monserrate, Casa Comporta, and Casa Bohemia can also be used as separate properties, with the possibility of using Casa Bohemia as a romantic “bungalow” experience. Casa Bohemia is not included in Estate rentals.

Quinta da Bella Vista features two swimming pools with underwater sound system, one regular size 11 x 5.50 m, and the heated Palacio Pool of 14 x 6 m, both of which are surrounded by very comfortable lounging areas with unhindered expanded ocean sunset views and with cozy fire pits and Adirondack chairs.

Our Lawn and Garden Theater, our 350 square meter Victorian Greenhouse, and our Adega in the Palacio can host special events of small groups of friends all the way up to 250 - 300 guests (and 450 guests for a performance at our Garden Theater). These events can be performances, weddings, birthday celebrations, corporate retreats, yoga sessions, outdoor movie nights, culinary experiences, New Year’s celebrations, and others.

A total of fifteen well-equipped bedroom Suites and Residences can accommodate up to 36 lucky guests with amenities such as heated floors in the bathrooms, Sonos sound systems throughout, and high-speed internet, and security coverage.

Our Vegetable Garden and Animal Farm provide fresh milk, eggs, organic natural vegetables, and fruit.

Further, six well-equipped kitchens, three outdoor grill areas, and other possibilities to cater to events abound and will offer guests plentiful of gastronomic choices.



QUINTA DA BELLA VISTA

The Palacio offers a unique experience with four stunning bedroom Suites and a splendidly designed double volume Royal Suite and Grand Bathroom. Numerous lounges with their fireplaces including our coveted Cigar Lounge, the Palacio Kitchen with its al-fresco dining courtyard, and the Adega, our wine cellar tavern to host special dinner events, make the Palacio a one-of-a-kind experience.

Casa Comporta, the adjoining poolhouse, offers another two suites and a living room and open bar kitchen in a beachouse ambience.

Our secluded Palacio Pool and Bar and our *“La Plage”*, our own beach with imported sand, all bathed in ocean and sunset views, and complete with a gas firepit surrounded by Adirondack teak chairs, call for magnificently leisurely days and enjoyable evenings.



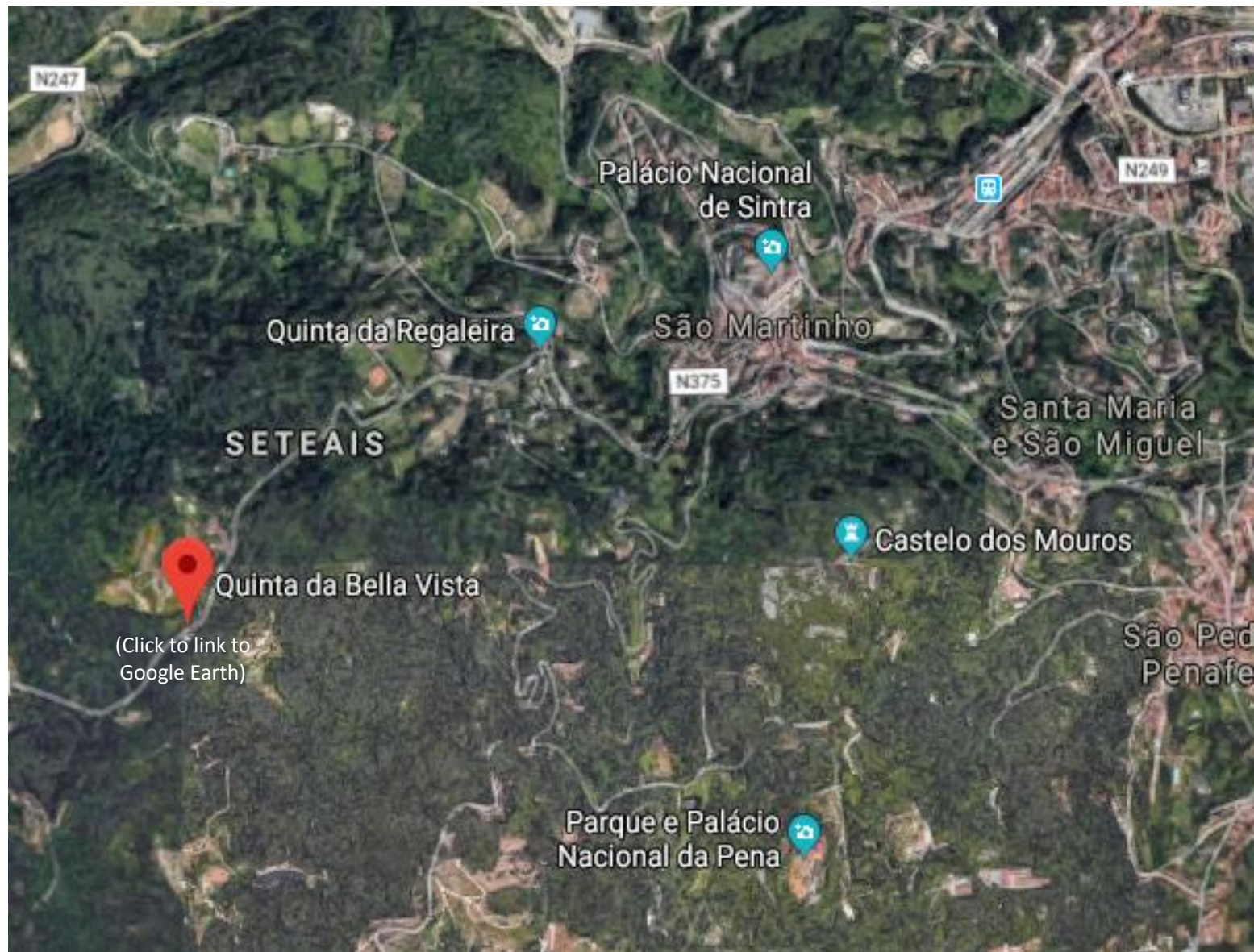
QUINTA DA BELLA VISTA



QUINTA DA BELLA VISTA

A Magical Location

The Sintra Hills (Portuguese: Serra De Sintra), is a mountain range in western Portugal. Its highest point at 529 meters [1736 ft.] is near the enchanting UNESCO world-heritage village of Sintra. The range covers about 16 km (10 miles) from the resort town of Sintra to Cabo da Roca (Cape Roca) on the Atlantic Ocean. It was known in the ancient world as Lunae Mons (mountains of the Moon) and was the legendary retreat of Diana the Huntress (known as Cynthia to the Romans, hence “Çintra”).





QUINTA DA BELLA VISTA



Set on Rua Barbosa du Bocage, the old road of Sintra that links most of the palaces, your guests will pass in front of some of the most noteworthy sites of Sintra, such as the Sintra National Palace, and the Quinta da Regaleira, and the Palacio Seteais, as they weave their way through to the Palace of Monserrate.

Possibly the oldest Eucalyptus tree in Sintra is gracing our Quinta's gate, the start of a 250-metre-long cobblestone driveway.





QUINTA DA BELLA VISTA

The Light & The Views

A superb south-west orientation gives our Quinta the name “Bella Vista.” A captivating warm light bathes our land while you watch the sun set in the far ends of the Atlantic Ocean.

Creating memories that will last forever, the views in the evenings are enhanced by the nicely illuminated Palacio Monserrate in the foreground.





QUINTA DA BELLA VISTA

The Lush Nature

Our Quinta has been privileged to have some very rare trees and plants that grow in the special microclimate of Sintra. These include a number of Monkey Puzzle trees (native to Chile and Argentina only), Sequoias, and many colorful tropical flowers.





QUINTA DA BELLA VISTA

The Monseratte Pool Grounds

This area can host an evening event. Our outdoor sound system provides for a selection of music to fill the background while our uplights illuminate the chestnut tree gracing the terrace overlooking the pool. Here, we have hosted some wonderfully elegant evenings.

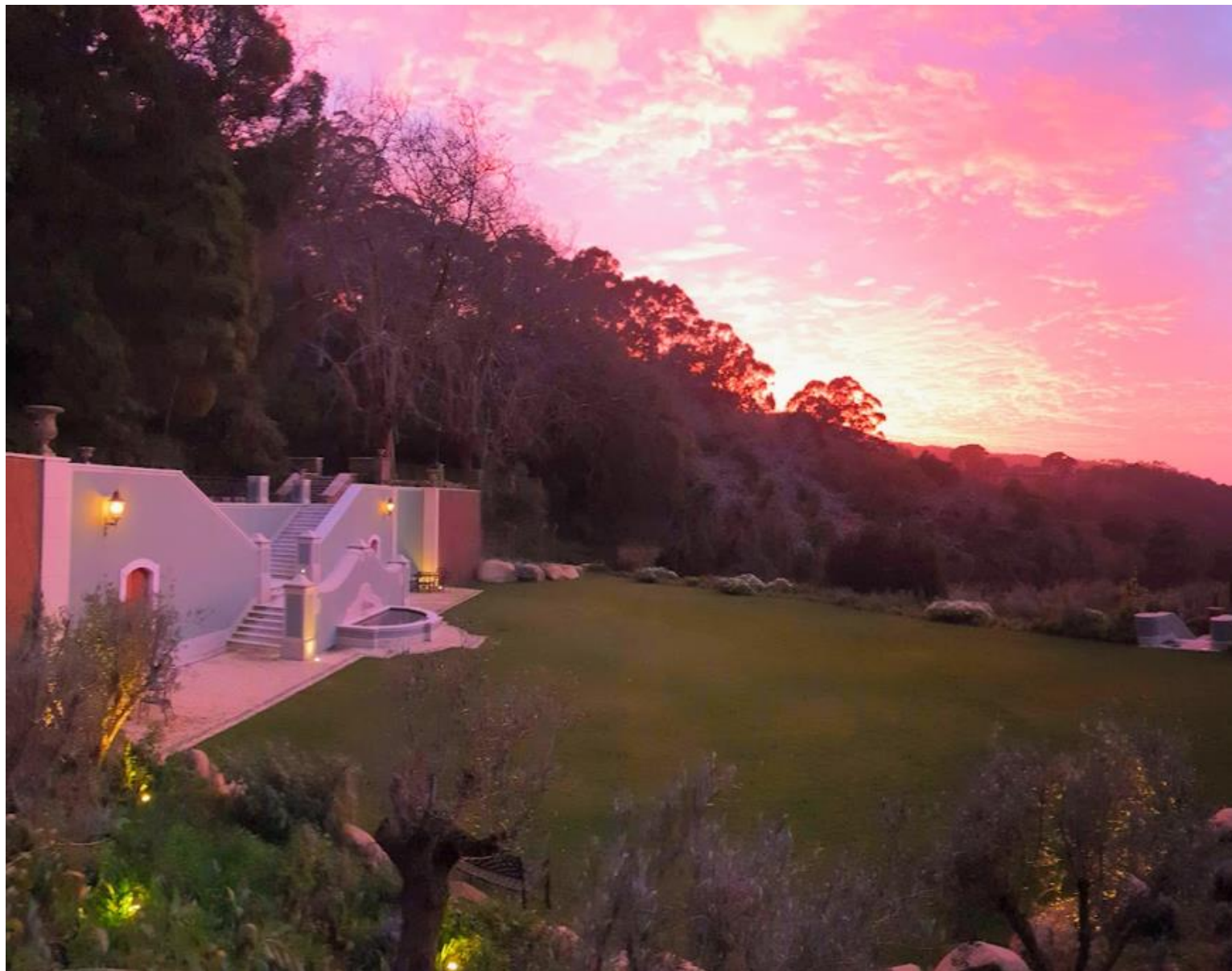




QUINTA DA BELLA VISTA

The Lawn

Big enough to host events for up to 500 persons, this area makes for the perfect site for an amazing party.





QUINTA DA BELLA VISTA

The Villas

Exquisitely decorated, tastefully matched, the interiors provide for a cozy country feeling which is blended with elegance and timelessness.

Wooden ceiling paneling, and a warm décor, with fast internet and Sonos music piped in, and bathrooms with heated floors, all make for a comfortable stay.





QUINTA DA BELLA VISTA

Shamballa Suite

With a fireplace and incredible views, this suite will be the perfect place to wake up after the party.

Soft indirect lighting, allows for unhindered views of the Atlantic Coast.





QUINTA DA BELLA VISTA

Monseratte Suite Bathroom

What better way to relax than taking a warm candlelit bath with scented bath salts? A romantic bathroom adds that special touch.





QUINTA DA BELLA VISTA
Sintra

The Grounds





QUINTA DA BELLA VISTA

Bathed in Sun

Enjoying an optimum south-west orientation, all the houses enjoy the best of light throughout the day. Sunrise comes a little later as the hills cover the east side.

The property is also protected from the strong north-northeasterly winds and the southerlies as it is hugged by the Sintra hills. Only strong westerlies can be felt.



QUINTA DA BELLA VISTA

Sintra



The Estate Grounds

Suites Distribution – Capacities & Amenities

Floor	Name of Suite	Ensuite Bathroom	Bathtub	Shower	Independent Access	Bed Size(s)	Pull-out sofa/bed	Nespresso	Safe	Area m2	View	Fireplace	Balcony	Remarks
The Palacio														
Floor 3	Royal Suite	Y	Y	Y	N	180 x 220	N	Kitchenette	Y	102	NWS	Y	Balcony	Owners' Suite with living room, kitchenette, large bathtub / shower
	Sherlock's Suite	Y	Y			180 x 200		Y	Y	26.3	E		Balcony	
Floor 1	Heritage Suite	Y	Y		N	180 x 200		Y	Y	24	WS		Balcony	
	Garden Suite	Y		Y	N	180 x 200		Y	Y	36	S - Garden			
	Orient Suite	Y		Y	N	2 x 120 x 200		Y	Y	30	W		Balcony	
Casa Comporta (Poolhouse Annex)														
Floor 2	Ocean Mist Suite	Y		Y	Y	180 x 200	Y	Y	Y	38	W			
	Sea Breeze Suite	Y	Y		Y	160 x 200		Y	Y	21	W			
Villa Monserrate														
Floor 3	Shambala Suite	N	Y	Y	Y	180 x 200		Y	Y	26.4	W	Y	French Windows / Courtyard	
	Monseratte Suite	N	Y	Y	N	160 x 200		Y	Y	24.9	W		French Windows	
Floor 2	The Teepee	N	N	Y	Y	4 x 90 x 200		Y		16			French Window	
Floor 1	Explorer Suite / Apartment	Y		Y	Y	160 x 200		Fully equipped kitchen	Y	106	WS		Garden Access	Former Owners' Suite of 46.5 m2, double shower, which if booked separately is included with living room and home cinema, fireplace, dining roundtable and kitchen as a separate apartment, with own access.
Villa Camelia														
Floor 2	Jasmin Suite	Y		Y	Y	160 x 200		Y	Y	14.6	ES		Balcony	Balcony
	Lavender Suite	Y	Y		Y	160 x 200		Y	Y	28.7	SE			
Floor 1	The Little Prince	N		Y	N	160 x 200	Y	Y	Y	12.3	SE			"Kids" room - bathroom with shower separated by corridor leading to kitchen
	Safari Suite / Studio	Y		Y	Y	160 x 200		Kitchenette	Y	22.8	SE		Garden Access	Completely independent studio



















QUINTA DA BELLA VISTA

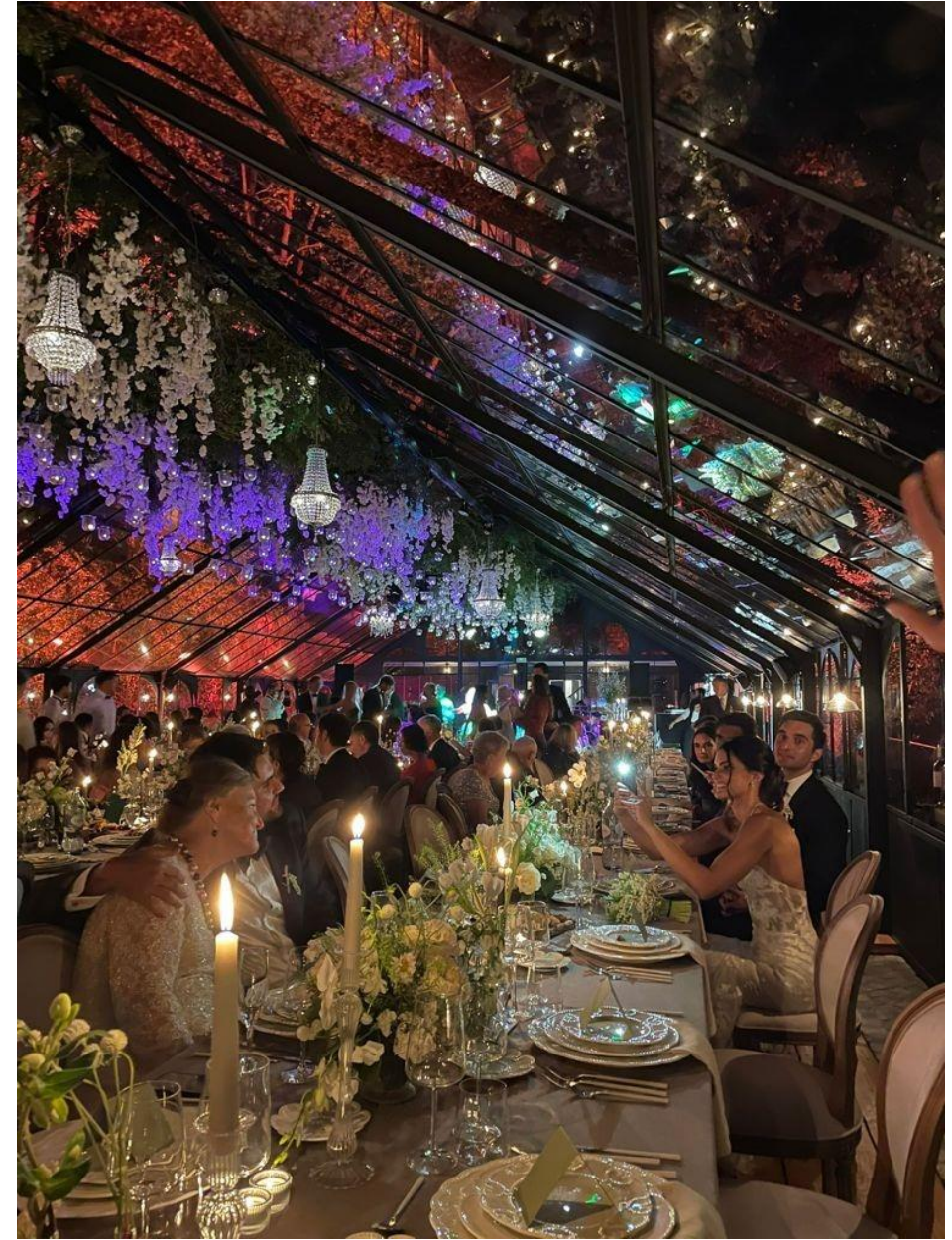
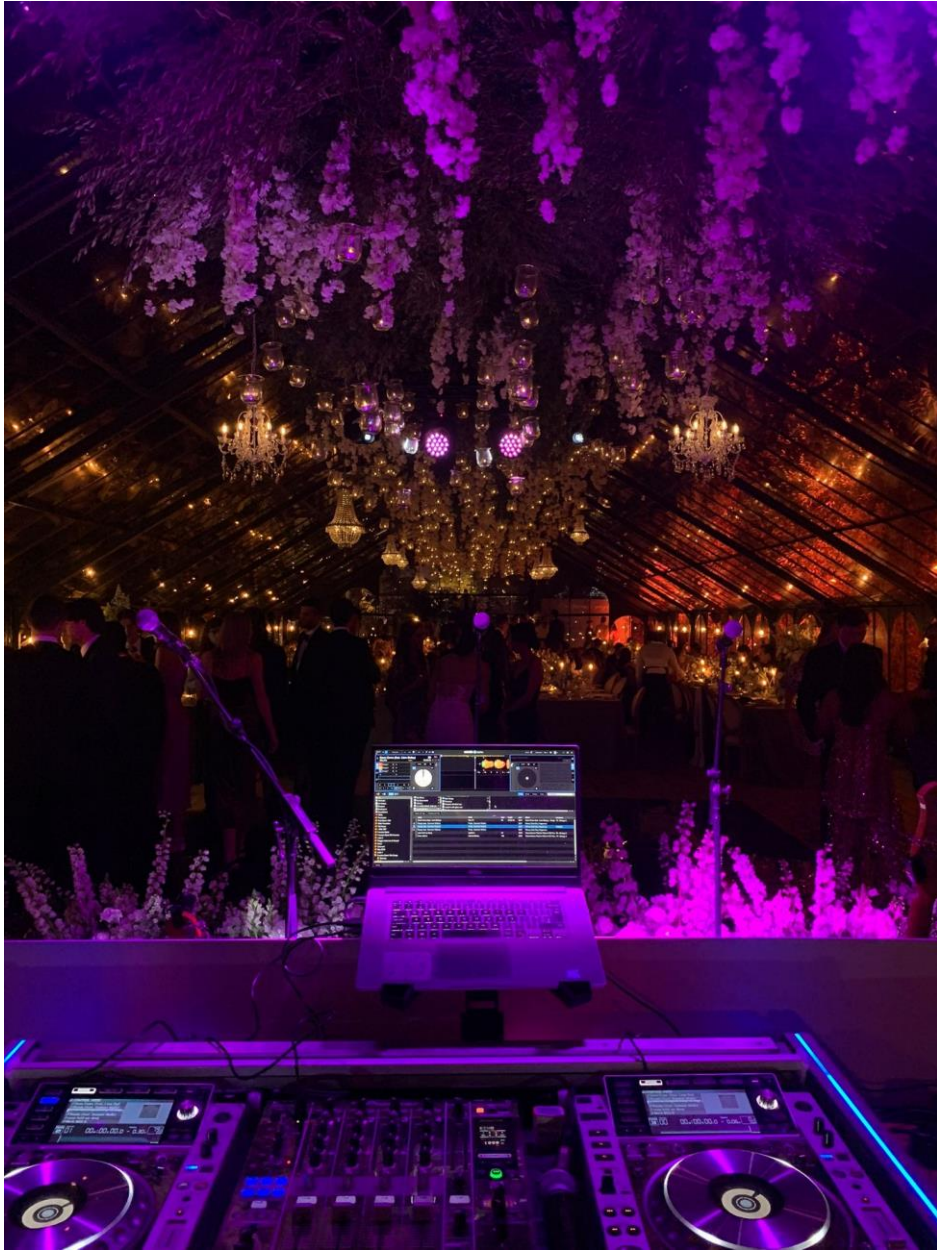
Sintra

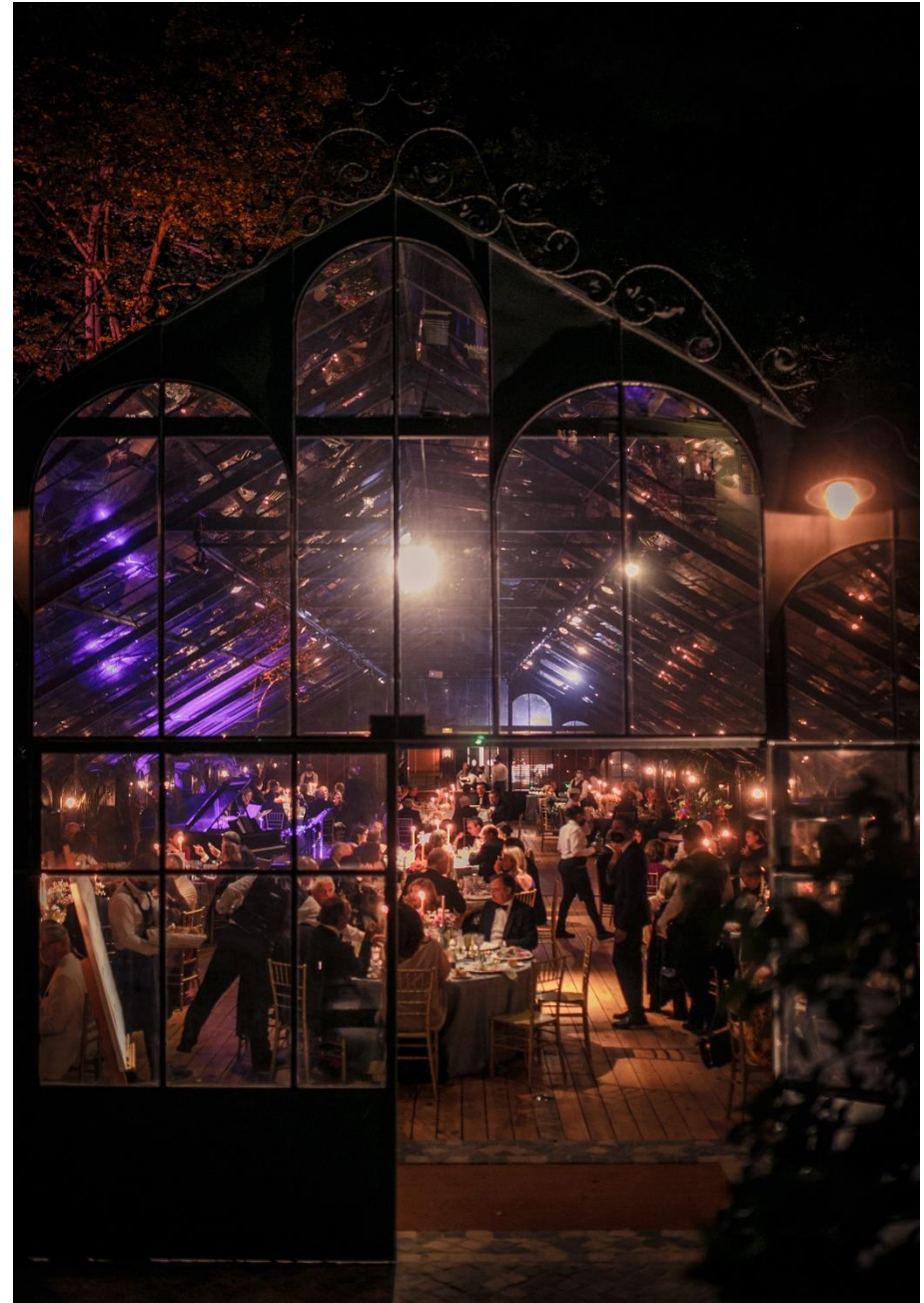
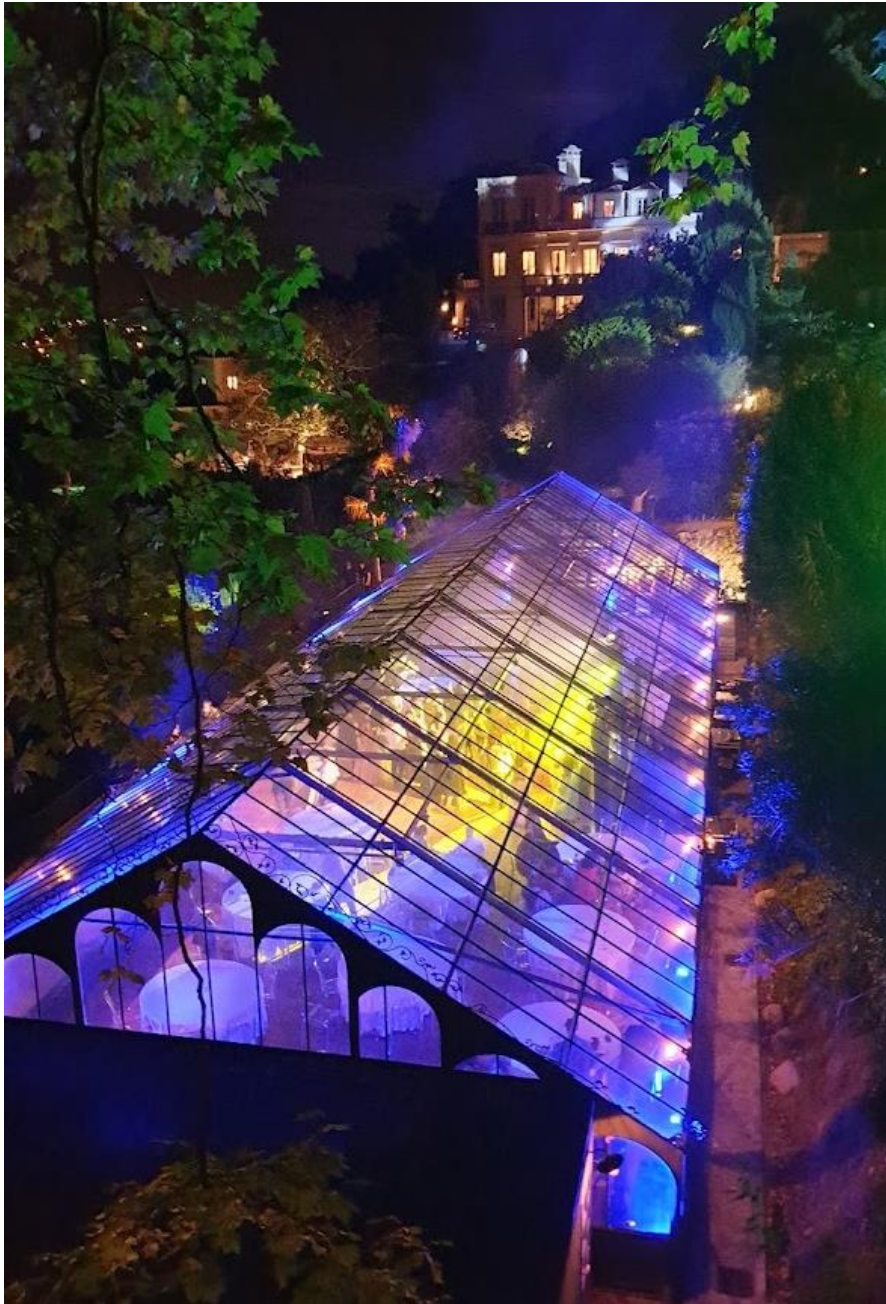
Victorian Greenhouse

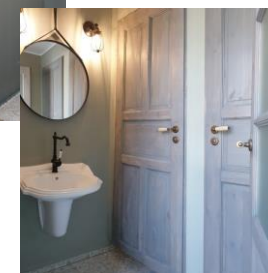
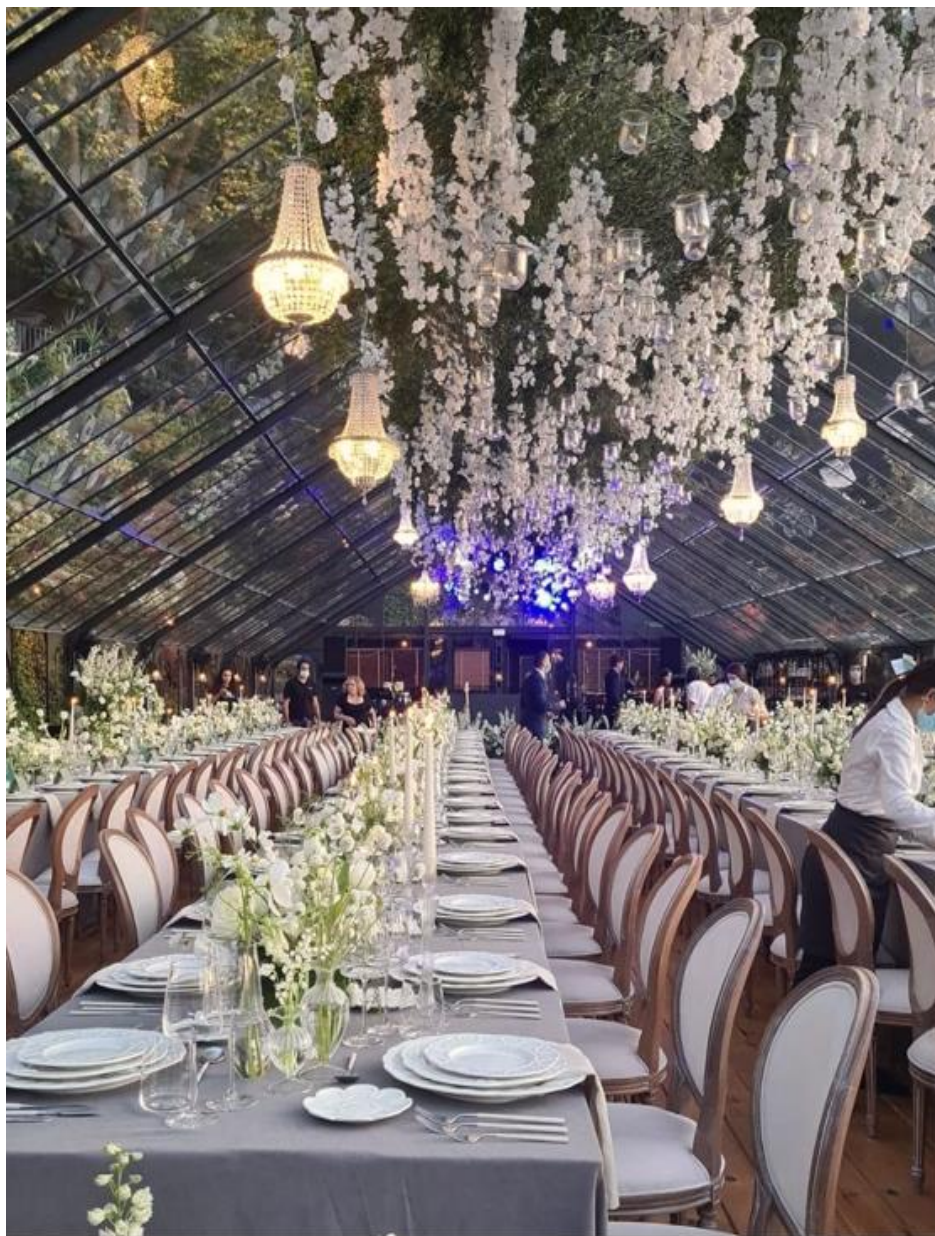


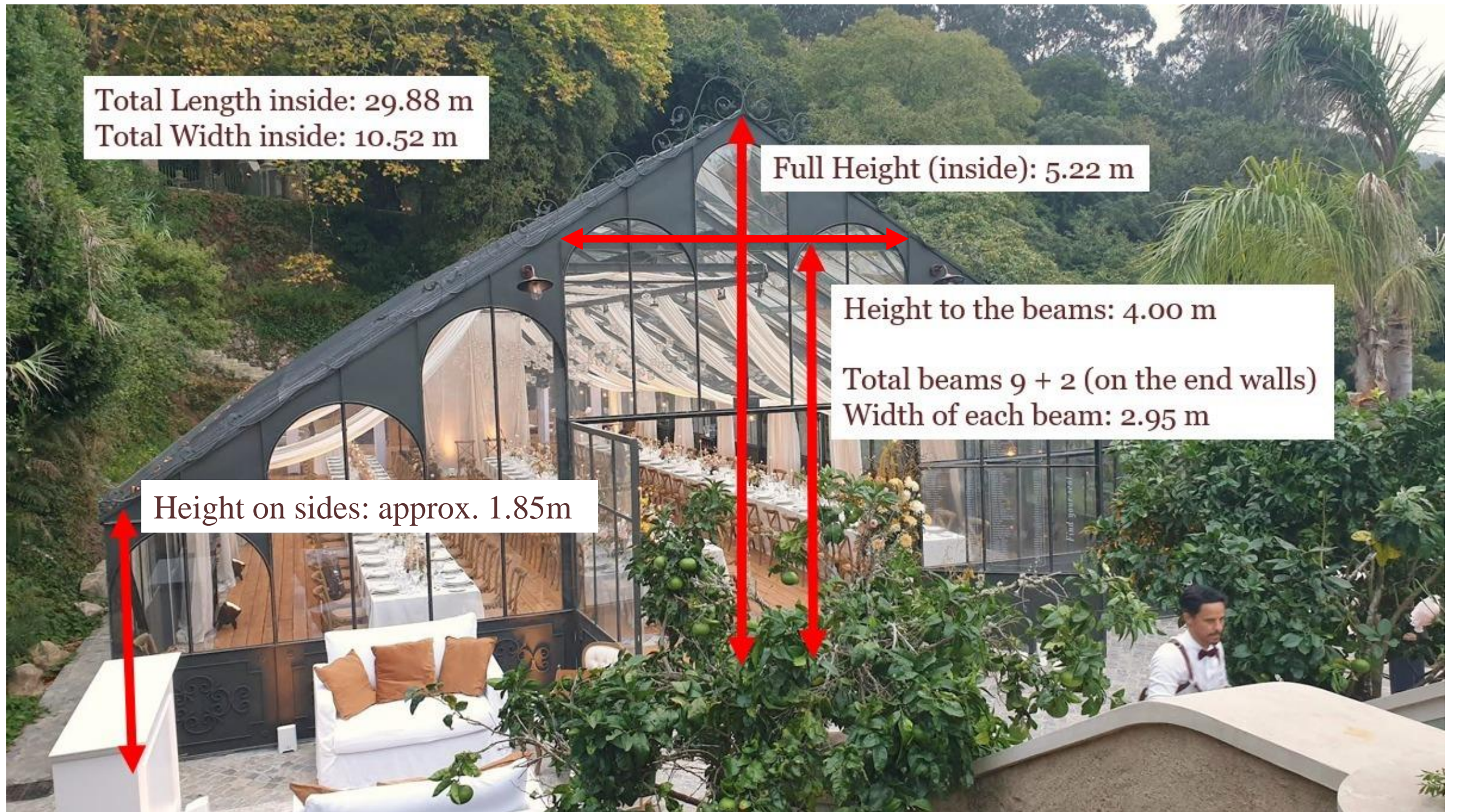




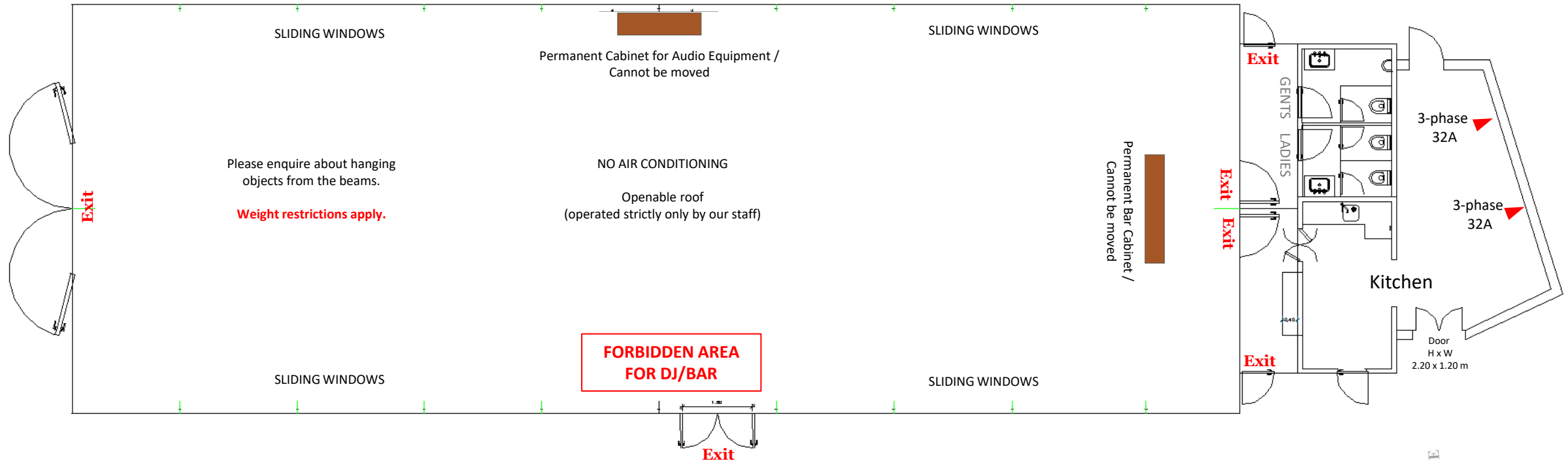








The Victorian Greenhouse



The dimensions of the Greenhouse are 30 m x 10.5 m.

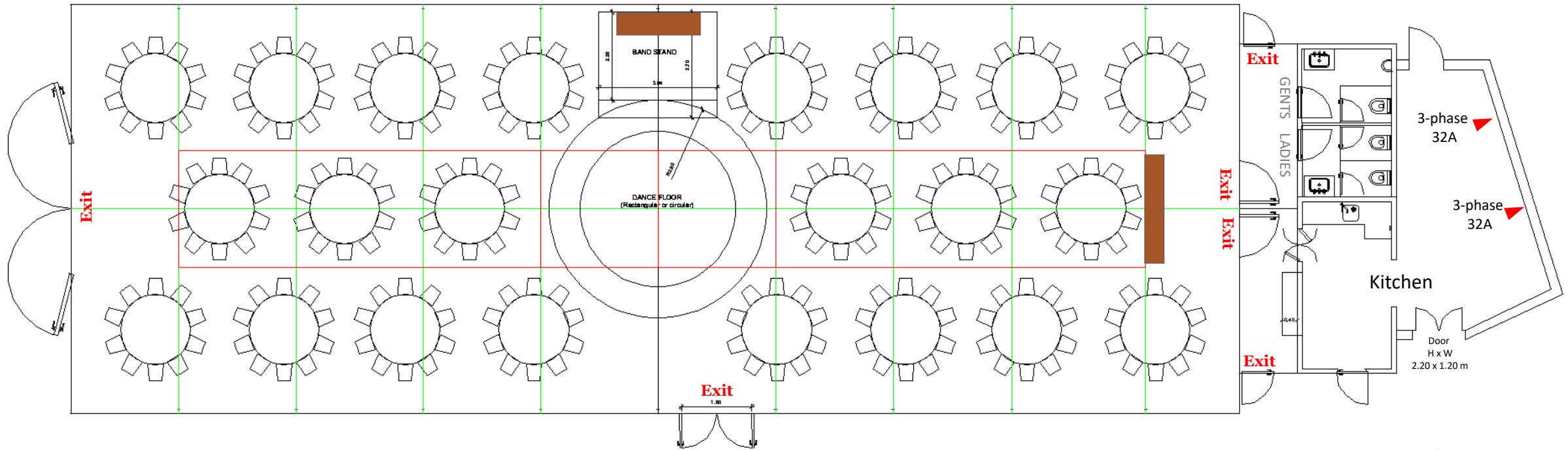
These do not include the kitchen, toilets, and corridor.

The net surface area is reduced at the center because of the furniture of the sound system and the bar in front of the kitchen and toilets.

Please consider **evacuation corridors towards the emergency exits** in case of fire, earthquake, or other reasons that may cause panic.



The Victorian Greenhouse



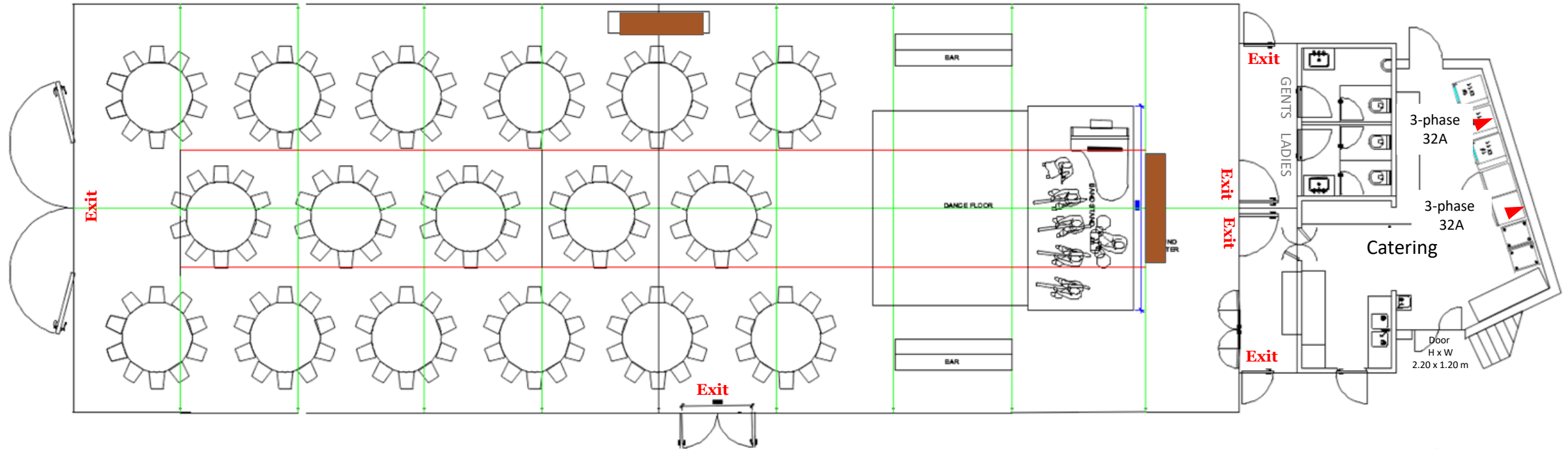
Maximum capacity for the Greenhouse is 26 round tables of 1.80 m diameter for 10 persons each or 260 persons or 312 persons with 12 persons per table.

The capacity is reduced to 22 round tables or 220 /264 persons if a dance floor is installed in the middle.
The dance floor can be round (diameter 5.60 m) or rectangular (4.50m x 4.50m).

There are bathrooms for ladies and gents at the back plus a kitchen with two 3-phase 32A electrical connections for food heaters and other catering equipment.



The Victorian Greenhouse



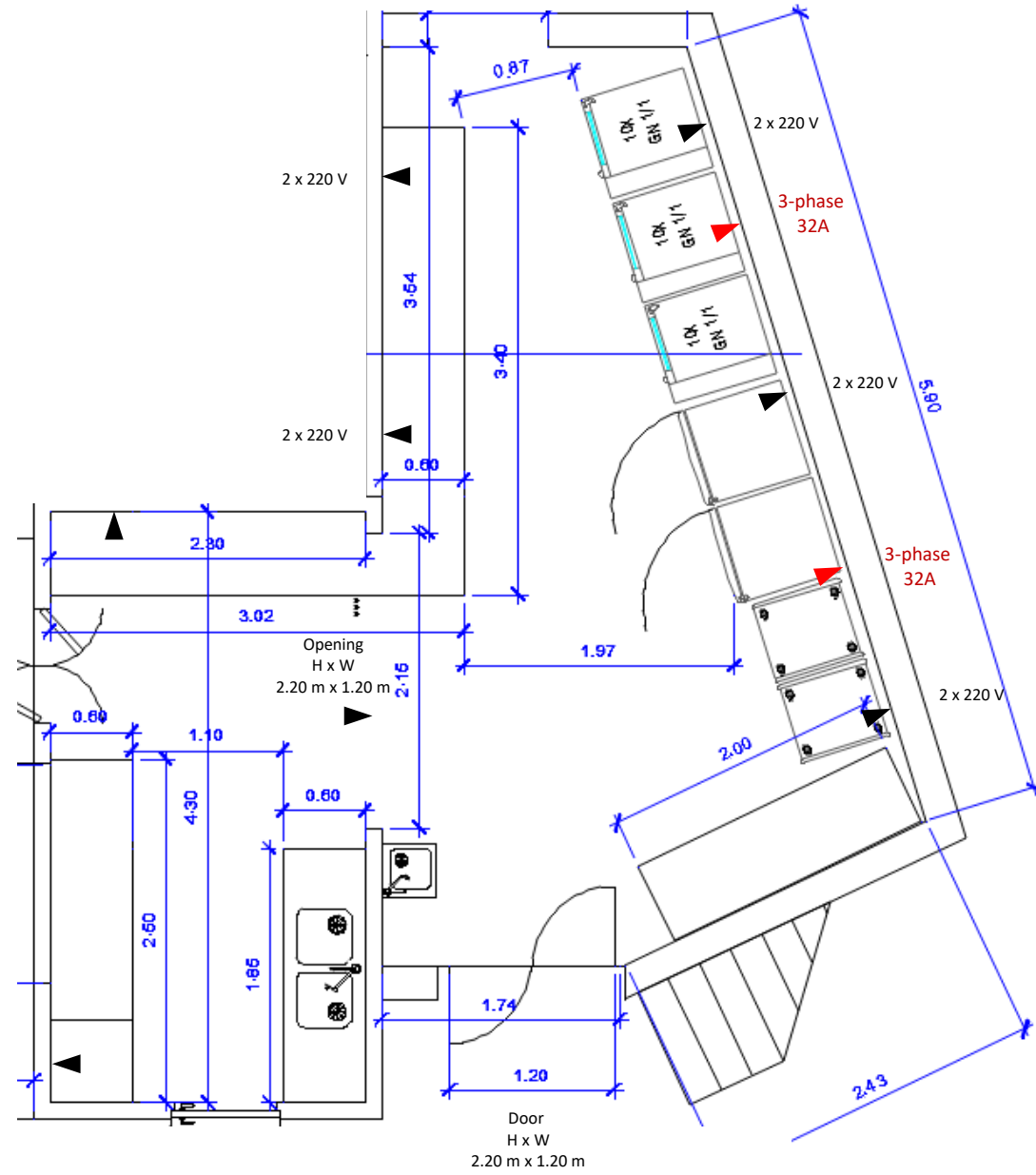
The capacity is reduced to 17 round tables or 170 / 204 persons if a 7-person band stand dance floor is installed.
The dance floor in this case is 5.00 m x 4.00 m and the band stand is 2.70 m x 5.25 m

Please consider **evacuation corridors towards the emergency exits** in case of fire, earthquake, or other reasons that may cause panic.



The Victorian Greenhouse

Catering Space



The Victorian Greenhouse

Sound Restrictions & Curfew

Dear Guests,

According to Law no. 9/2007, 17 of January, sound levels must not exceed legal limits outside the property lines, with specific dB(A) limits set for different times of day.

Towards this end, after sound measurements, the limit inside the Greenhouse is set at max 88 dB(A) with short dynamic peaks of *up to 98 dB(A) max*.

The Greenhouse doors, windows, and the roof, must remain closed when dance music is playing.

The Estate maintains veto and control rights over sound volume and sub-base volume.

All music in the Greenhouse must be channeled through the fiscal-authorities pre-approved Advanced Sound Limiter by dBelectronics - Model CAP21. Tampering with the limiter may result in music being stopped by the Authorities or the Estate, with the forfeiture of the security deposit as a consequence.

Curfew: Music at the Greenhouse will be automatically lowered by our sound limiter by 10 dB(A) to max 78 dB(A) at 11.30 pm and **will end at 12 midnight, sharp**.

The Event Planner is responsible for maintaining noise levels within legal limits and must have full control and authority *throughout* the event, (or until the last person has left).

Failure to comply with the restrictions may result in the forfeiture of the security deposit and termination of the event. The estate reserves the right to monitor and adjust sound levels during the event, and the supervisory entities may take precautionary measures, including interruption or cancellation of the event, to avoid serious damage to human health.

The Estate is not liable for any loss incurred by the Client in case of event interruption or cancellation due to failure to comply with the sound and light restrictions or because of intervention from authorities.

For videos from prior events, please check here:



The Victorian Greenhouse

Etiquette

Dear Guests,

When using the Greenhouse, please observe the following safety rules:

- **You are required to follow our strict NO-SMOKING policy.** Our wooden floor is grooved to allow the earth to breathe, the wood to expand and contract, and to diminish the echo and the sound levels in this open glass structure. Lit cigarettes and other flammable material may fall in the gaps and can cause a fire.
- **Absolutely no confetti permitted.** Confetti pedals may fall between the gaps or land on the wooden floor and trigger a fire, in combination with a cigarette or some other source of heat or fire. Further, confetti discolors and will stain the wooden floor.
- **Firework material of any kind is strictly prohibited.**
- Should confetti, cigarettes, cigars, or other possible flammable material be used and disposed on the floor in the Greenhouse, **you will be charged with the cost of the inspection of the space under the wooden planks and their removal plus damages.** Such an operation includes material and labor costs for the unmounting and refitting of the floor planks which can reach thousands of Euros.
- **Do not block exits.**
- **Kindly observe the sound and curfew limits.**

Not following the above guidelines may result in the forfeiture of the entirety of the security deposit and the possibility for damage claims.

The Victorian Greenhouse

Quinta's Basic Audio Equipment

DYNACORD Mixer Amplifier Powermate
1000

CROWN Xti Amplifier

Pioneer CDJ-100S CD Players

Mixing Console Pioneer DJM 300 S

Effects Console Pioneer EFX 500

JBL Speakers

Dynacord Speakers

Dynacord Speakers for reverb

Subwoofer

Wireless Microphone

PA SYSTEM with 10 Speakers

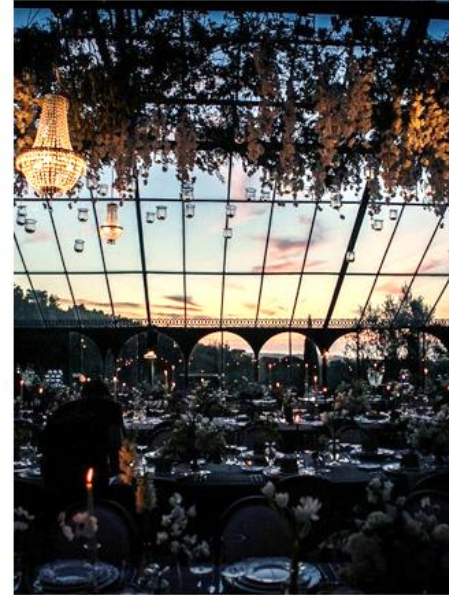
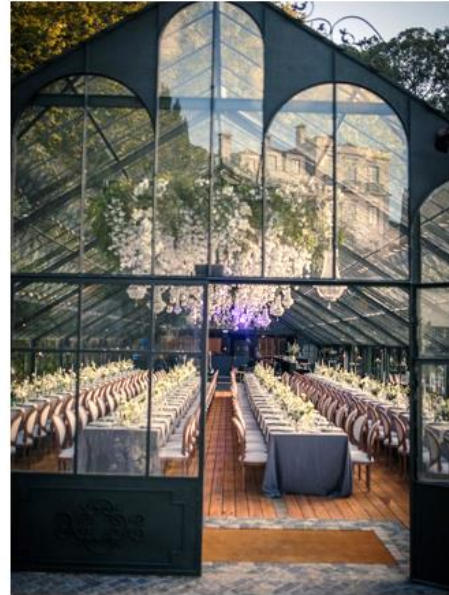
PLEASE NOTE:

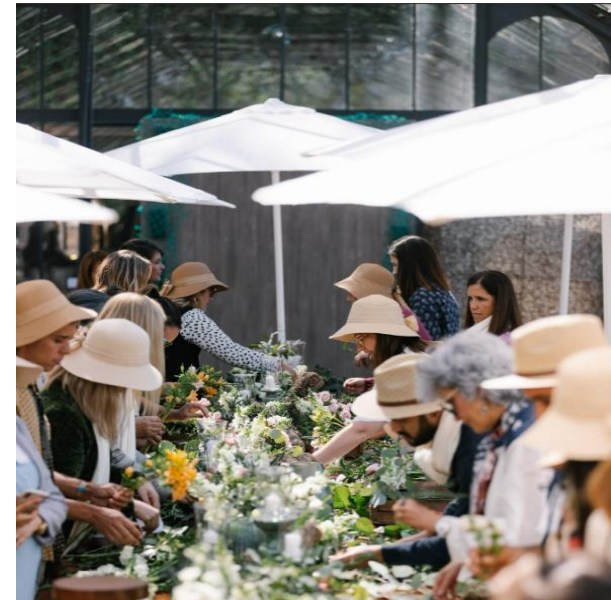
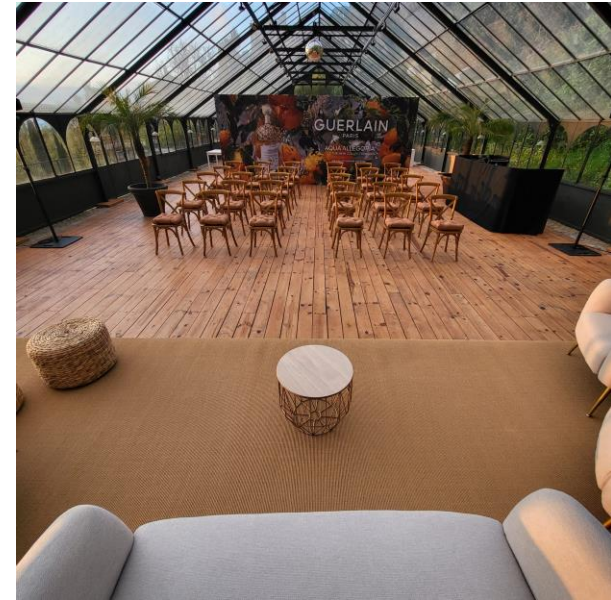
Additional service charges apply for
installation and collection after use - please
enquire.

A professional DJ should operate this
equipment

DJ service not included









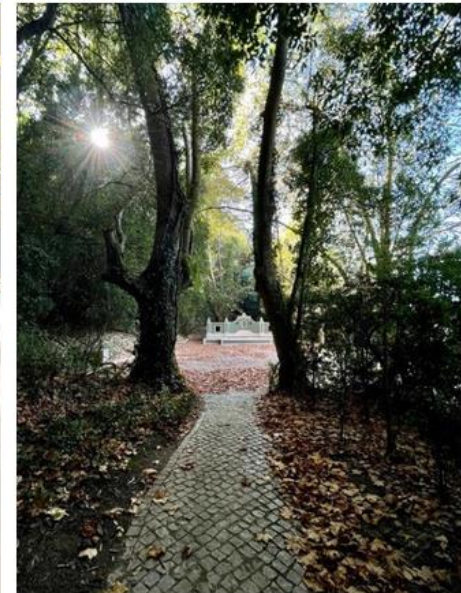
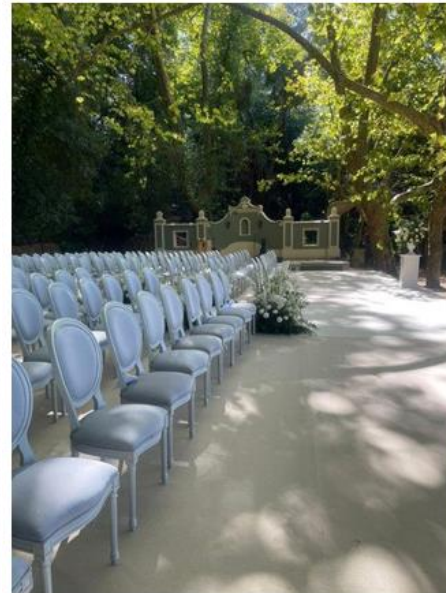
QUINTA DA BELLA VISTA

Sintra

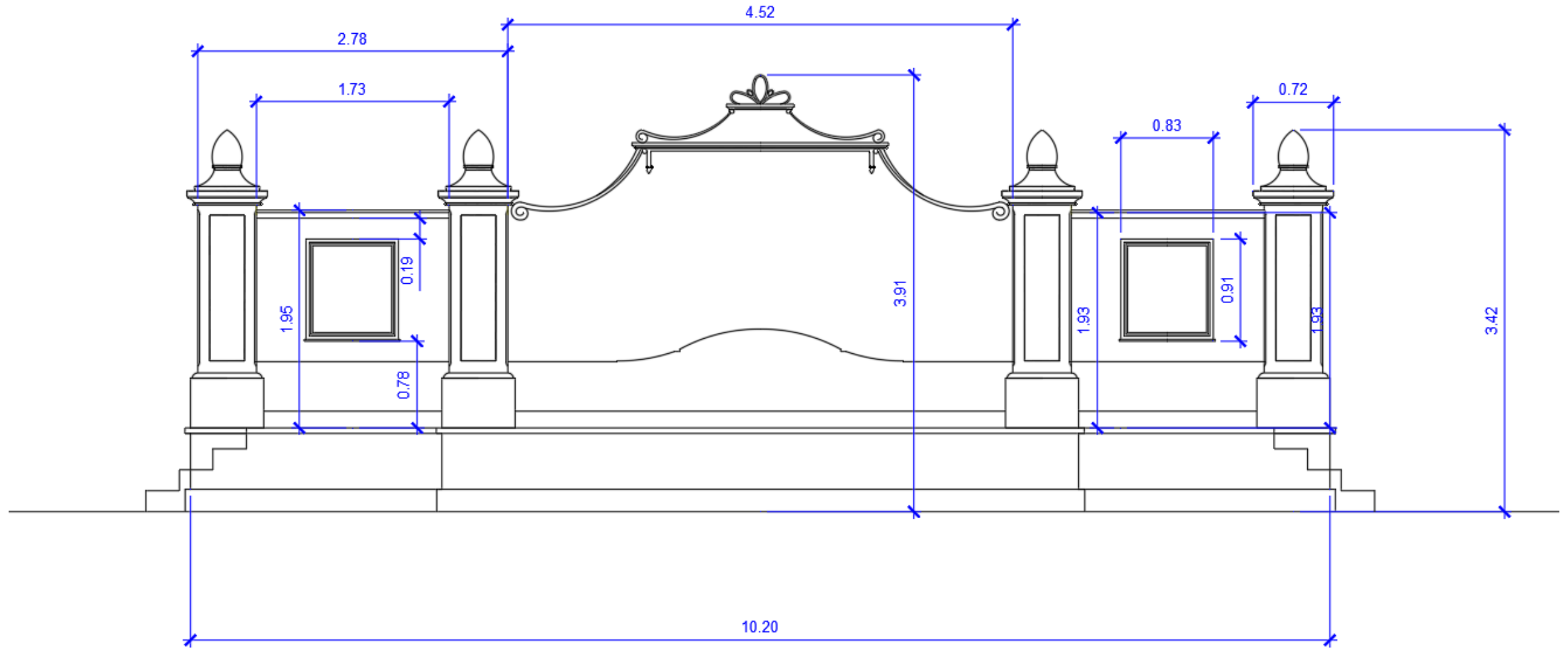
The Bella Vista Theater



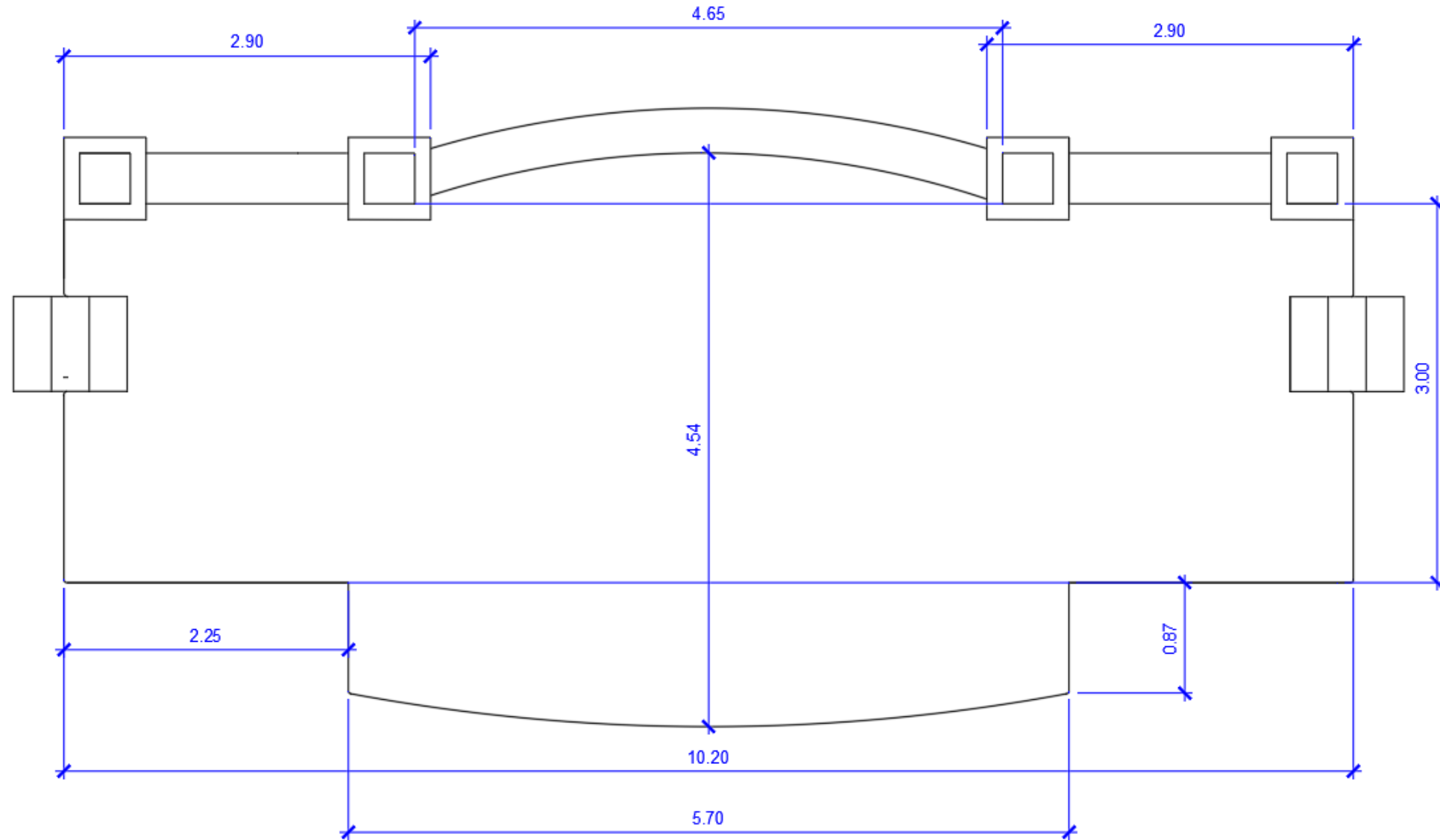




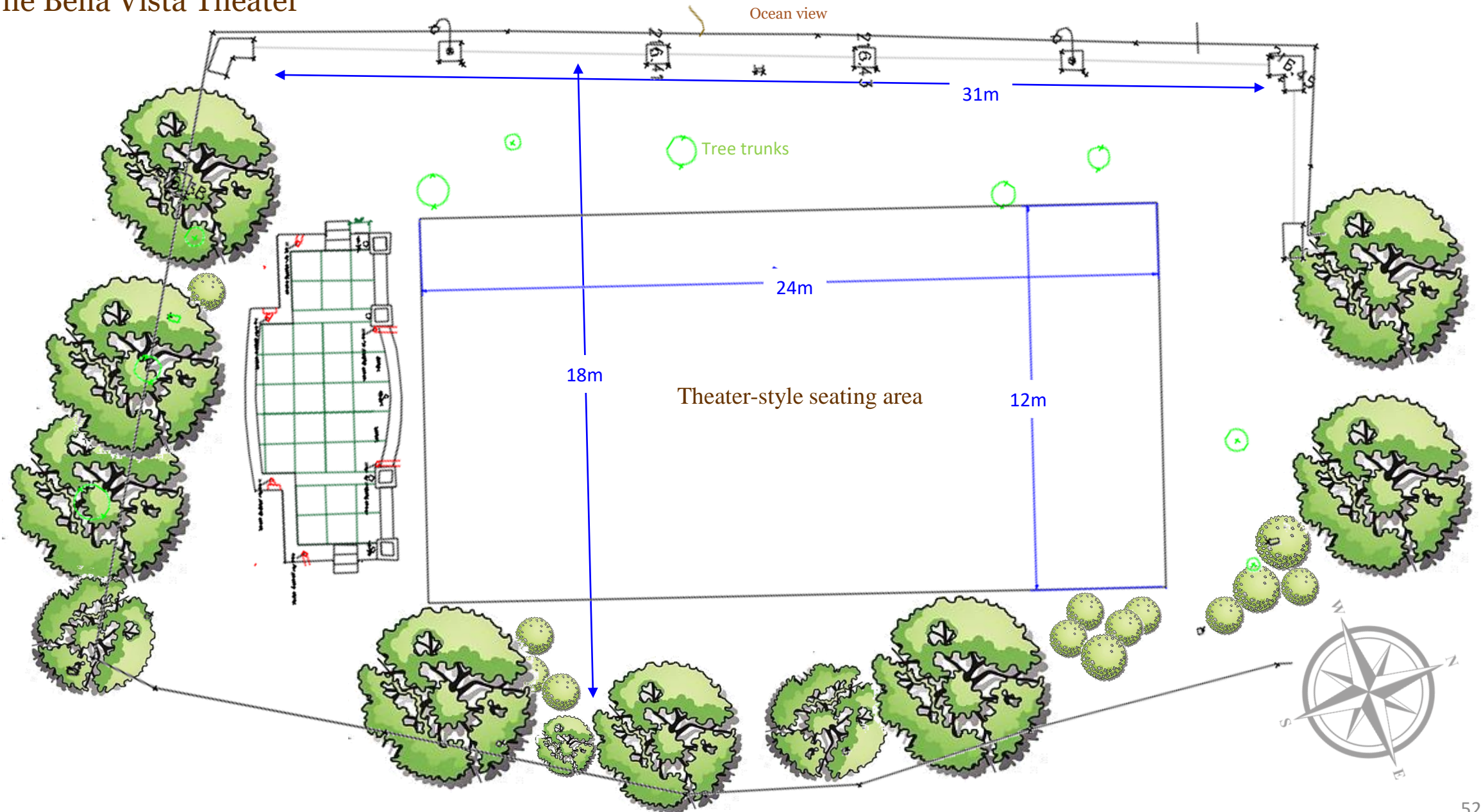
The Bella Vista Theater



The Bella Vista Theater



The Bella Vista Theater





QUINTA DA BELLA VISTA

Sintra

The Lawn & Grand Staircase



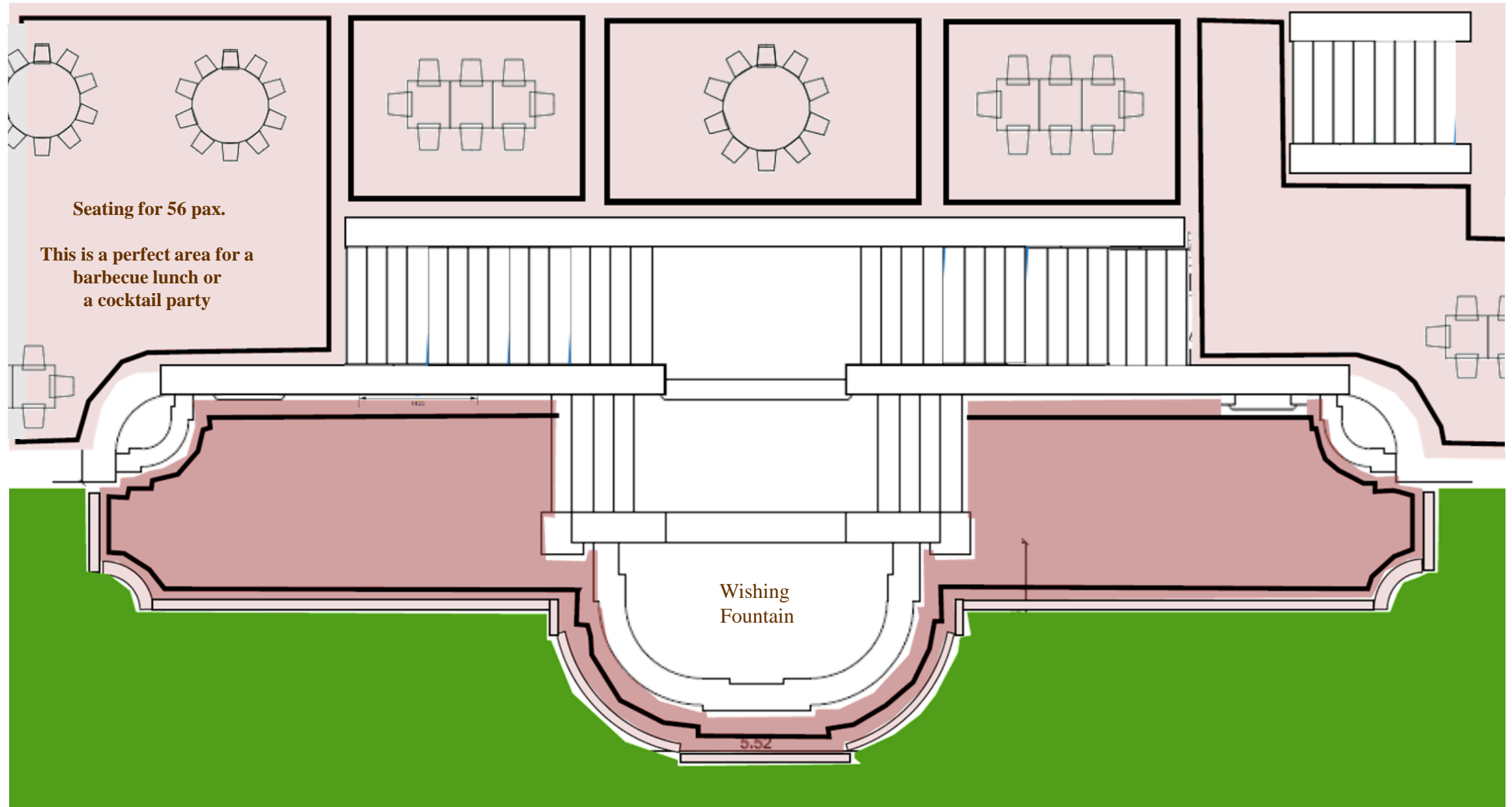




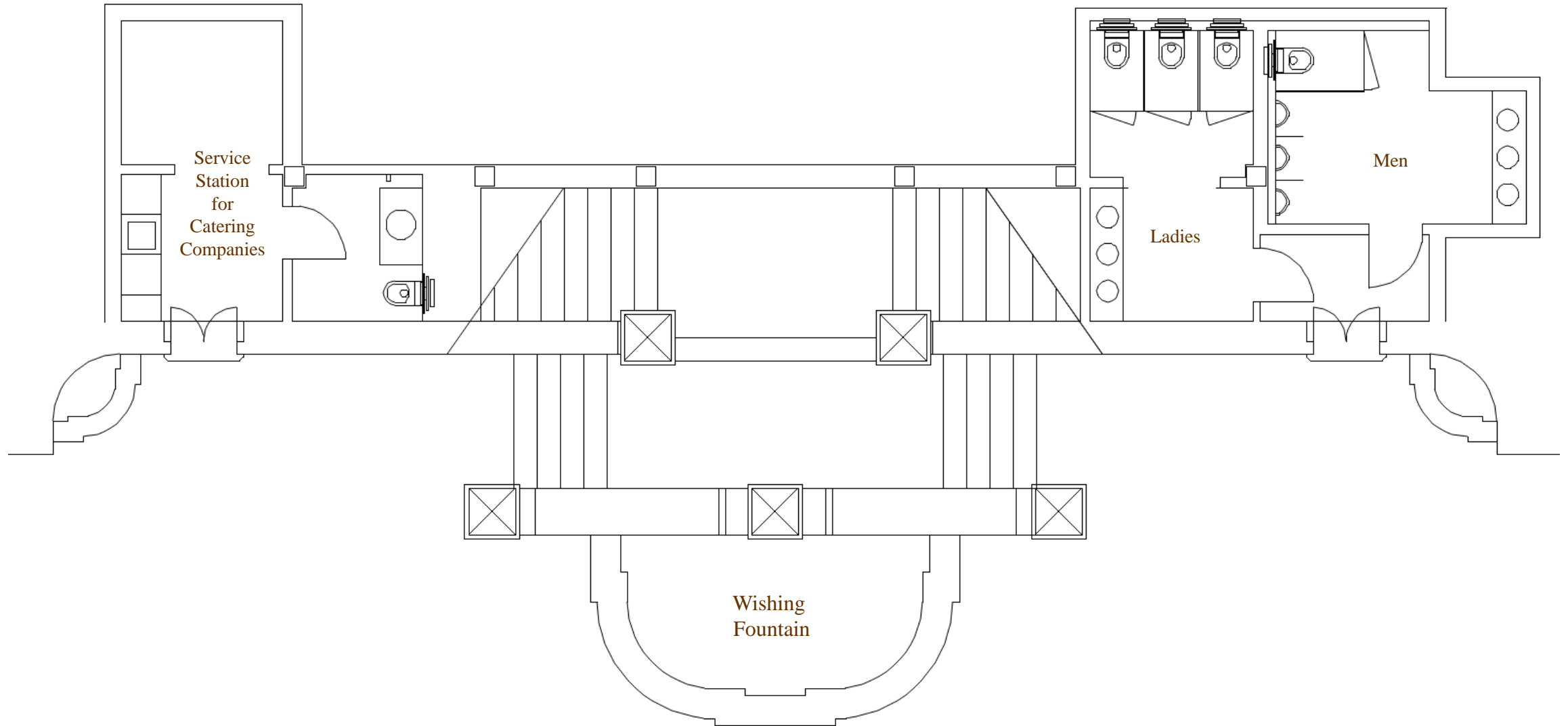




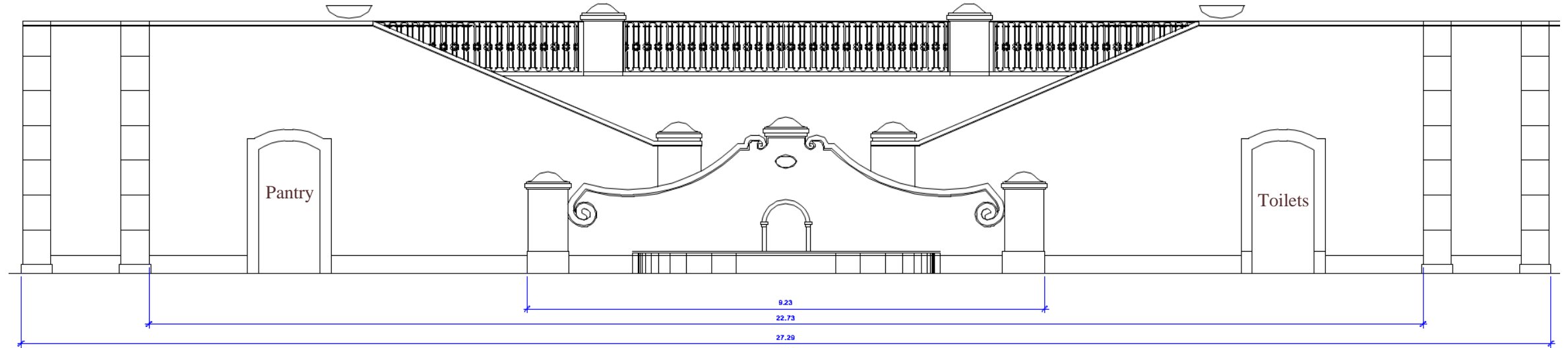
The Lawn Staircase Top Level



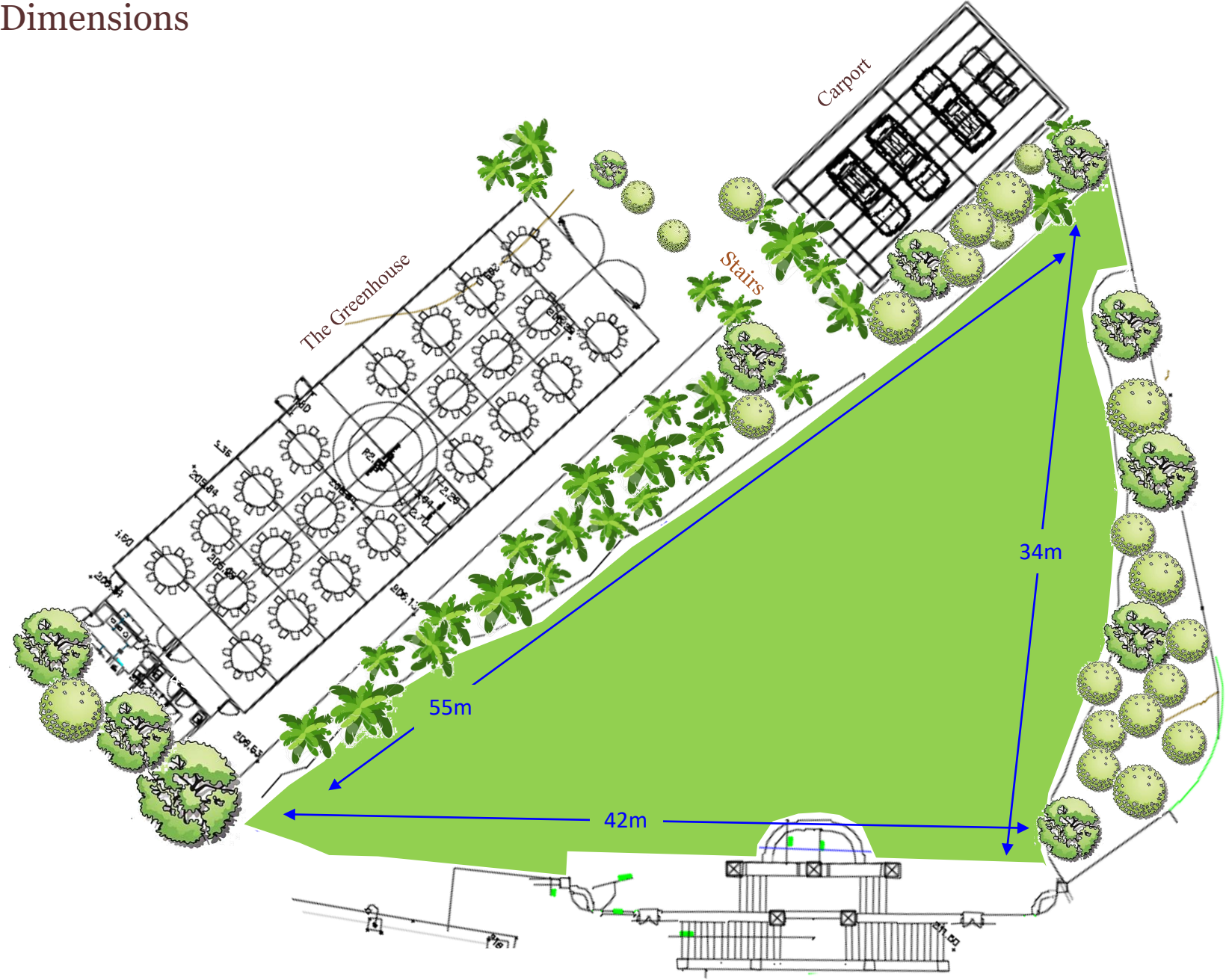
The Lawn Staircase Lower Level



The Lawn Staircase



The Lawn - Dimensions





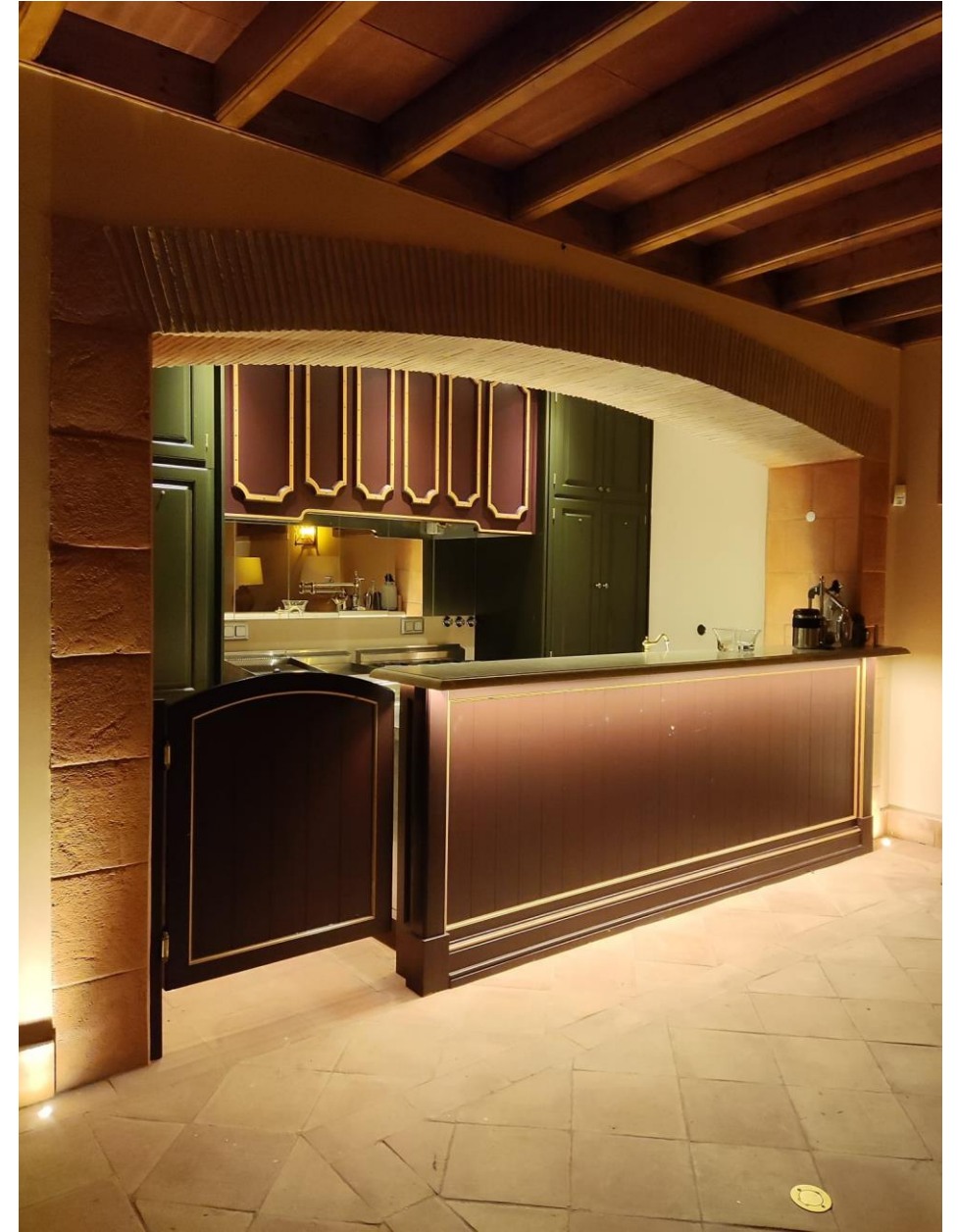
QUINTA DA BELLA VISTA

Sintra

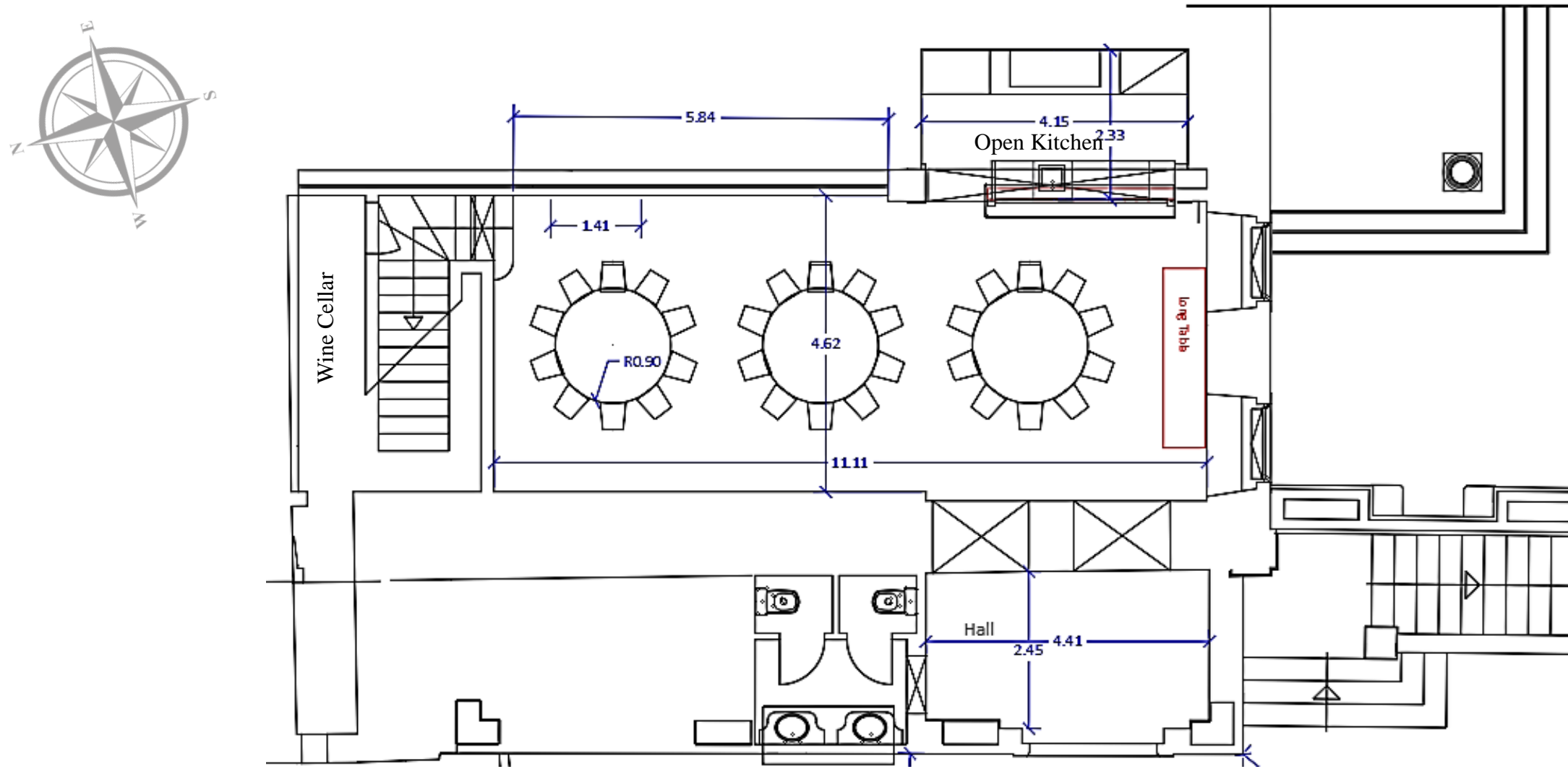
Palacio Adega



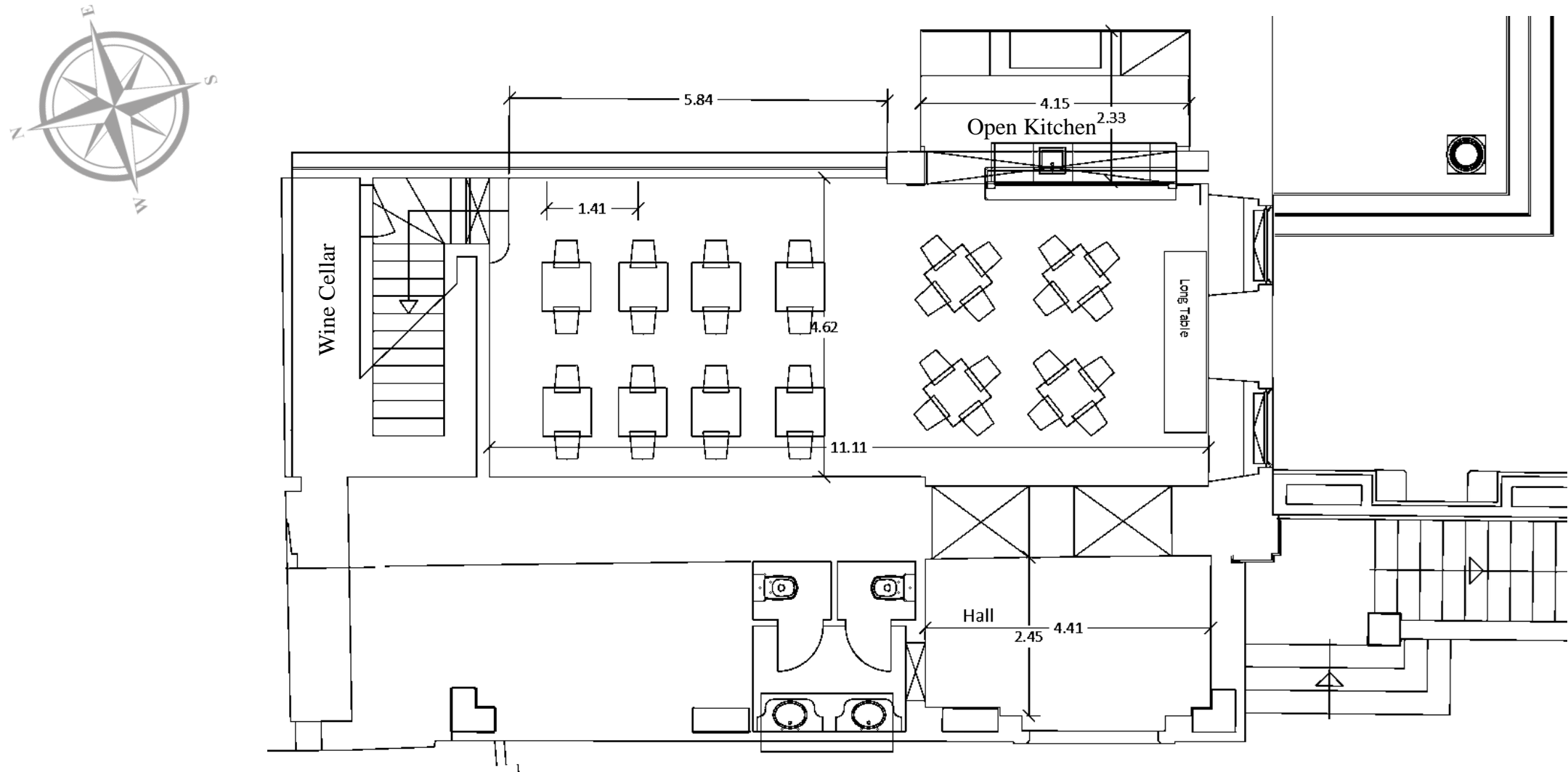




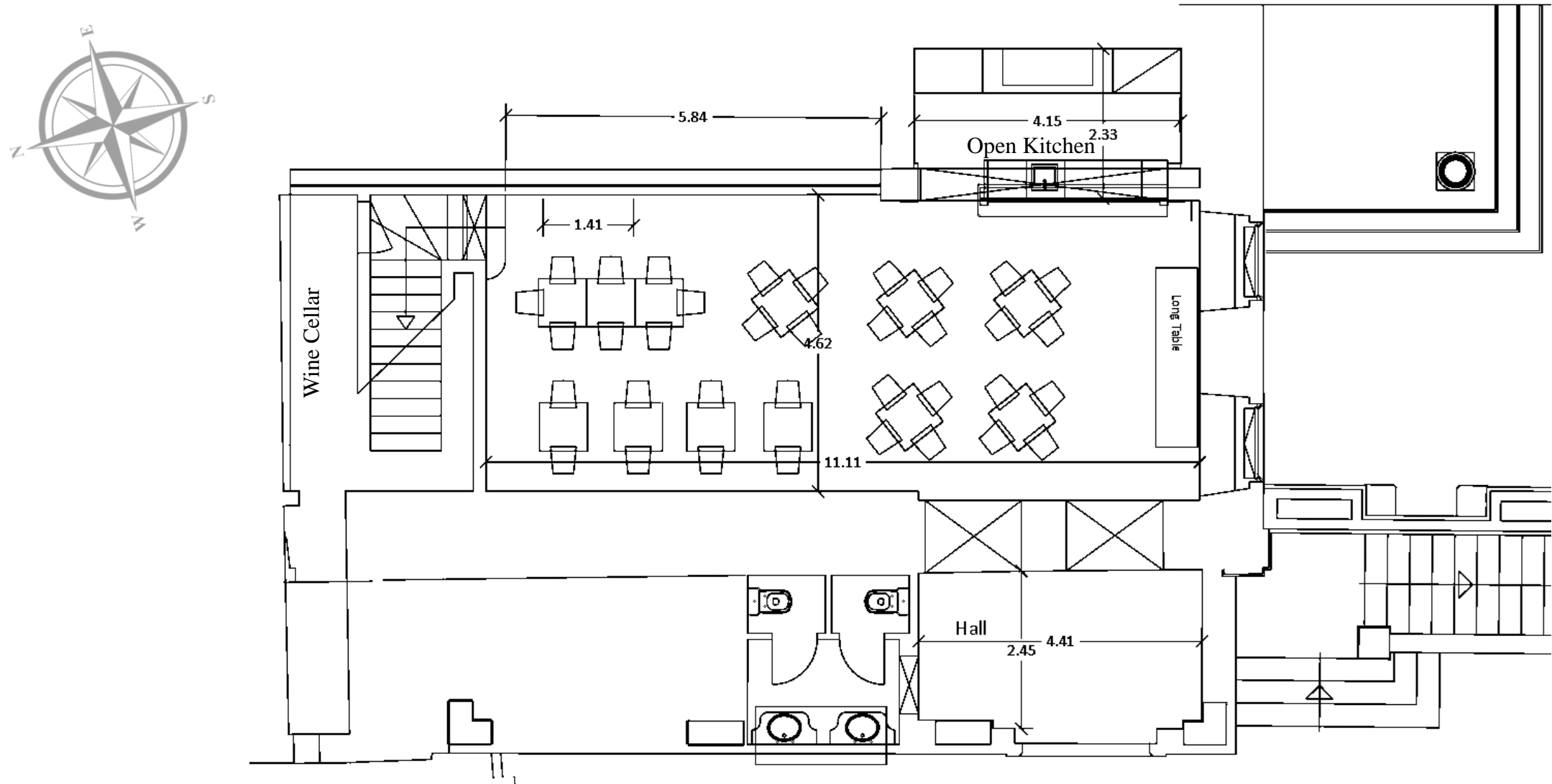
Ground Floor – Adega (capacity 30 persons)



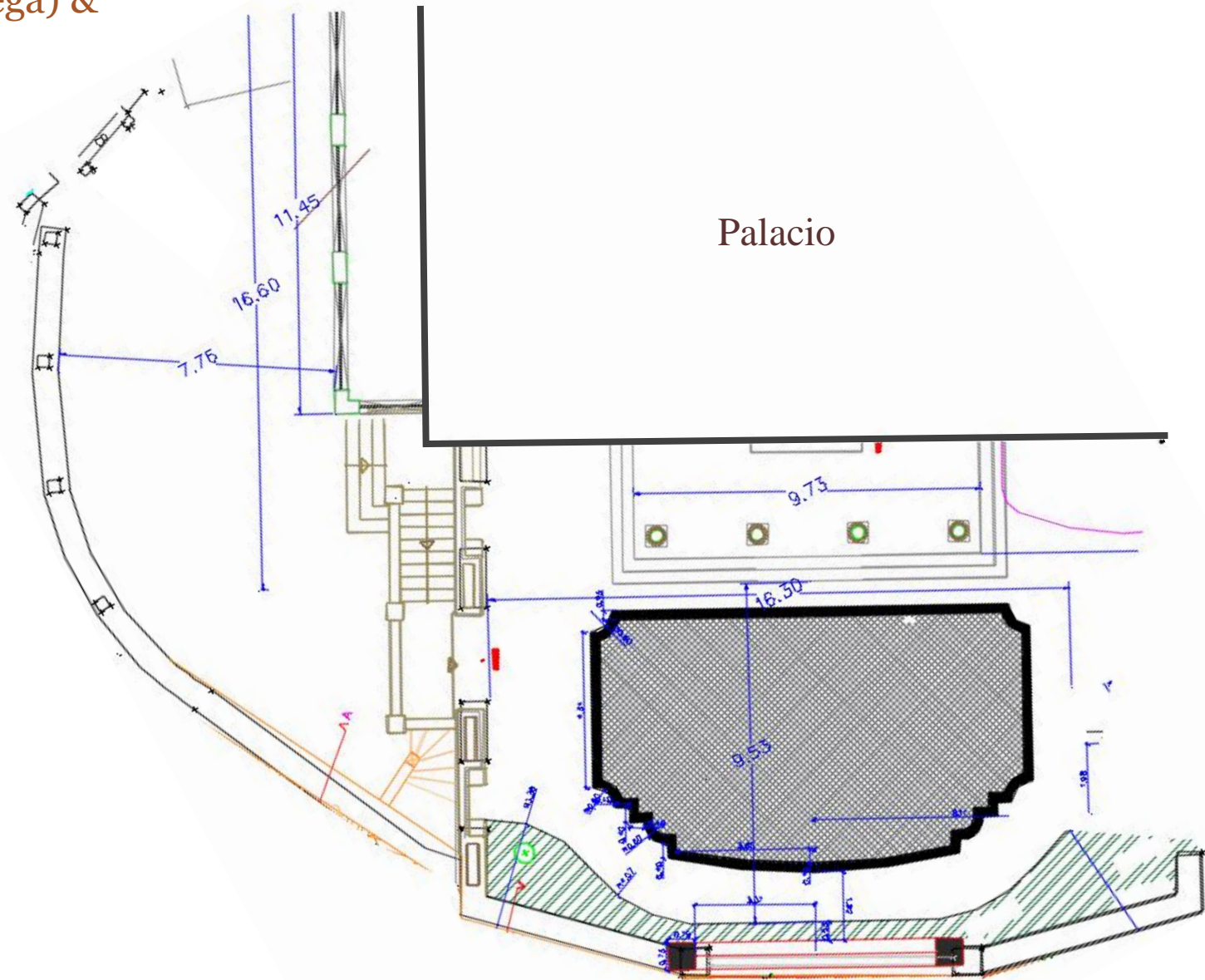
Ground Floor – Adega (breakfast capacity 32 persons)



Ground Floor – Adega (Fado night capacity 36 persons)



Panorama Terrace (outside Adega) & Reception Driveway Square





QUINTA DA BELLA VISTA
Sintra

Palacio Pool

















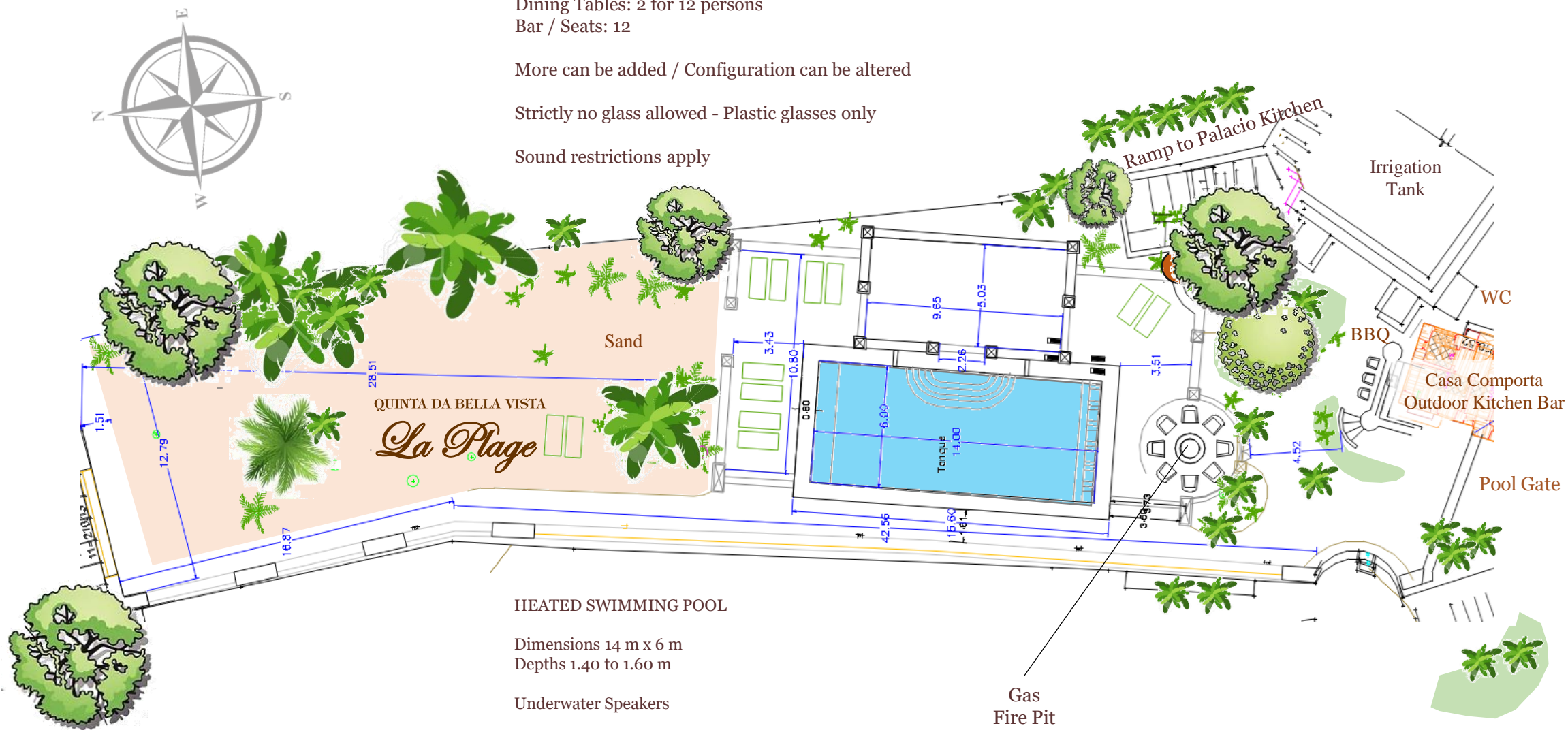
The Palace Pool

Sun Loungers: 10
Adirondack Chairs around Fire Pit: 6
Dining Tables: 2 for 12 persons
Bar / Seats: 12

More can be added / Configuration can be altered

Strictly no glass allowed - Plastic glasses only

Sound restrictions apply



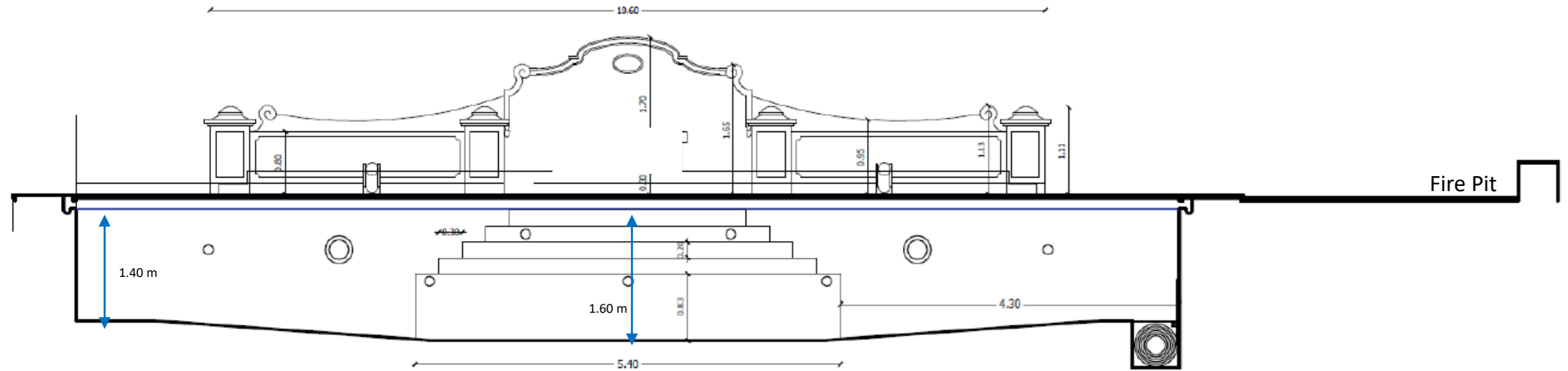
HEATED SWIMMING POOL

Dimensions 14 m x 6 m
Depths 1.40 to 1.60 m

Underwater Speakers

Gas
Fire Pit

The Palace Pool





QUINTA DA BELLA VISTA

Sintra

The Villas Pool

Dining Capacity 48 Pax



QUINTA DA BELLA VISTA

The Villas Pool Area

This area can host an evening event. Our outdoor sound system provides for a selection of music to fill the background while our uplights illuminate the chestnut tree gracing the terrace overlooking the pool. Here, we have hosted some wonderfully elegant evenings.





QUINTA DA BELLA VISTA

The Villas Pool Area

Next to the pool, there is a gas- fired barbeque where a dinner for up to forty-eight people can be hosted in four rotundas of 1.83 m diameter, with 12 persons each.





QUINTA DA BELLA VISTA

The Villas Pool

The 11 m x 5.50 m pool is where you and your close friends will spend the day before and after the wedding. Sun-drenched all day, filled with our own spring water, and with a running spring re-filling the water, heated by solar panels, and with underwater speakers, you will enjoy every minute of it!









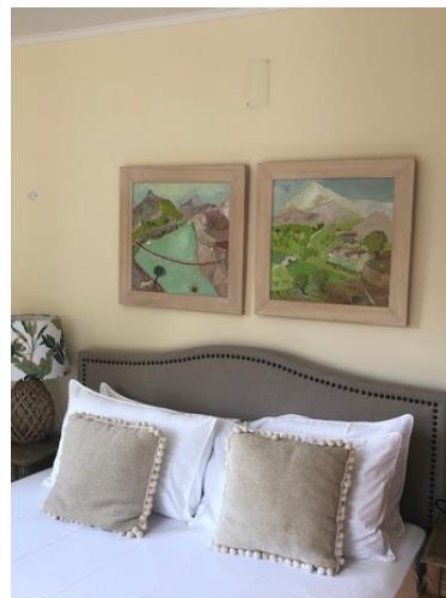














www.QUINTADABELLAVISTA.com

office@quintadabellavista.com

